

# รายวิชาภาษาอังกฤษ

รหัสวิชา อ16101

ชั้นประถมศึกษาปีที่ 6

เรื่อง How Can I Get to  
the Canteen? (1)

ครูผู้สอน อัญชลี สุวรรณบุตร



# How can I get to the canteen? (1)



# "Simon Says" Game



How to play the game:

Follow the instructions given by "Simon" only when the instruction starts with the phrase "**Simon says.**"



"Simon says put your hands on your head."

"Simon says spin around."

"Touch your toes." (Players should not follow this command)

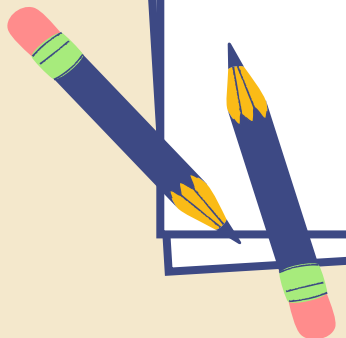
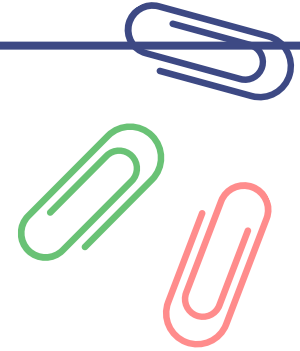
"Simon says hop on one foot."

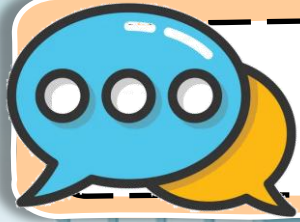
# Objectives



The students can

- pronounce and give the meanings of vocabulary words related to directions.
- ask for and give directions accurately.





## Time to learn; Directions

They are crossing the road.

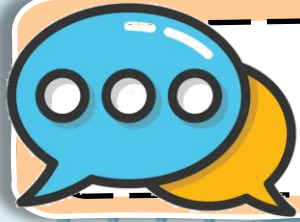


at the **corner** of

**go** past

cross

**go** straight ahead



## Time to learn; Directions

A woman is going past the hospital.

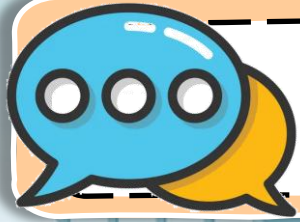


at the **corner** of

**go past**

cross

**go straight ahead**



## Time to learn; Directions

He stands at the corner of the street.



at the **corner of**

go past

cross

go **straight ahead**



## Time to learn; Directions



Henry goes straight ahead.

He walks along the street.



## Time to review; Directions



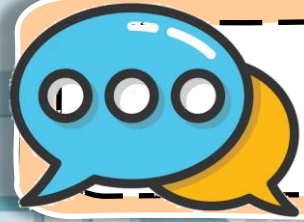
cross

walk along

go past

at the corner of

go straight ahead



# Time to learn; Giving Directions



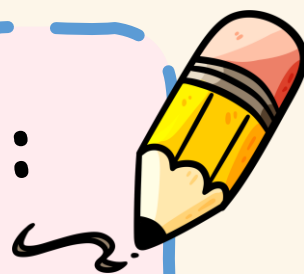
Excuse me, how can I get to the canteen?

Go straight ahead, then go past the English lab.

It's at the corner of the street.

# Worksheet 17 :

## Name the Places



### Instructions:

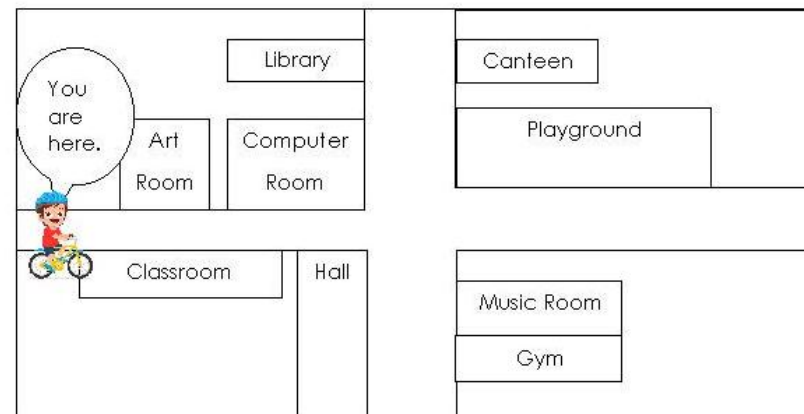
Look at the school map, then read the given directions below and names the places.

### Part A: Name the places.

**Instructions:** Look at the school map, then read the given directions below and names the places.

คำสั่ง: ดูแผนผังโรงเรียนและอ่านการบอกทางด้านล่างแล้วเขียนชื่อสถานที่

#### SCHOOL MAP



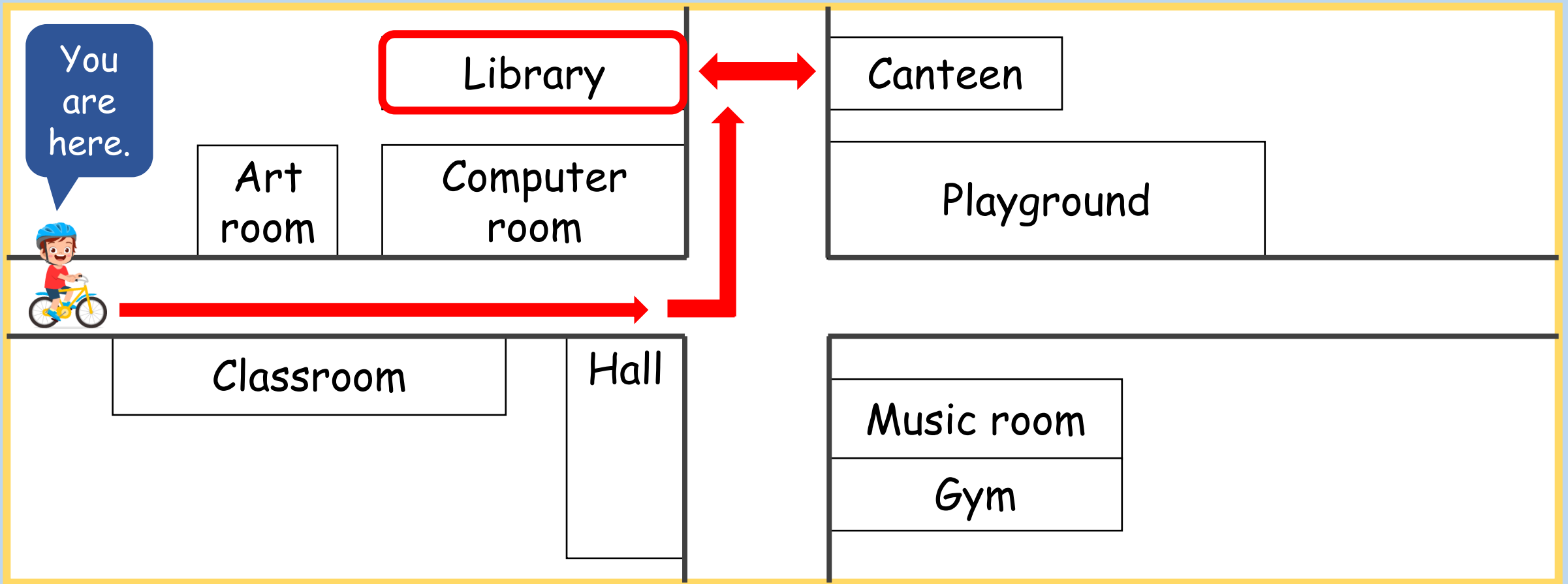
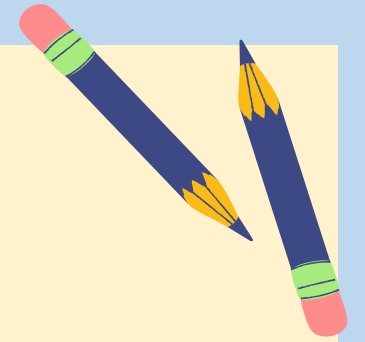
#### Part A: Name the places.

1. Walk along the road. Turn left. It's on the left, opposite the canteen.  
.....
2. Walk along the road. Turn right. It's on the corner. ....
3. Go straight on. It's on your right, near the hall. ....
4. Walk along the road. Turn right. It's on the left, next to the gym.  
.....
5. Walk along the road. Turn left. It's on the right, opposite the computer room.  
.....

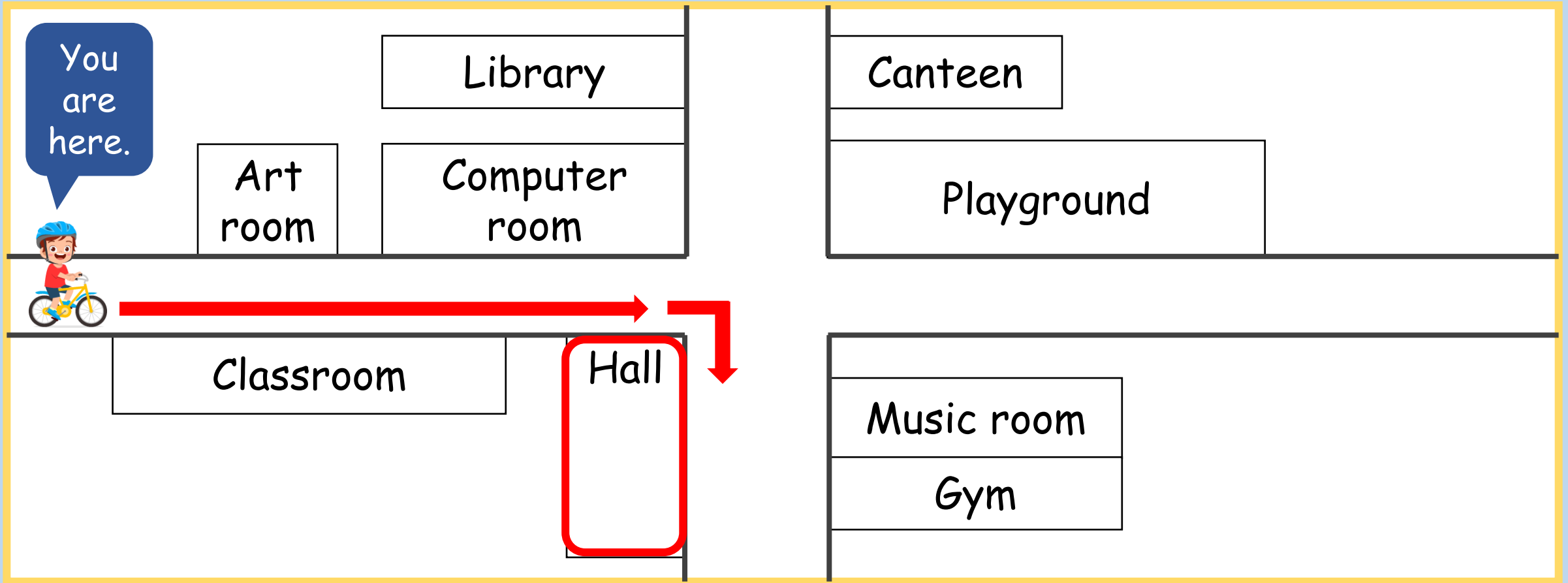
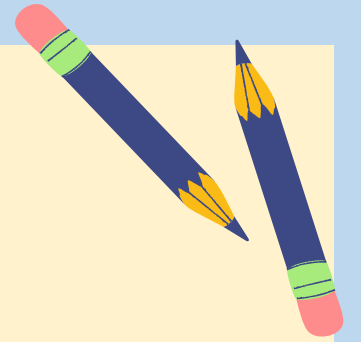
#### Part B: Look at the map above. Then ask and answer with your partner.

- A: Excuse me, where is the .....?  
B: It's .....  
A: How can I get to the .....?  
B: You can .....

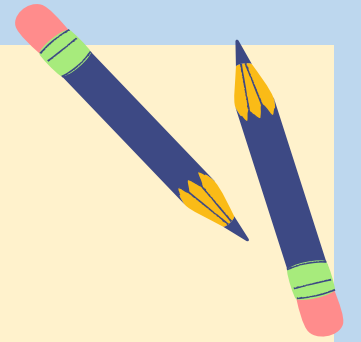
1. Walk along the road. Turn left. It's on the left, opposite the canteen. ....**The library.**.....



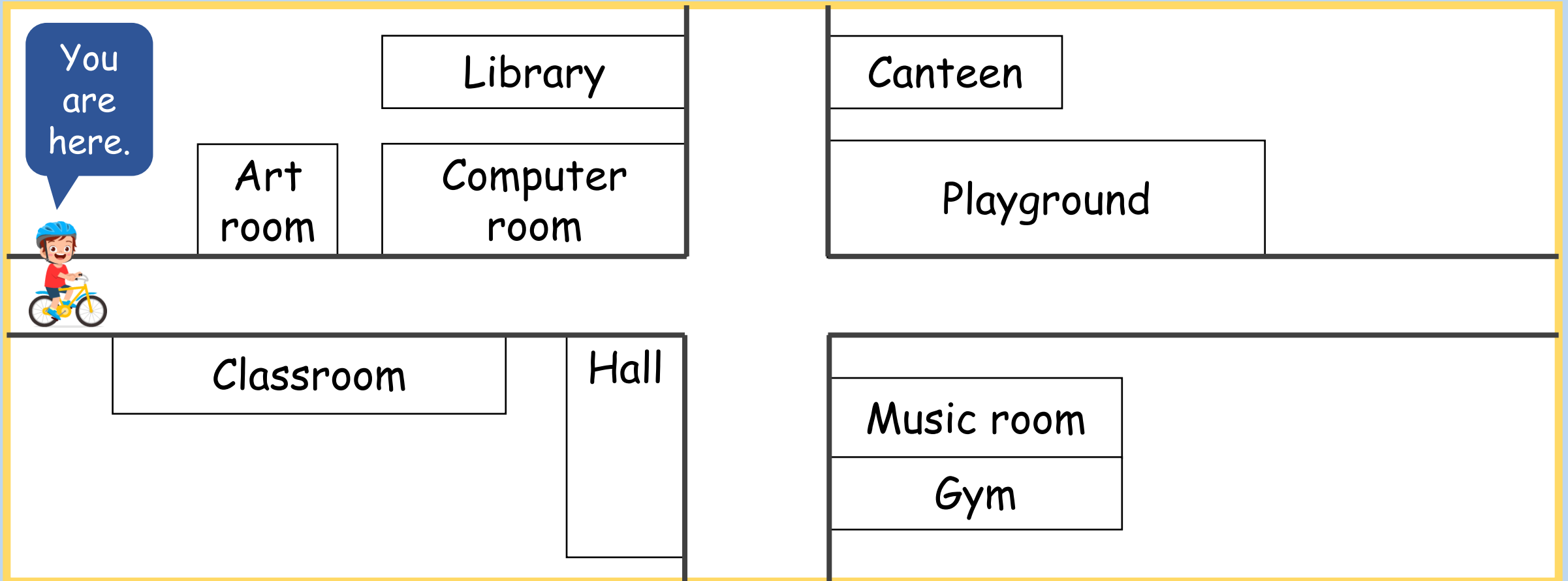
2. Walk along the road. Turn right. It's at the corner. ....The hall.....



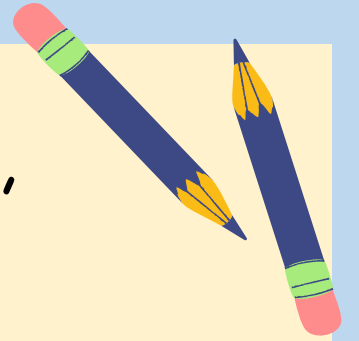
3. Go straight on. It's on your right, near the hall.



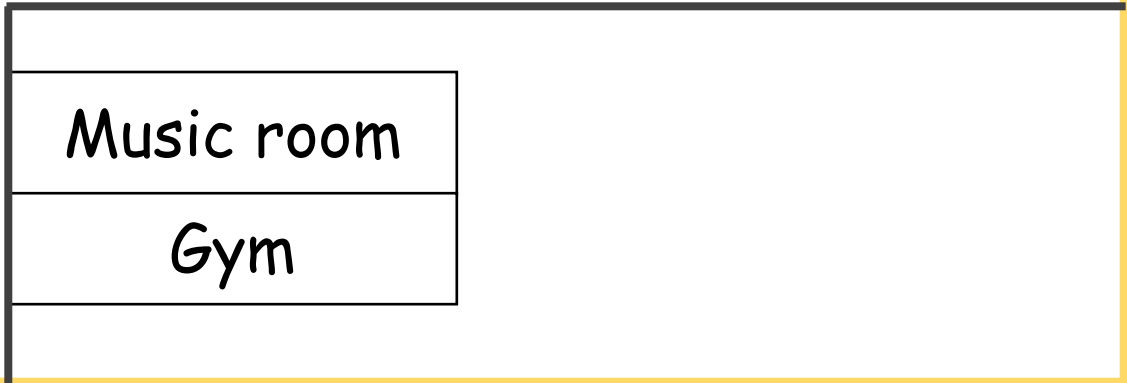
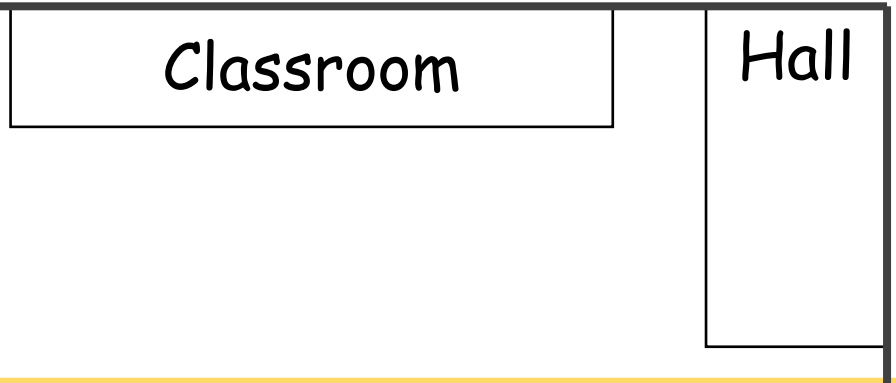
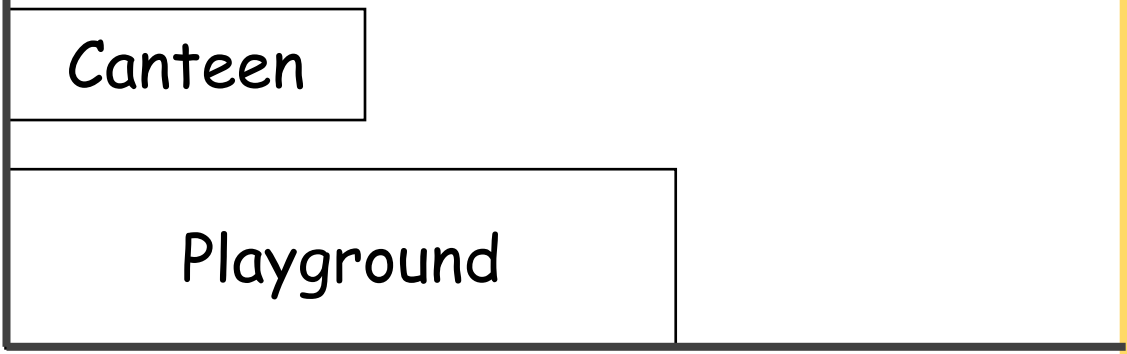
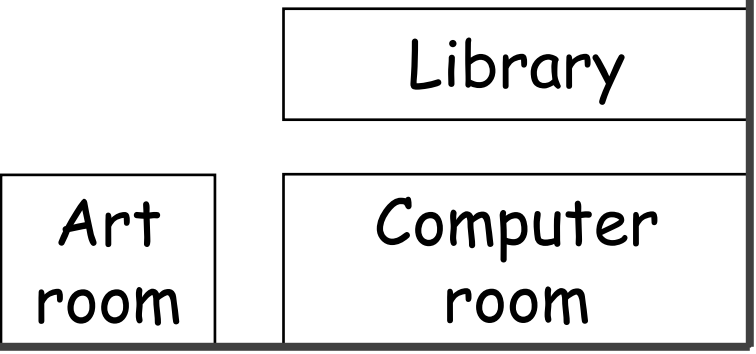
.....



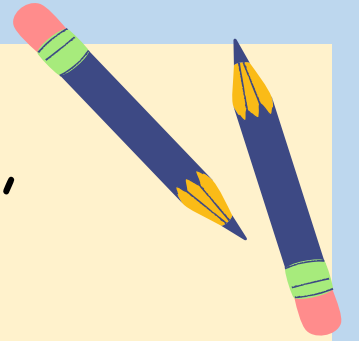
4. Walk along the road. Turn right. It's on the left, next to the gym. ....



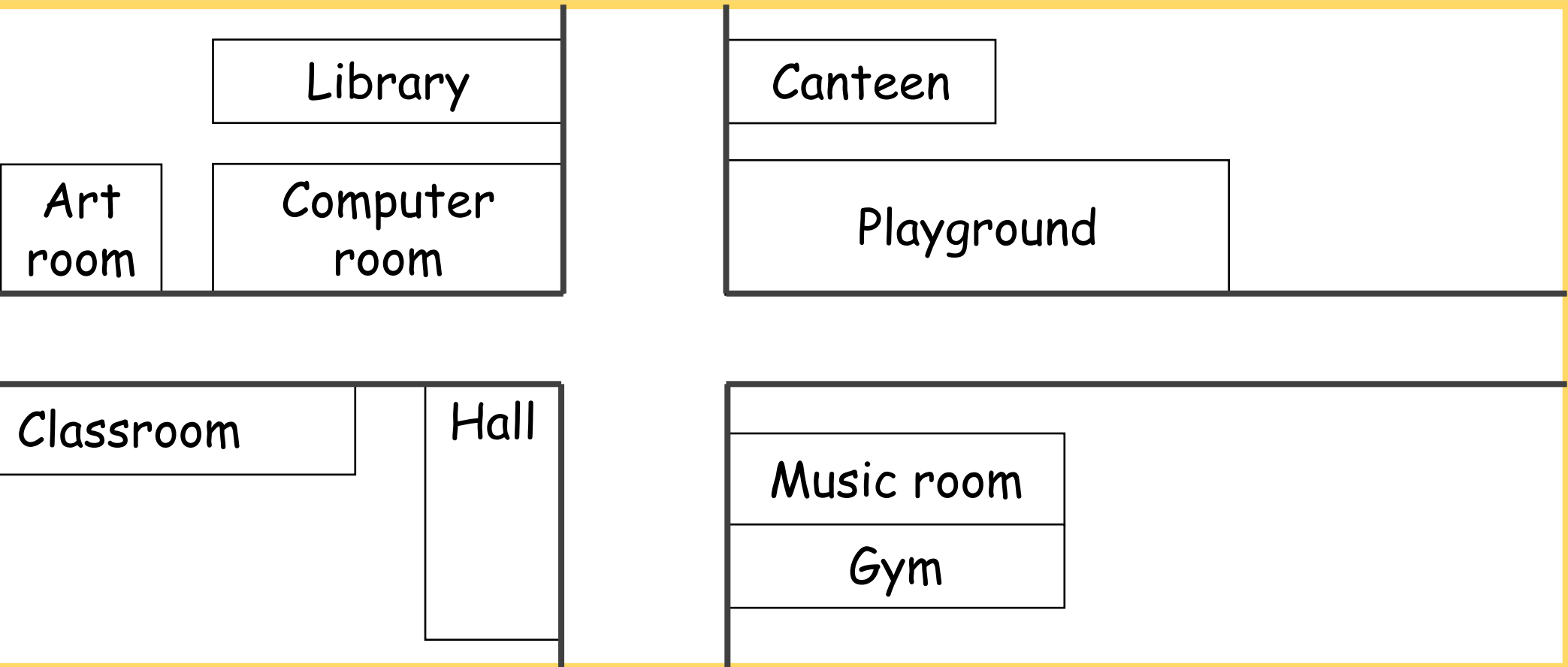
You are here.



5. Walk along the road. Turn left. It's on the right, opposite the computer room. ....



You are here.

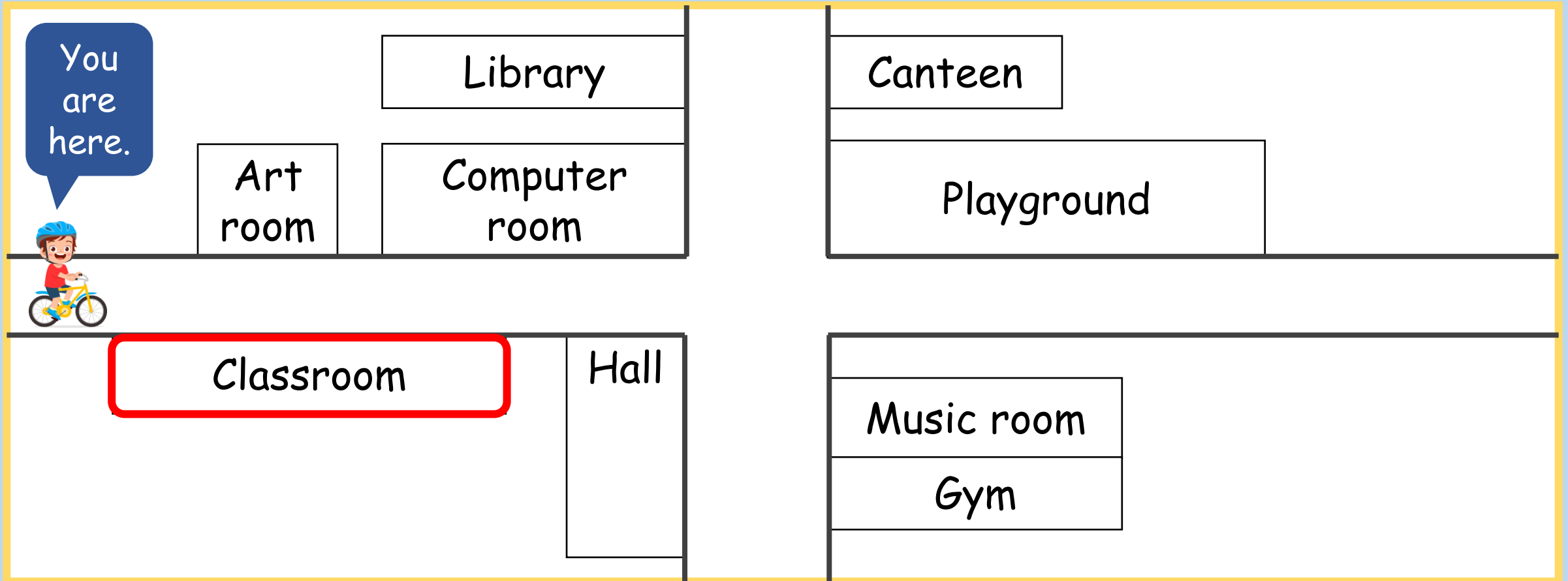
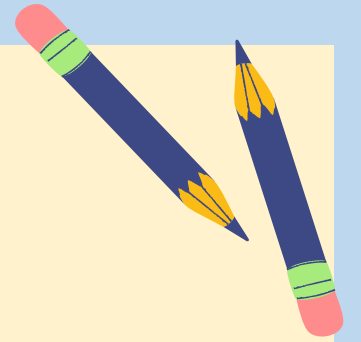


Let's check  
the answers!

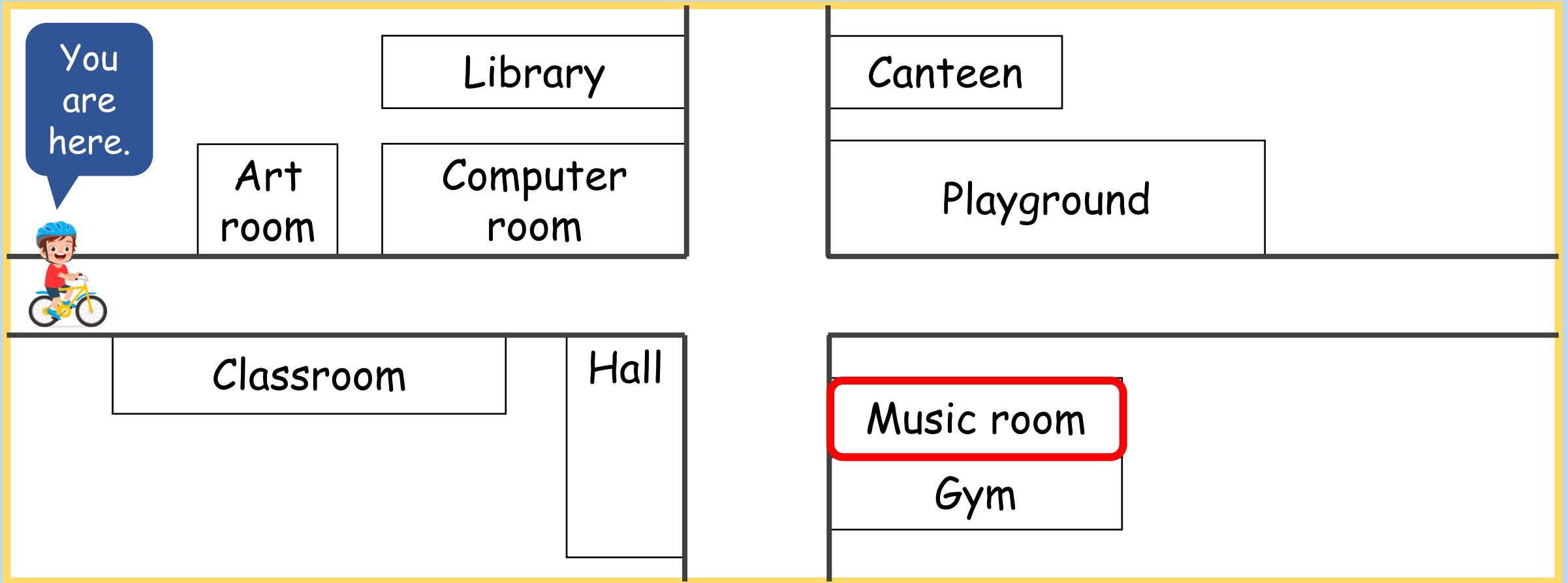
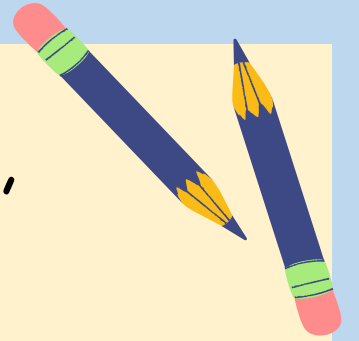


3. Go straight on. It's on your right, near the hall.

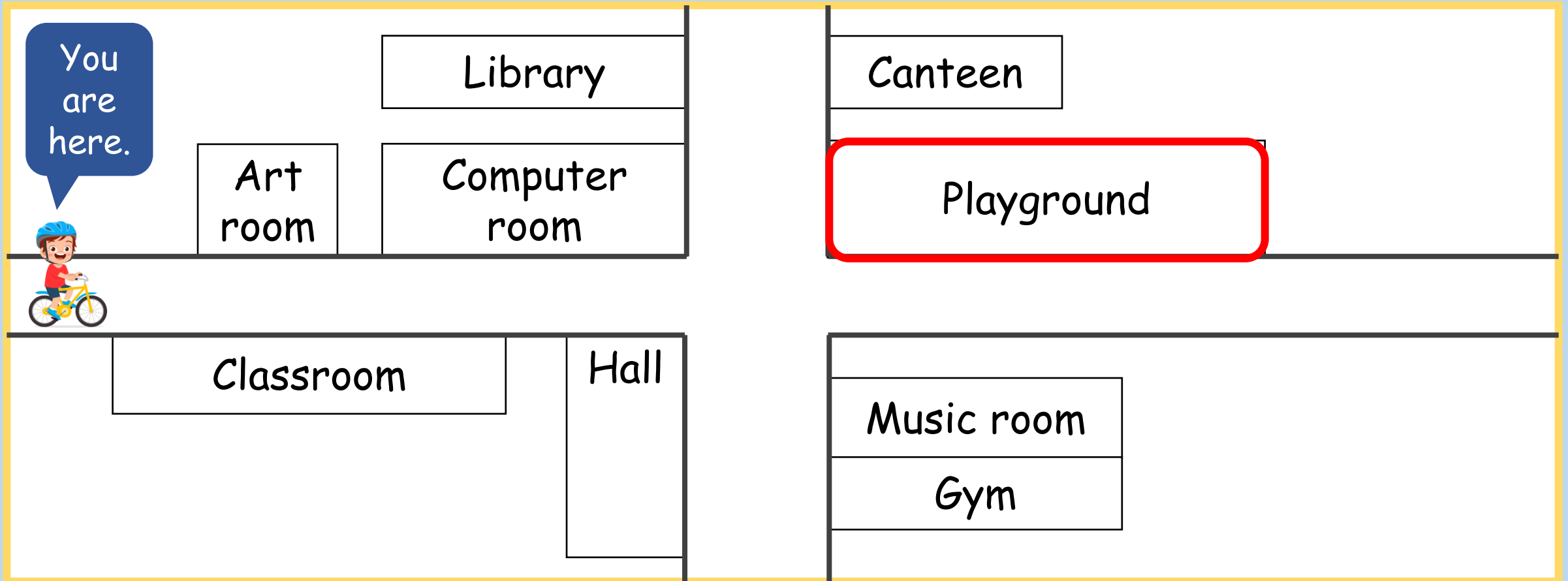
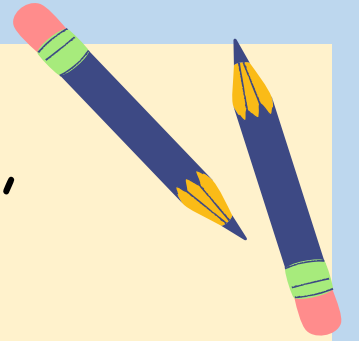
The classroom...



4. Walk along the road. Turn right. It's on the left,  
next to the gym. **The music room.**.....

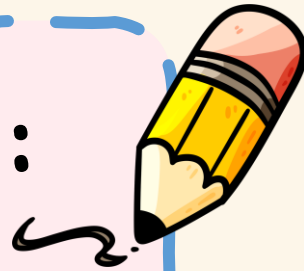


5. Walk along the road. Turn left. It's on the right, opposite the computer room. ...The playground.....



# Worksheet 17 :

## Name the Places



### Instructions:

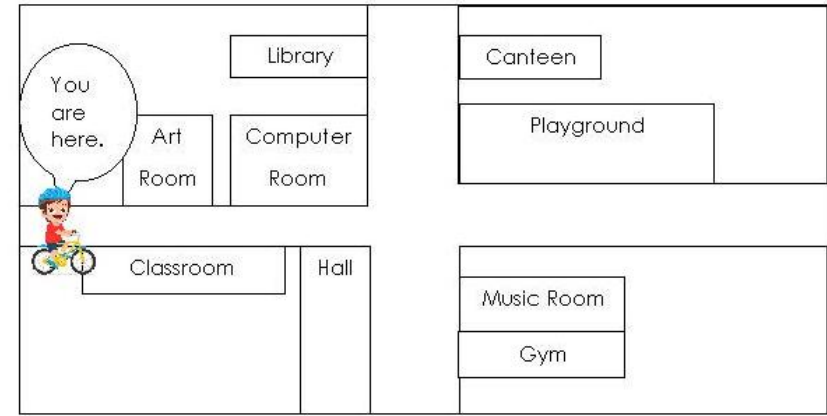
Look at the school map, then read the given directions below and names the places.

Part B: Look at the map above. Then ask and answer with your partner.

**Instructions:** Look at the school map, then read the given directions below and names the places.

คำสั่ง: ดูแผนผังโรงเรียนและอ่านการบอกทางด้านล่างแล้วเขียนชื่อสถานที่

### SCHOOL MAP

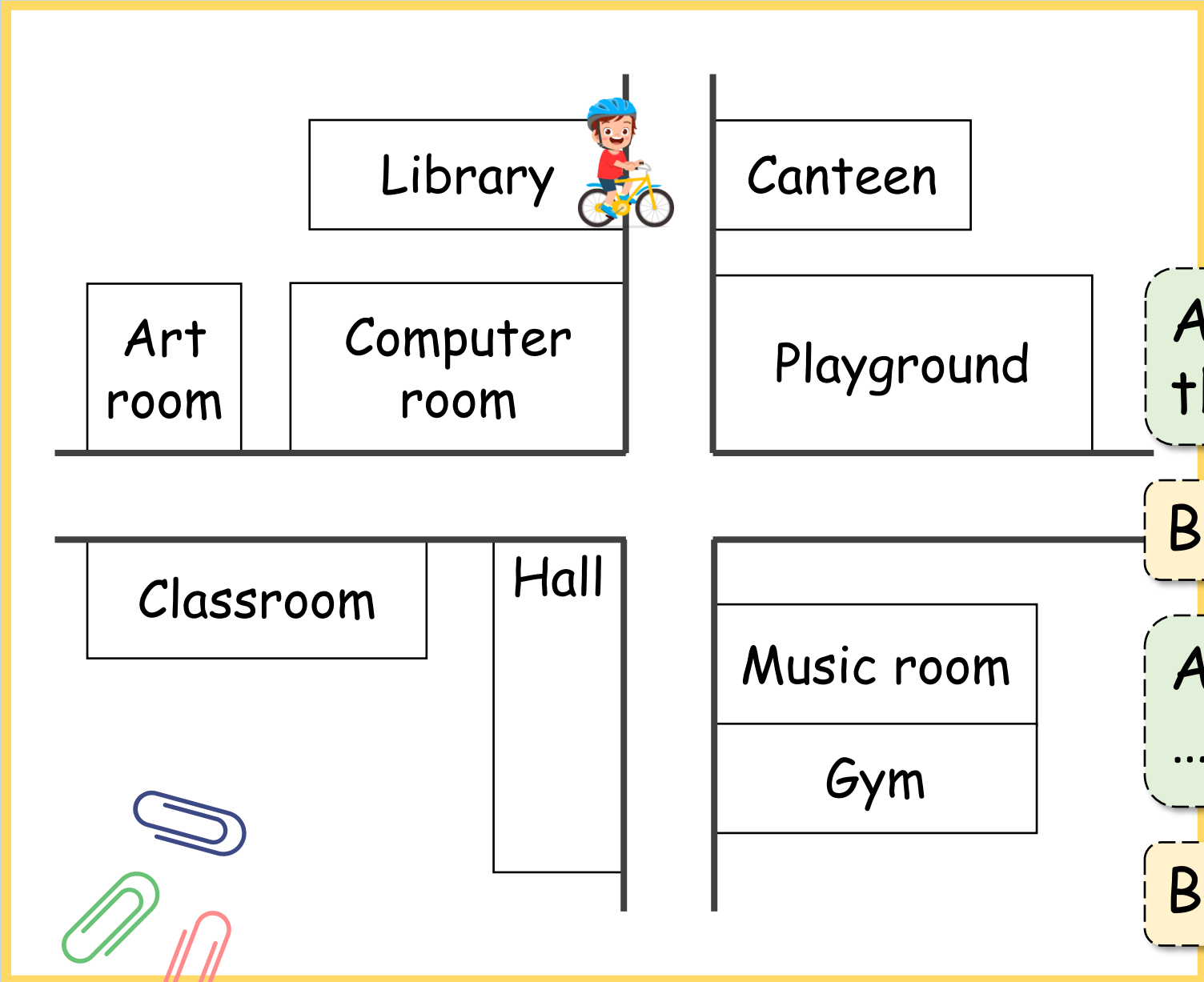


#### Part A: Name the places.

1. Walk along the road. Turn left. It's on the left, opposite the canteen.  
.....
2. Walk along the road. Turn right. It's on the corner. ....
3. Go straight on. It's on your right, near the hall. ....
4. Walk along the road. Turn right. It's on the left, next to the gym.  
.....
5. Walk along the road. Turn left. It's on the right, opposite the computer room.

#### Part B: Look at the map above. Then ask and answer with your partner.

- A: Excuse me, where is the .....?
- B: It's .....
- A: How can I get to the .....?
- B: You can .....



A: Excuse me, where is the .....

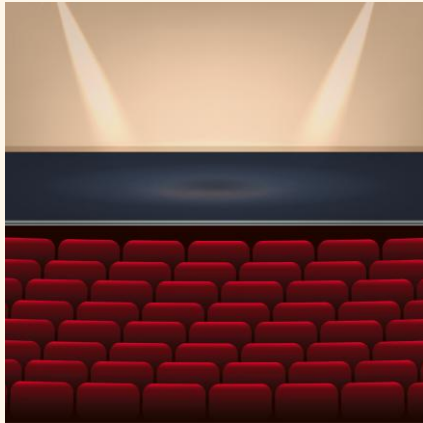
B: It's .....

A: How can I get to the .....

B: You can .....

# Speaking Time!







## บทเรียนครั้งต่อไป

# How Can I Get to the Canteen? (2)

## สิ่งที่ต้องเตรียม

1. ใบงานที่ 18 เรื่อง How Can I Get There?
2. แบบประเมินตนเอง
3. แบบบันทึกการเรียนรู้ (Learning Log)

สามารถดาวน์โหลดได้ที่ [www.dltv.ac.th](http://www.dltv.ac.th)

