

# รายวิชา ภาษาอังกฤษ

รหัสวิชา อ22102 ชั้นมัธยมศึกษาปีที่ 2  
หน่วยการเรียนรู้ที่ 6 World Weather

## เรื่อง Global Warming

ครูผู้สอน ครูสรวรยา อุดรพรหม



## Unit 6 : World Weather

# Global Warming





## จุดประสงค์การเรียนรู้

1. เลือกใช้คำเชื่อมแสดงสาเหตุและผลกระทบได้ถูกต้อง
2. อ่านบทอ่านเกี่ยวกับภาวะโลกร้อนแล้วระบุนายละเอียดได้







**Global warming  
refers to the  
increase in  
Earth's average  
temperature  
due to human  
activities.**

# What do you think **causes** global warming?

## Causes of Global Warming



**Key causes include the burning of fossil fuels and deforestation, which release greenhouse gases.**



# How does it **affect**?

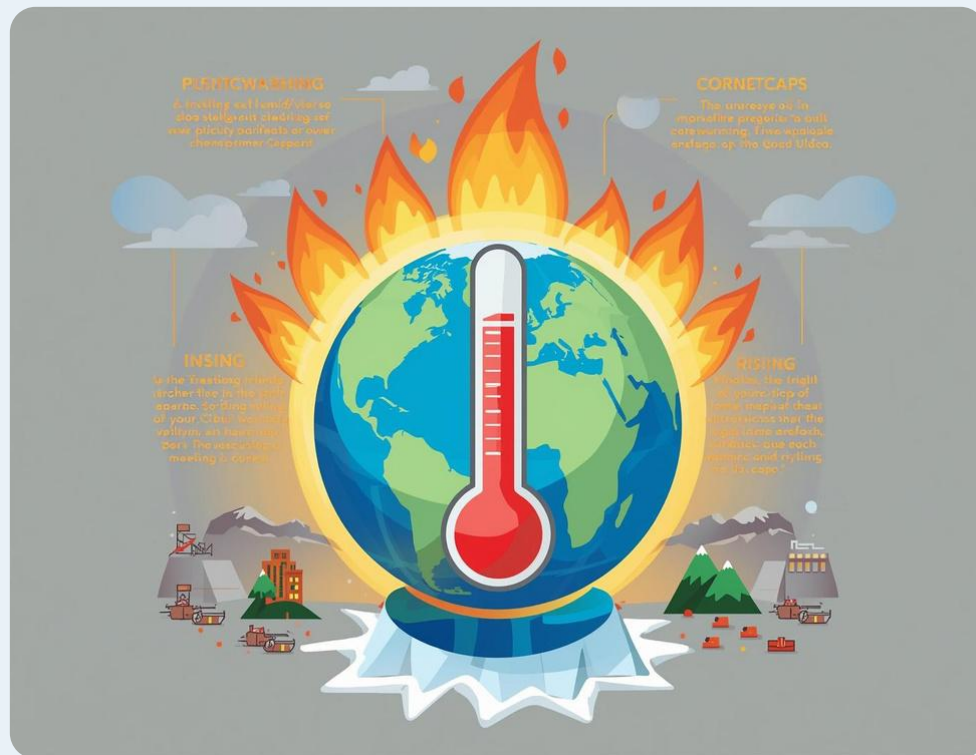
## Effects of Global Warming



**The effects include melting ice caps, rising sea levels, and threatened wildlife habitats worldwide.**

# Global Warming

## What is Global Warming?



## Causes of Global Warming



## Effects of Global Warming





# Vocabulary





# **global warming (n.)**

**a gradual increase in  
the earth's temperature  
generally due**



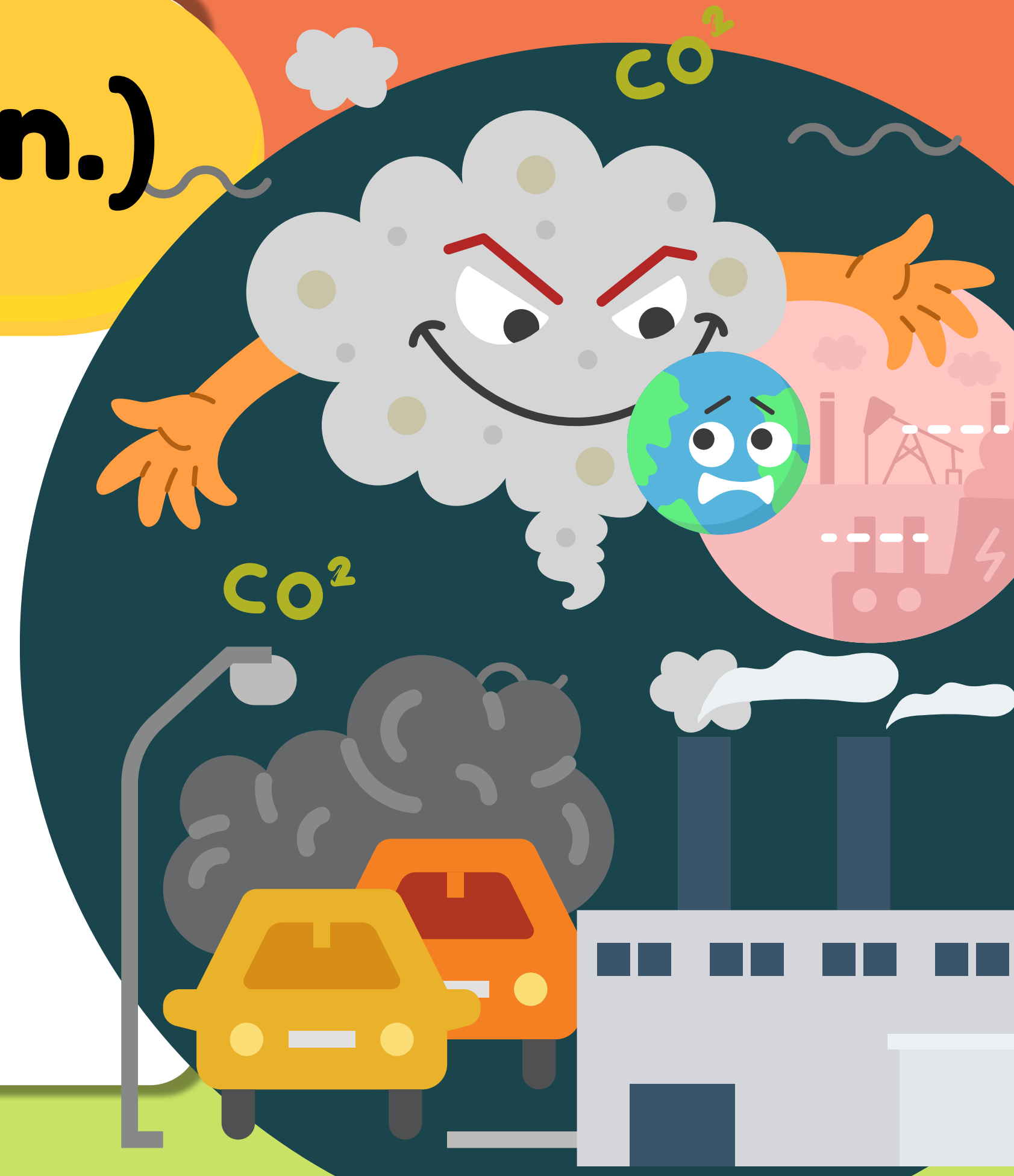
# **temperature (n.)**

**a measure of how hot  
or cold a place**



**greenhouse gas (n.)**

**gases in Earth's  
atmosphere that trap  
heat**





# **fossil fuel (n.)**

**a fuel formed in the earth from plant or animal remains**



# increase (v.)

to become or **make**  
something **larger** or  
greater



# **atmosphere (n.)**

**the whole mass of air  
surrounding the earth**





# endangered (adj.)

(of a species) seriously  
at risk of extinction



# pollution (n.)

the process of **making**  
air, water, soil, etc.  
**dirty**





# deforestation (n.)

the **cutting down** or burning of trees in an area **without replacing** the trees





# habitat (n.)

the **natural home** or  
environment **of an**  
**animal, plant**



# Global Warming







## **Instructions:**

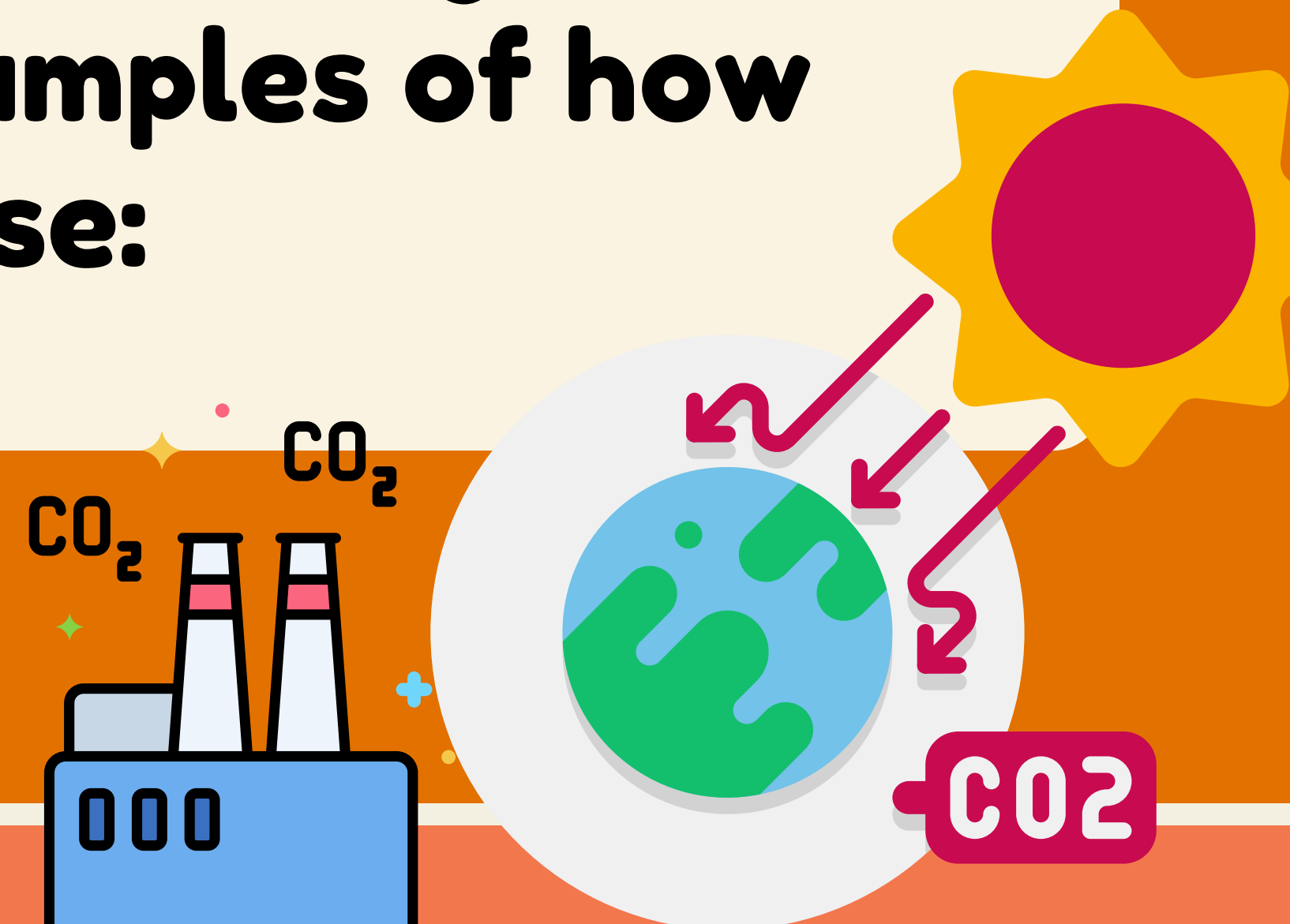
**Read the passage below. For each statement, write T if the statement is TRUE, and write F if the statement is FALSE.**





**Greenhouse gases are the biggest factor to cause global warming. Many of them occur because of human activities, so the earth's temperature is increasing.**

**Here are just a few examples of how humans make this increase:**





**Here are just a few examples of how humans make this increase:**





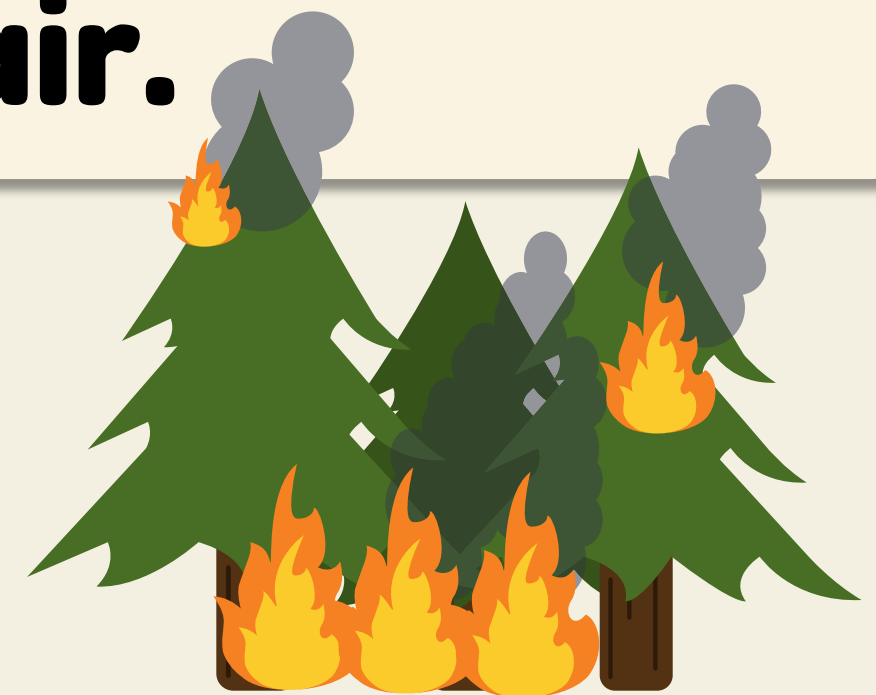
**1. Pollution** – Fossil fuels such as coal, gas and oil are used to make electricity and run cars. These fossil fuels are burnt in power stations, **so** carbon dioxide is released in the air. Carbon dioxide is a greenhouse gas and it's very harmful to the environment.





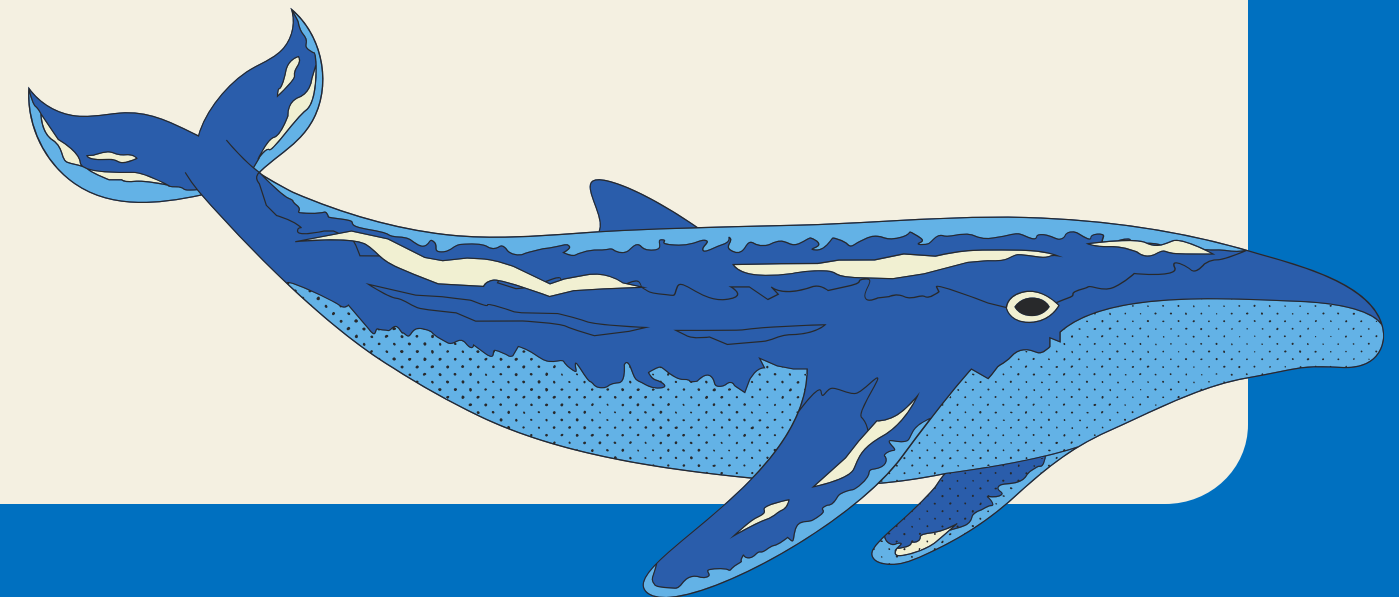


**2. Deforestation** – Huge areas of trees are being cut down **because of** different reasons, such as using the wood for fuel, building houses or factories. This leads to global warming **because** there are fewer trees left to absorb carbon dioxide in the air.



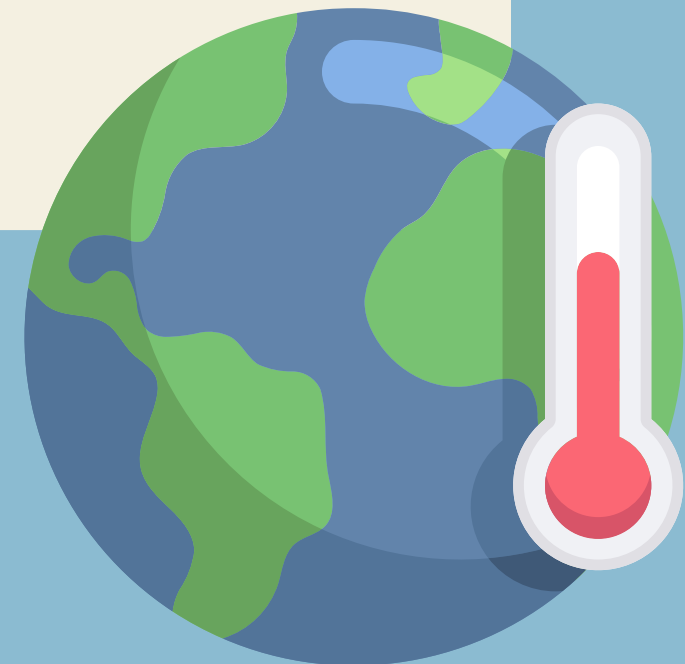


**3. Water Vapour – Most water vapour ends up in the atmosphere in a natural way – for example, when water evaporates from the oceans and seas. However, some human activities such as power plant cooling and flying can lead to the creation of this greenhouse gas as well.**





**These are just a few of the many causes of global warming. We should understand what we can do to decrease our negative impact on the planet to protect our world. Here are some of the effects of global warming:**







**1. Ice is melting at the North and South Poles, so a lot of animals such as polar bears, seals and penguins lose their habitat.**



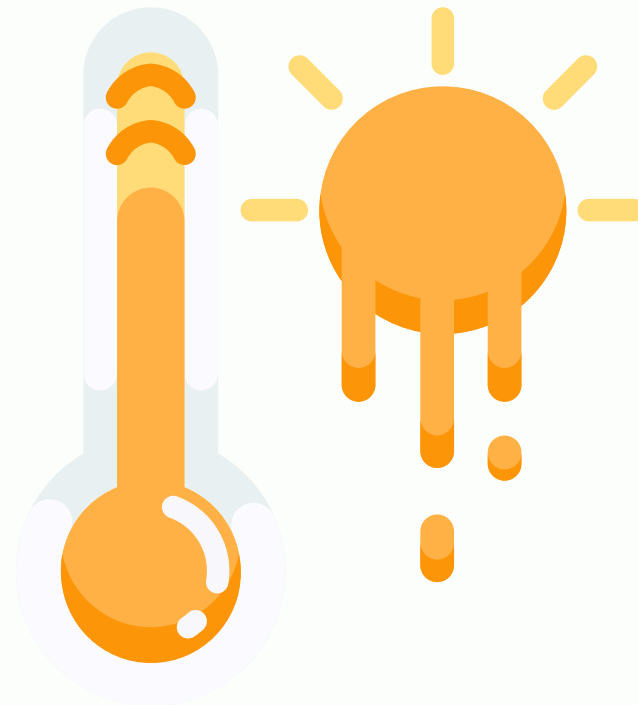
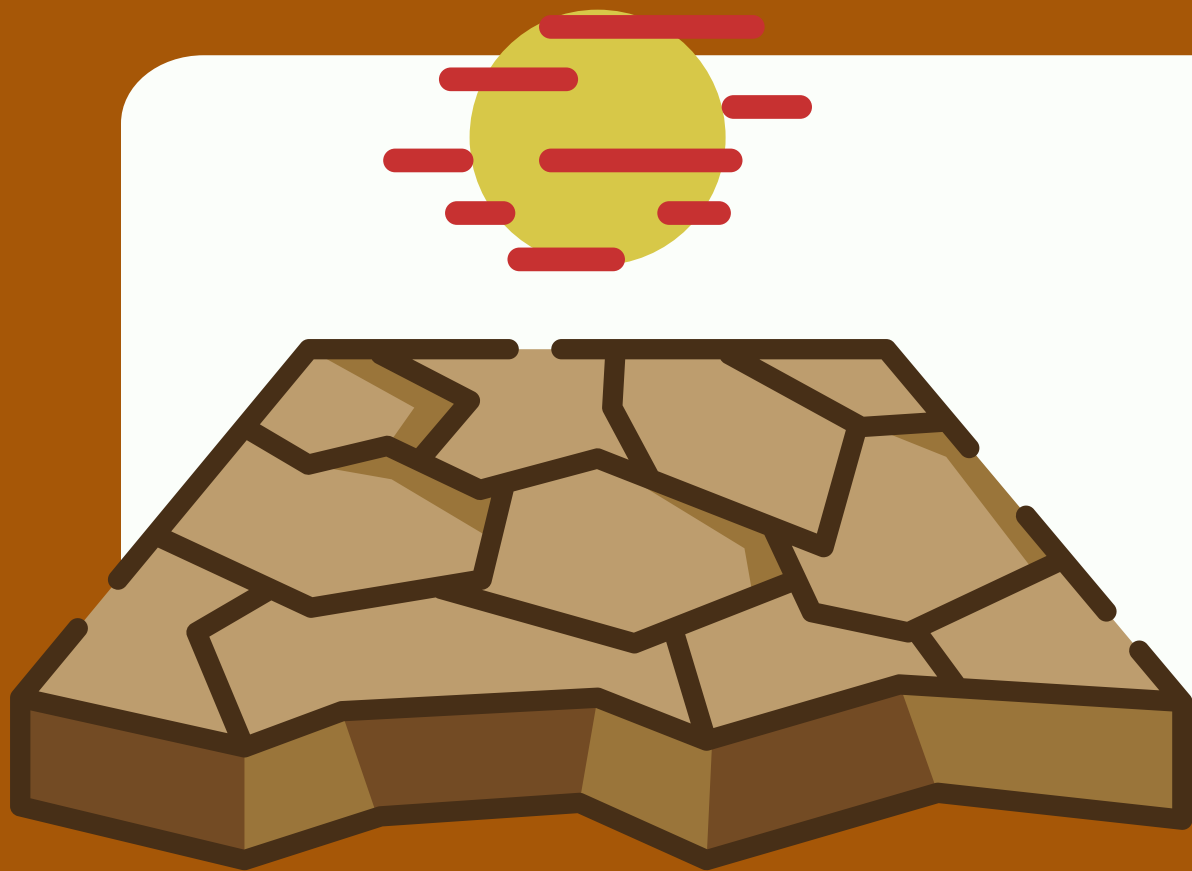


**2. We're experiencing more extreme weather events, including storms, hurricanes and tornadoes. These are dangerous because they can injure people.**





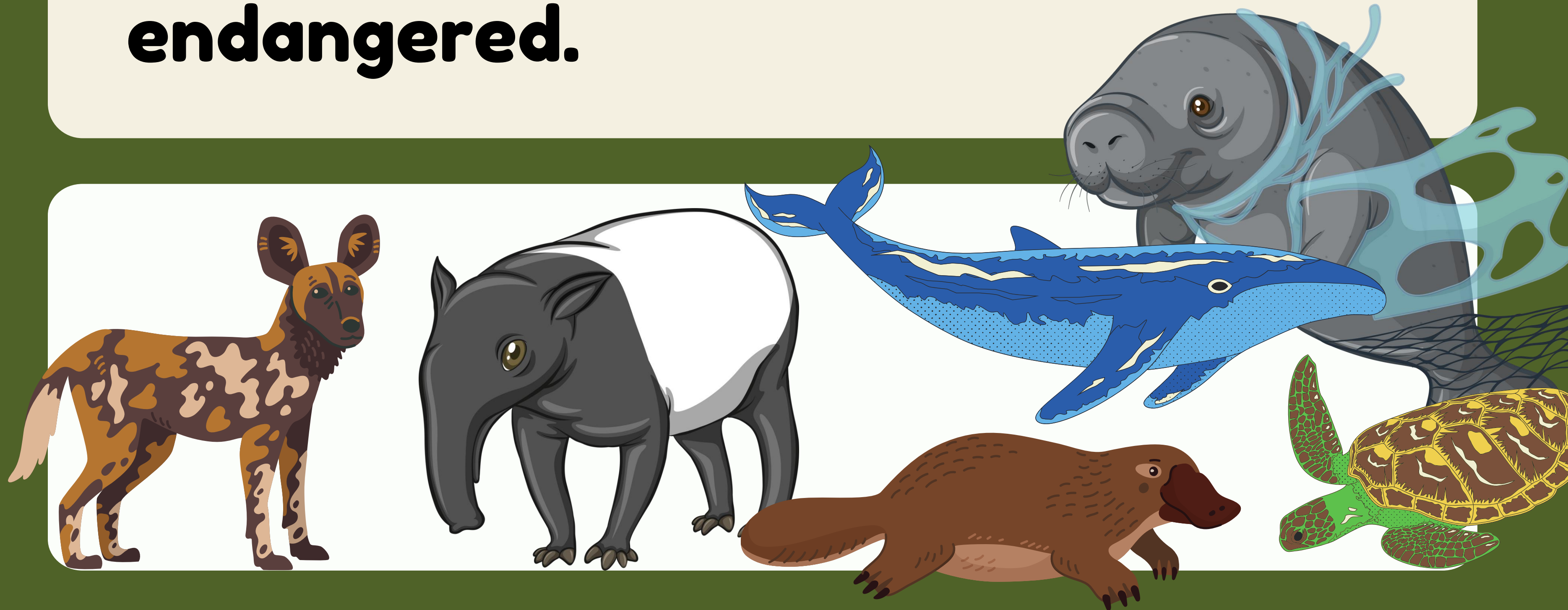
**3. We're starting to experience hotter temperatures and droughts, so there will be less water and food for people.**







## 4. Animal species are becoming endangered.





**In conclusion, global warming will be affecting us in many ways. Our world will become hotter and hotter, so could we survive in the future if we don't help save the world?**





# ใบงานที่ 1

## เรื่อง บทอ่าน Global Warming



(สามารถดาวน์โหลดได้ที่ [www.dltv.ac.th](http://www.dltv.ac.th))

Instructions: Write T if the statement is TRUE and write F if the statement is FALSE.

1. Many greenhouse gases occur because of human activities.
2. The temperature of our world is increasing because of the greenhouse gases.
3. Carbon dioxide is not a type of the greenhouse gases.
4. Human cut many trees down, so there are fewer trees left to absorb carbon dioxide in the air.
5. Flying doesn't cause greenhouse gases.
6. Ice at the North and South poles is melting, so many animals can enjoy swimming in the poles.
7. Human will experience more extreme weathers because of global warming crisis.
8. Global warming can make animals endangered.







**TRUE  
OR  
FALSE.**

**1. Many greenhouse gases occur because of human activities.**



**Greenhouse gases are the biggest factor to cause global warming. Many of them occur because of human activities.**

**2. The temperature of our world is increasing because of the greenhouse gases.**



**Because of human activities, so the earth's temperature is increasing.**



**3. Carbon dioxide is not a type of the greenhouse gases.**



**Carbon dioxide is a greenhouse gas and it's very harmful to the environment.**

**4. Human cut many trees down, so there are fewer trees left to absorb carbon dioxide in the air.**



**This leads to global warming because there are fewer trees left to absorb carbon dioxide in the air.**

**5. Flying doesn't  
cause greenhouse  
gases.**



**Power plant cooling and  
flying can lead to the  
creation of this  
greenhouse gas as well.**



**6. Ice at the North and South poles is melting, so many animals can enjoy swimming in the poles.**



**Ice is melting at the North and South Poles, so a lot of animals lose their habitat.**

**7. Human will experience more extreme weathers because of global warming crisis.**



**We're experiencing more extreme weather events, including storms, hurricanes and tornadoes.**

**8. Global warming  
can make animals  
endangered.**



**Animal species are  
becoming endangered.**



เพราะว่า

The connector **because** signals a reason, helping students understand why something happens.

The earth is warming **because** of greenhouse gas emissions.

reason

เนื่องจาก

Using **because of** emphasizes the cause behind an effect.

**Wildlife is losing habitat **because of** deforestation, which leads to biodiversity loss.**

ดังนั้น

The word **so** indicates a consequence.

**The ice caps are melting, so sea levels are rising, impacting coastal communities.**





## ใบงานที่ 2

### เรื่อง Causes and Effects



(สามารถดาวน์โหลดได้ที่ [www.dltv.ac.th](http://www.dltv.ac.th))

Instructions: Complete the meaningful sentences by showing the appropriate causes or effects.

1.



Animal species are becoming endangered because \_\_\_\_\_.

2.



Many trees are being cut down, so \_\_\_\_\_.

3.

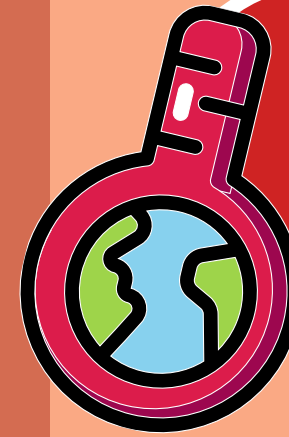


Human will experience more and more natural disasters because of \_\_\_\_\_.

4.



Humans burn a lot of fossil fuels to make electricity, so \_\_\_\_\_.



## Worksheet 2

**Instructions:**  
**Complete the**  
**meaningful sentences**  
**by showing the**  
**appropriate causes or**  
**effects.**

1.



Animal species are becoming endangered because\_\_\_\_\_.

2.



Many trees are being cut down, so \_\_\_\_\_.

3.



Human will experience more and more natural disasters because of\_\_\_\_\_.

4.



Humans burn a lot of fossil fuels to make electricity, so\_\_\_\_\_.



## Worksheet 2

**1. Animal species are becoming endangered because**  
**ice at the North and South poles is melting.**







## Worksheet 2

2. Many trees are  
being cut down, **so**  
**many animals lose**  
**their habitats.**







## Worksheet 2

**3. Humans will  
experience more and  
more natural disasters  
because of  
global warming.**

---





## Worksheet 2

4. Humans burn a lot of fossil fuels to make electricity, **so**  
carbon dioxide is  
released into the air.



# Wrap It Up

## Because

The connector **because** signals a reason, helping students understand why something happens.

## Because of

Using **because of** emphasizes the cause behind an effect.

## So

The word **so** indicates a consequence.







บทเรียนครั้งต่อไป

# Climate Change Solutions



(สามารถดาวน์โหลดได้ที่ [www.dltv.ac.th](http://www.dltv.ac.th))







## สิ่งที่ต้องเตรียม

1. ใบความรู้ที่ 1 เรื่อง บทอ่าน Climate Solutions
2. ใบงานที่ 1 เรื่อง Put the ideas in order
3. ใบงานที่ 2 เรื่อง What should I do?



สามารถดาวน์โหลดได้ที่  
[www.dltv.ac.th](http://www.dltv.ac.th)