

รายวิชา ภาษาอังกฤษ

รหัสวิชา อ23101 ชั้นมัธยมศึกษาปีที่ 3

หน่วยการเรียนรู้ที่ 4 **Science and Technology**

เรื่อง **Smart Living with AI 2**

ครูผู้สอน ครูศุภณัฐ รักพงษ์



Smart Living with AI 2

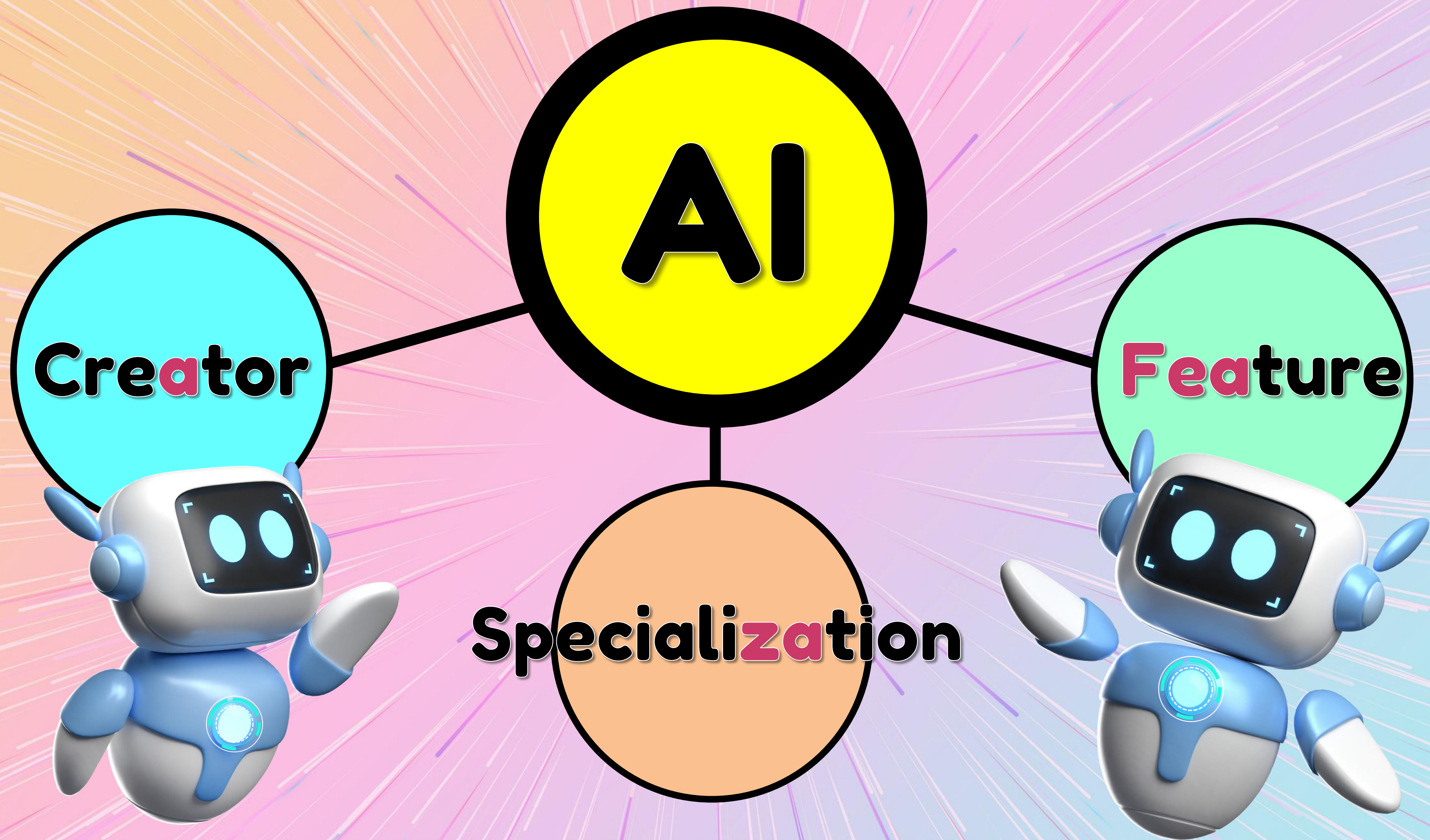




Objective

**Be able to use reading strategies
to interpret a reading passage
about AI.**





Reading Strategies

Reference



Implication



Inference



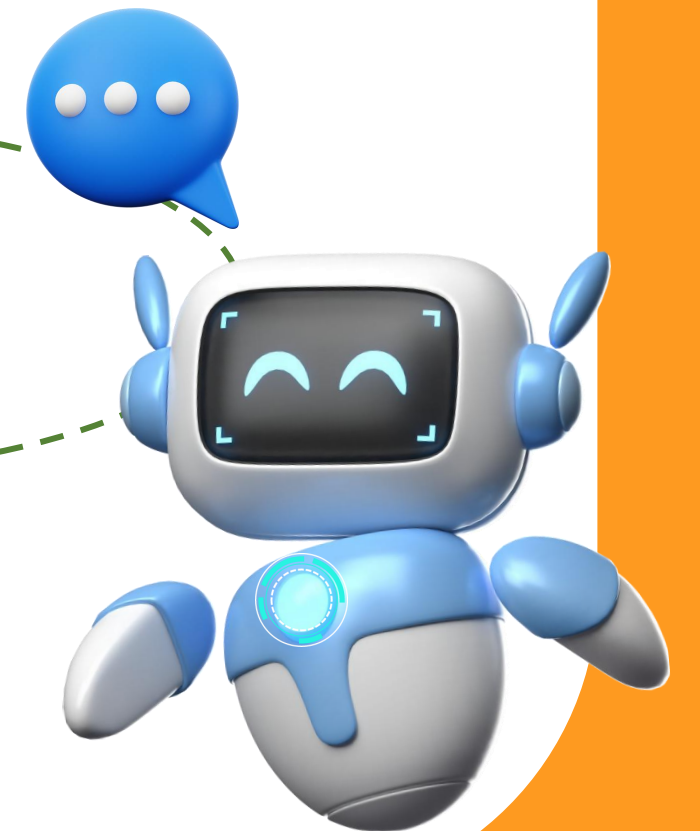
Reference

Reference is when **a word in the text** (often a pronoun or phrase) **refers back to something else in the passage.**

Sarah gave the book to Mia
because **she** had already read **it**.

She refers to.....**Sarah**..

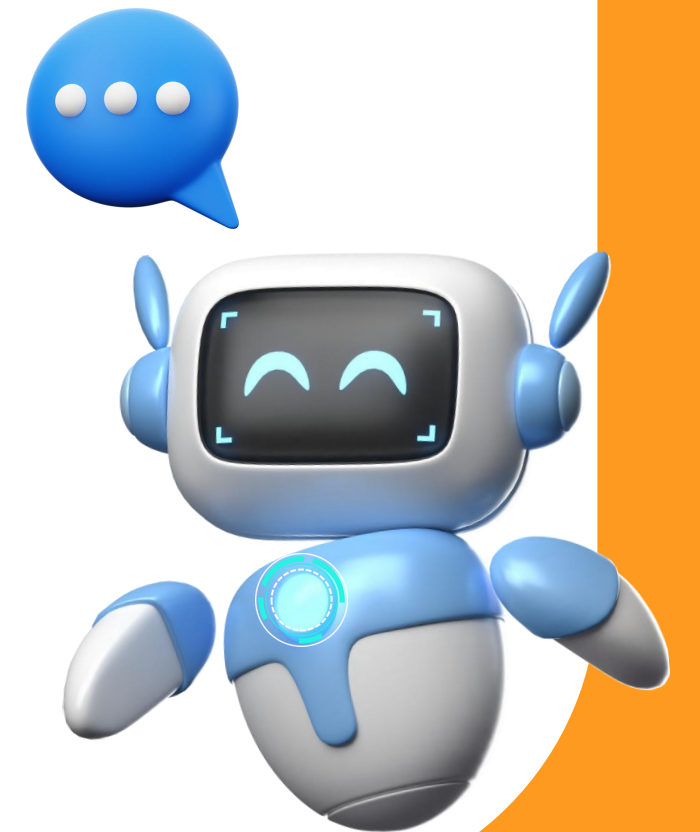
It refers to ..**the book**..



Reference

I saw a movie last night. It was really exciting.

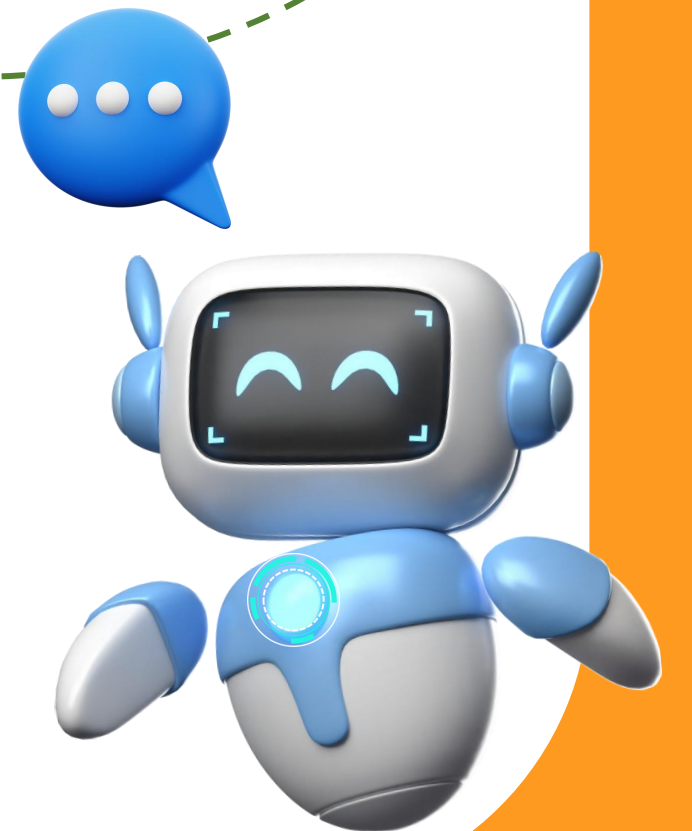
It refers to...**the movie.**



Reference

**Tom and Jack went to the park.
They played basketball until it got dark.**

They refers to.....**Tom and Jack.**



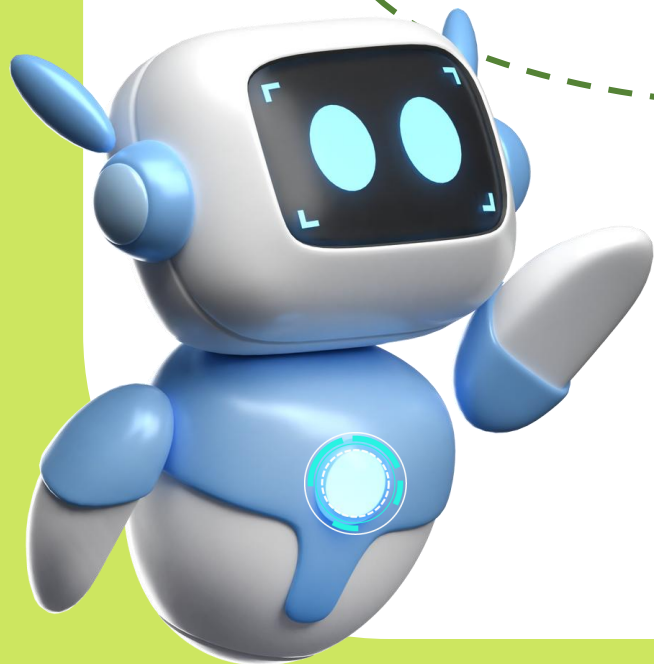
Implication

An implication is something the text suggests indirectly but doesn't say directly.

“She slammed the door and didn't answer his calls.”

What does the text imply?

She is angry.

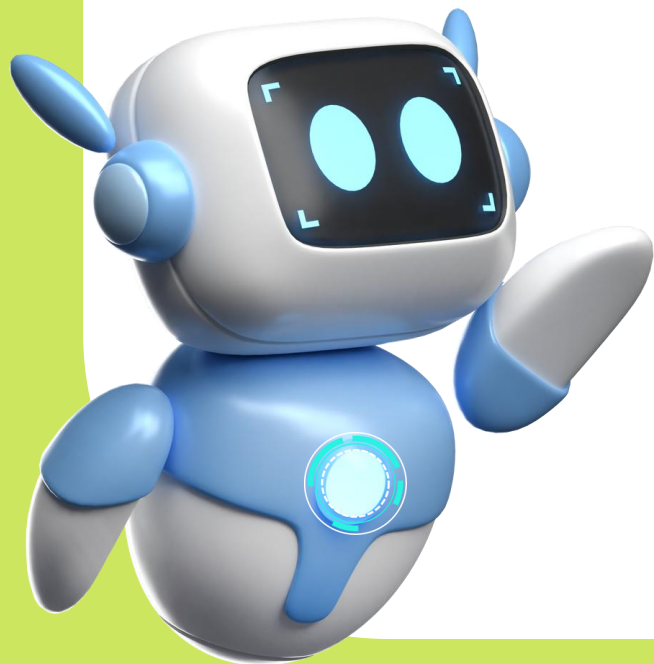


Implication

“Maya always kept an extra pen in her bag, even though she never needed it herself.”

The sentence *implies* that Maya is a person.

careful, prepared, or considerate

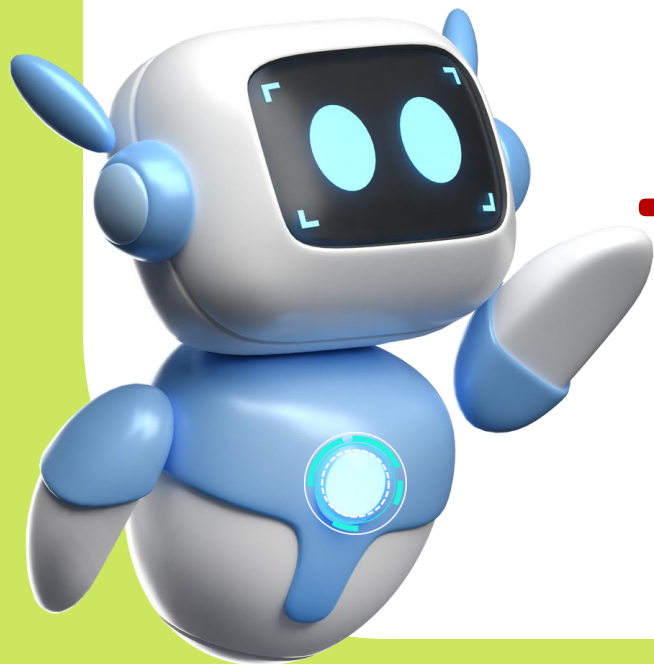


Implication

**Alex walked into the room,
and everyone suddenly stopped talking.**

The sentence **implies that**

- People might have been talking about Alex.**
- Alex made them uncomfortable.**



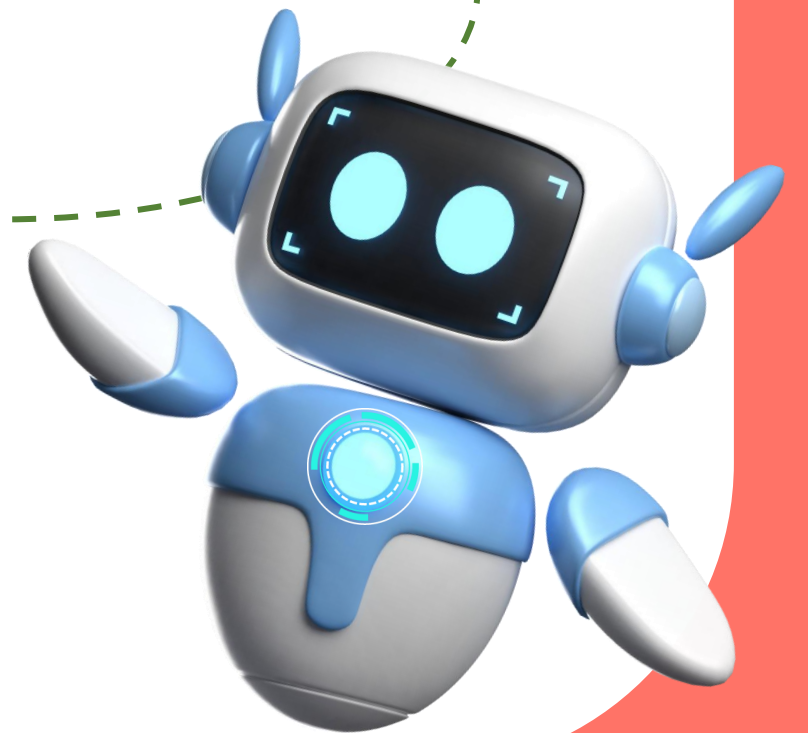
Inference

An inference is a **conclusion** or guess from text clues + your knowledge/experience.

The ground is wet, and children are carrying umbrellas.

What can you infer about the weather today?

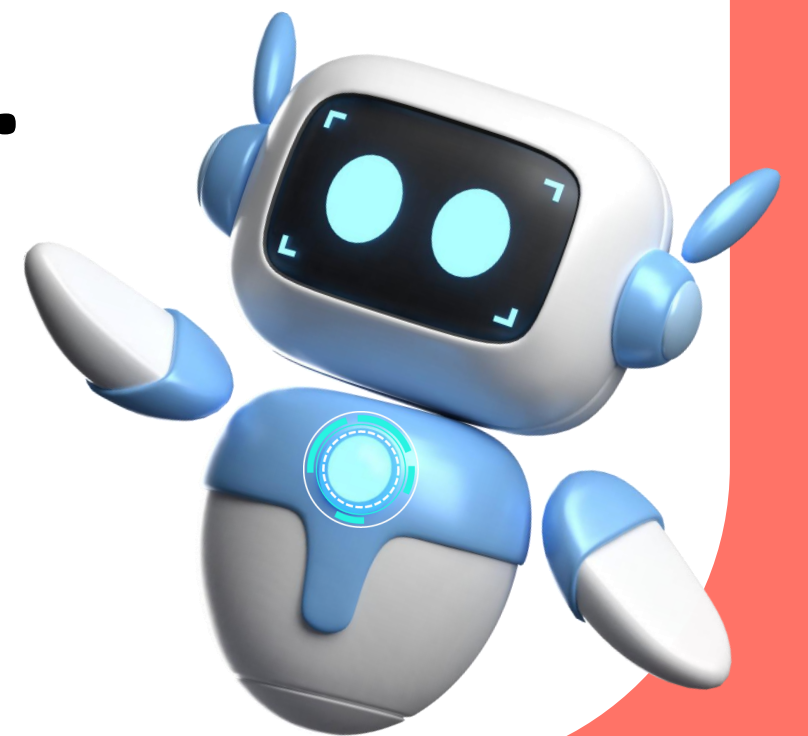
It's raining.



Inference

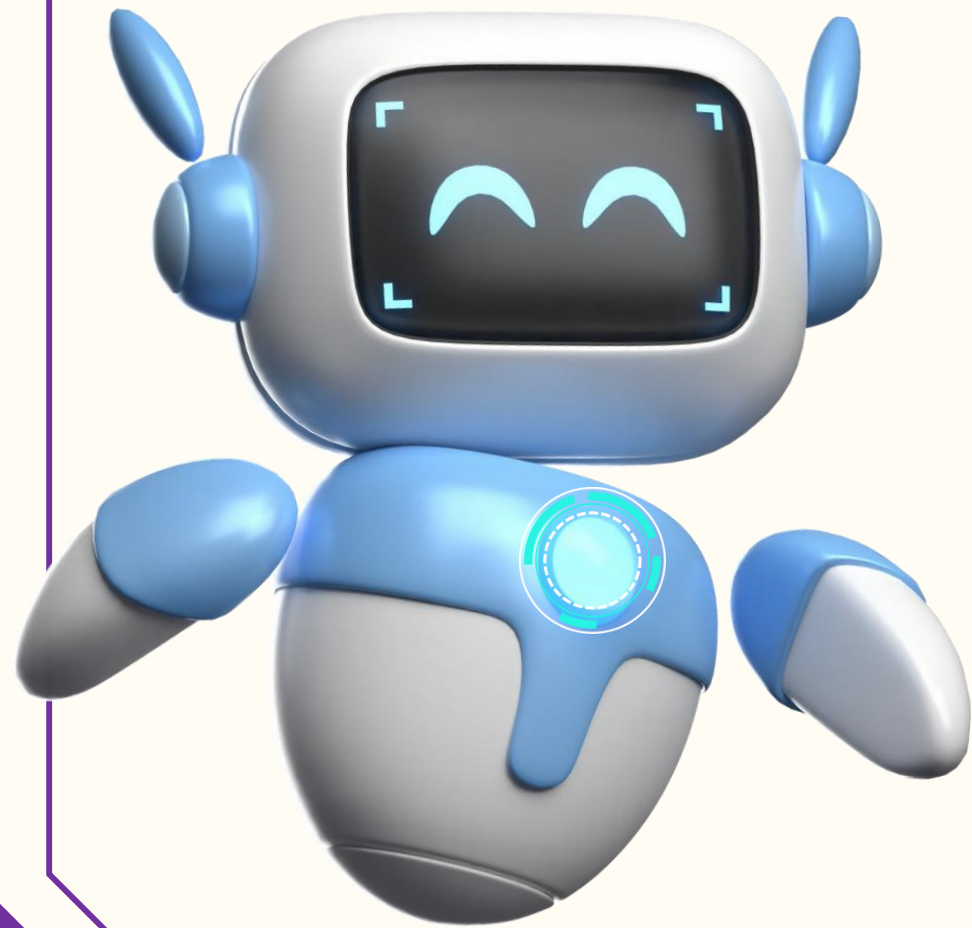
**“Ethan came home with a big smile
and a gold medal around his neck.”**

**It can be inferred from the text that Ethan.....
won a competition**





Note!!



The word refers.
The author implies.
The reader infers.

ใบความรู้ที่ 2 เรื่อง 3 Influential Artificial Intelligences
หน่วยการเรียนรู้ที่ 4 เรื่อง Science and Technology
แผนการจัดการเรียนรู้ที่ 2 เรื่อง Smart Living with AI 2
รายวิชา ภาษาอังกฤษ รหัสวิชา อ23101 ภาคเรียนที่ 1 ชั้นมัธยมศึกษาปีที่ 3

Paragraph 1: ChatGPT

1 ChatGPT, made by OpenAI, is a smart computer program that can talk with
2 people and write text like a human. It can chat, answer questions, and help with things
3 like writing essays or summarizing information. ChatGPT has been trained with a lot of
4 text data, so it knows how to understand what people are saying and give good answers.
5 One of its main features is that it can create new content, making it useful for many
6 things, from customer service to entertainment.

Paragraph 2: Gemini

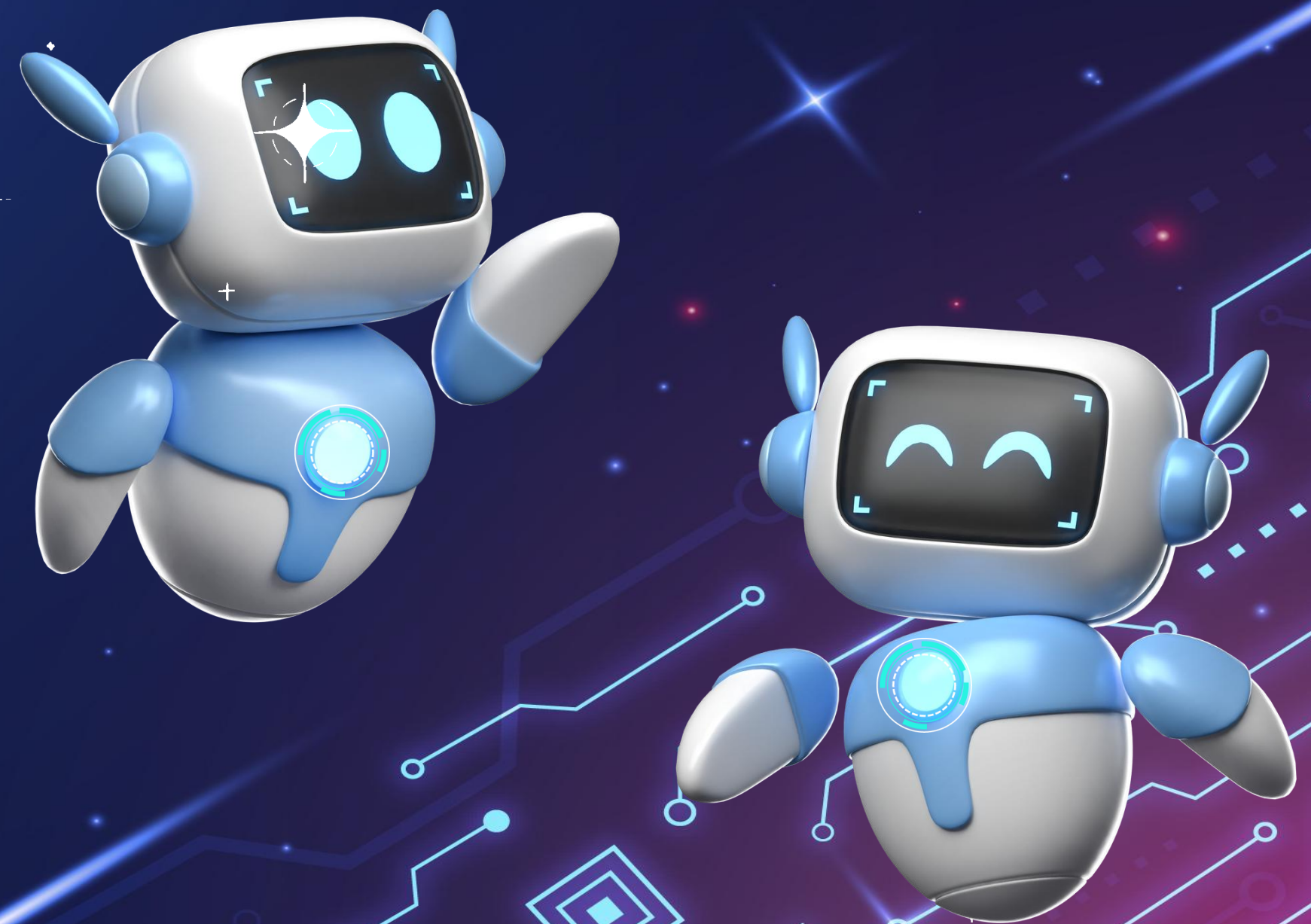
7 Gemini, made by Google DeepMind, is another strong AI program similar to
8 ChatGPT. It is very good at understanding and creating text and can also handle hard
9 questions, giving detailed and accurate answers. Gemini is often used in research
10 because it is good at solving problems and looking at scientific data. Like ChatGPT, it can
11 have meaningful conversations and help with different tasks, but it focuses more on
12 being exact and giving deep information.

Paragraph 3: Copilot

13 Copilot, made by OpenAI with GitHub, is an AI assistant designed to help
14 programmers write code. It can suggest lines or blocks of code, help fix mistakes, and
15 explain programming ideas. Copilot is trained on a lot of public code, which allows it to
16 understand different programming languages and offer good suggestions. Unlike
17 ChatGPT and Gemini, which work with general text, Copilot is specialized for coding
18 tasks, making it a valuable tool for developers.

Handout 2

3 Influent Artificial Intelligences



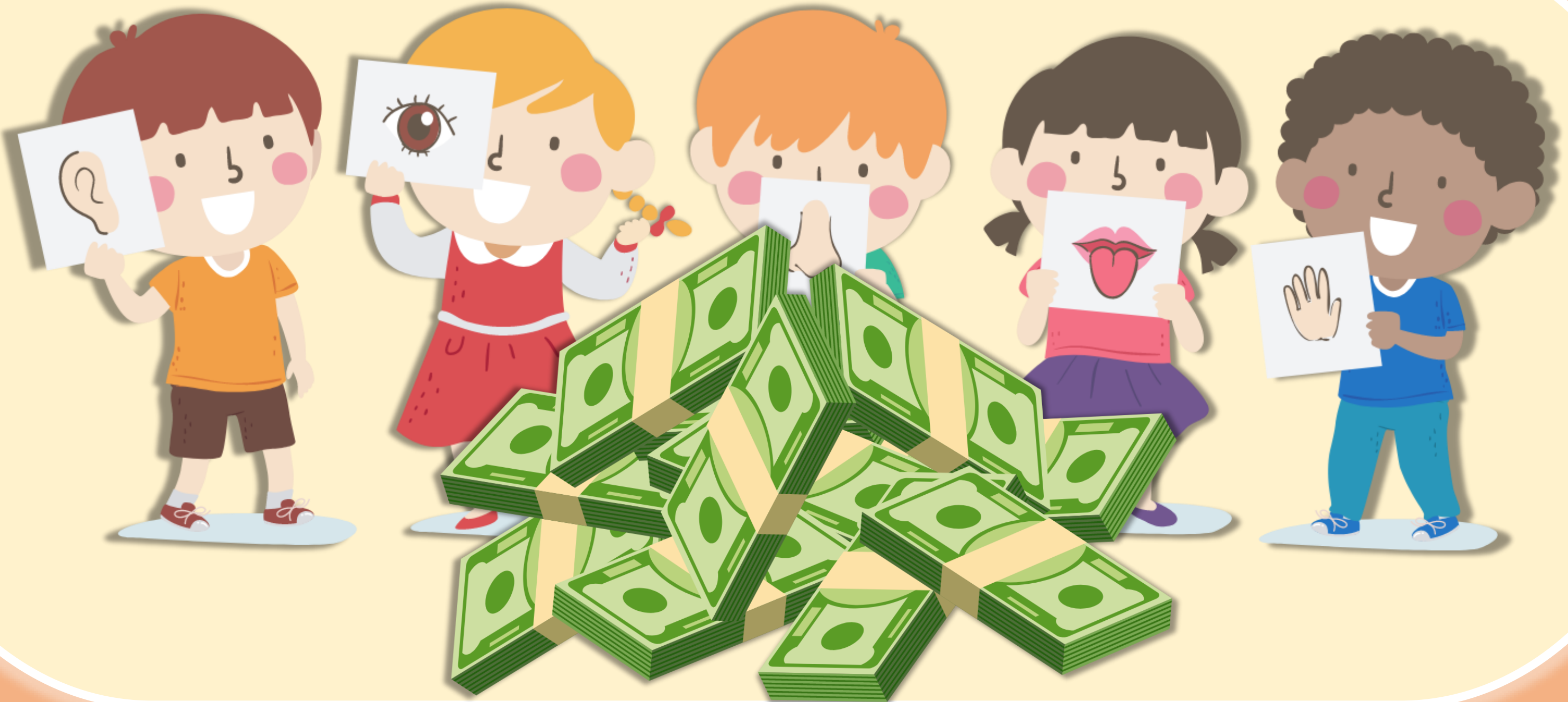
Money Drop



1. Get into groups of five.



2. Get money from the teacher.



3. Read the question on the screen.

What is not black?
1. hair
2. eye
3. teeth
4. ink

1

2

3

4

4. Put the money on the box that matches your answer.

What is not black?	
1. hair	
2. eye	
3. teeth	
4. ink	



1

2

3

4

Money Drop



1. The word “**accurate**” (line 9) has the closest meaning to ____.

1. correct

2. difficult

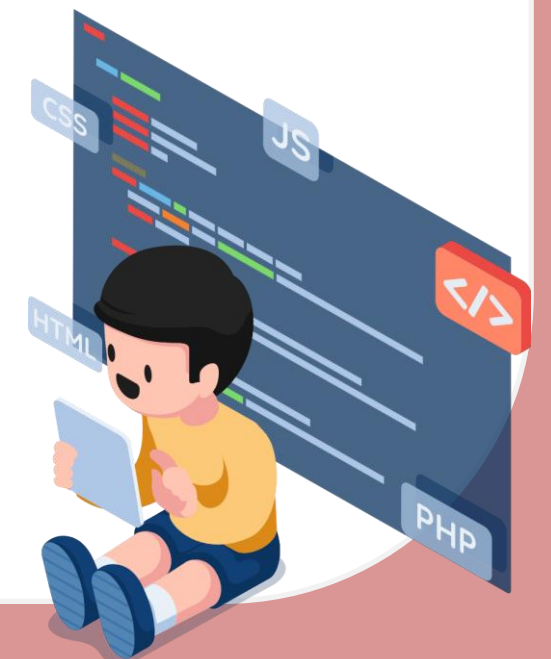
3. important

4. interesting



Paragraph 2: Gemini

7 Gemini, made by Google DeepMind, is another strong AI program similar to
8 ChatGPT. It is very good at understanding and creating text and can also handle hard
9 questions, giving detailed and **accurate** answers. Gemini is often used in research
10 because it is good at solving problems and looking at scientific data. Like ChatGPT, it can
11 have meaningful conversations and help with different tasks, but it focuses more on
12 being exact and giving deep information.



2. The pronoun “ **it** ” (line 10) **refers** to ____.

1. Copilot

2. ChatGPT

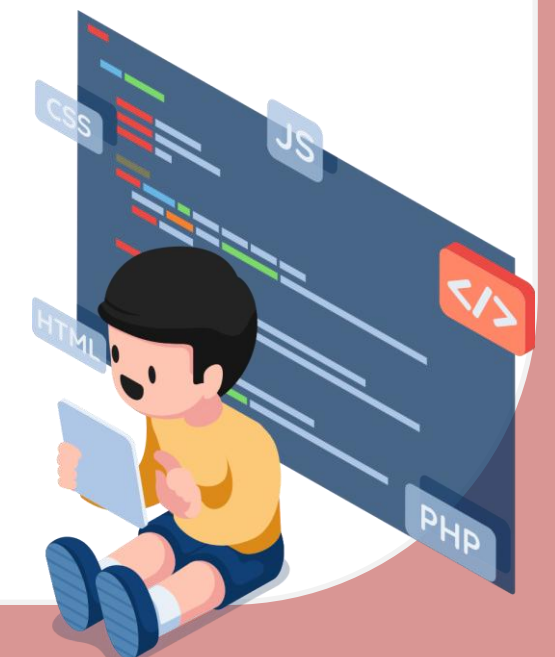
3. Gemini

4. scientific data



Paragraph 2: Gemini

7 Gemini, made by Google DeepMind, is another strong AI program similar to
8 ChatGPT. It is very good at understanding and creating text and can also handle hard
9 questions, giving detailed and accurate answers. Gemini is often used in research
10 because it is good at solving problems and looking at scientific data. Like ChatGPT, it can
11 have meaningful conversations and help with different tasks, but it focuses more on
12 being exact and giving deep information.



3. The Phrase “Unlike ChatGPT and Gemini” (line 16-17) **implies** that Copilot is ____.

1. used with general data

2. mainly used in research

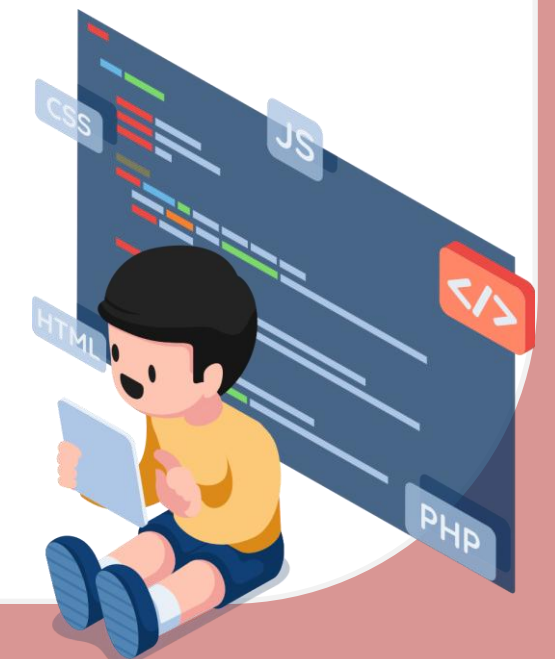
3. one of the most valuable AIs

4. focused on programming tasks



Paragraph 3: Copilot

13 Copilot, made by OpenAI with GitHub, is an AI assistant designed to help
14 programmers write code. It can suggest lines or blocks of code, help fix mistakes, and
15 explain programming ideas. Copilot is trained on a lot of public code, which allows it to
16 understand different programming languages and offer good suggestions. Unlike
17 ChatGPT and Gemini, which work with general text, Copilot is specialized for coding
18 tasks, making it a valuable tool for developers.



4. It can be **inferred** from the passage that ____.

1. Each AI has different specializations

2. Copilot can't understand general texts

3. Gemini was created for scientists

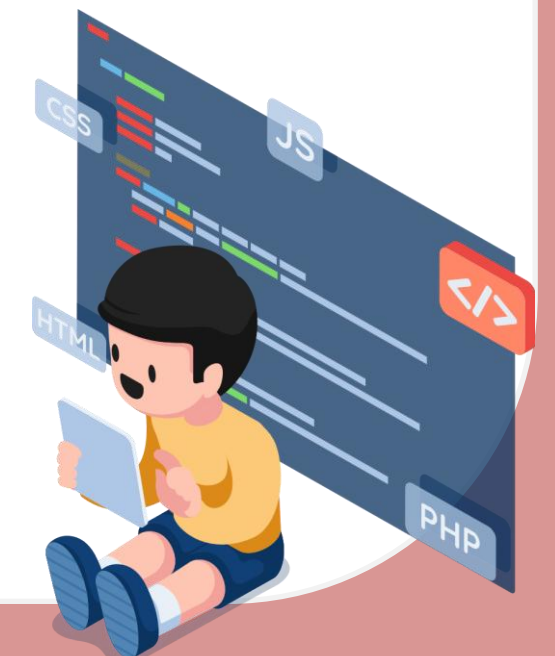
4. ChatGPT can understand human feelings



1 ChatGPT, made by OpenAI, is a smart computer program that can talk with
2 people and write text like a human. It can chat, answer questions, and help with things
3 like writing essays or summarizing information. ChatGPT has been trained with a lot of
4 text data, so it knows how to understand what people are saying and give good answers.
5 One of its main features is that it can create new content, making it useful for many
6 things, from customer service to entertainment.

7 Gemini, made by Google DeepMind, is another strong AI program similar to
8 ChatGPT. It is very good at understanding and creating text and can also handle hard
9 questions, giving detailed and accurate answers. Gemini is often used in research
10 because it is good at solving problems and looking at scientific data. Like ChatGPT, it can
11 have meaningful conversations and help with different tasks, but it focuses more on
12 being exact and giving deep information.

13 Copilot, made by OpenAI with GitHub, is an AI assistant designed to help
14 programmers write code. It can suggest lines or blocks of code, help fix mistakes, and
15 explain programming ideas. Copilot is trained on a lot of public code, which allows it to
16 understand different programming languages and offer good suggestions. Unlike
17 ChatGPT and Gemini, which work with general text, Copilot is specialized for coding
18 tasks, making it a valuable tool for developers.



5. ChatGPT can handle all of the following tasks, **EXCEPT ____.**

1. chatting with people

2. contacting customers

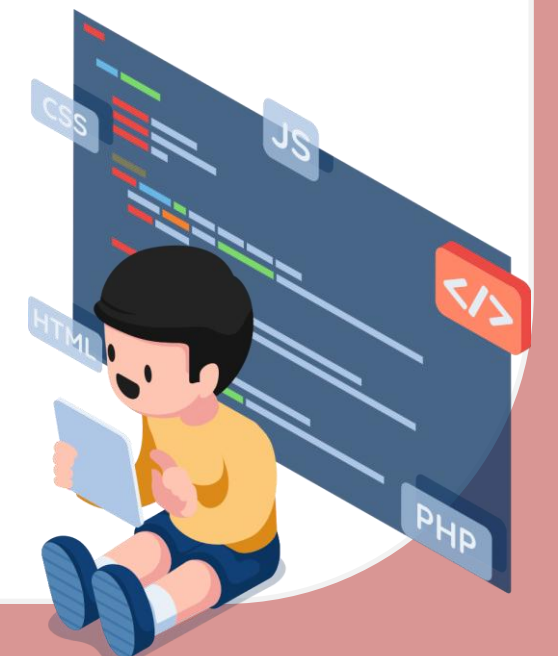
3. composing essays

4. summarizing data



/ Paragraph 1: ChatGPT

- 1 ChatGPT, made by OpenAI, is a smart computer program that can talk with
- 2 people and write text like a human. It can chat, answer questions, and help with things
- 3 like writing essays or summarizing information. ChatGPT has been trained with a lot of
- 4 text data, so it knows how to understand what people are saying and give good answers.
- 5 One of its main features is that it can create new content, making it useful for many
- 6 things, from customer service to entertainment.



6. The main **purpose** of the passage is to ____.

1. entertain AI users

2. introduce new AIs

3. compare different AIs

4. educate young generations

7 Gemini, made by Google DeepMind, is another strong AI program similar to
8 ChatGPT. It is very good at understanding and creating text and can also handle hard
9 questions, giving detailed and accurate answers. Gemini is often used in research
10 because it is good at solving problems and looking at scientific data. Like ChatGPT, it can
11 have meaningful conversations and help with different tasks, but it focuses more on
12 being exact and giving deep information.

13 Copilot, made by OpenAI with GitHub, is an AI assistant designed to help
14 programmers write code. It can suggest lines or blocks of code, help fix mistakes, and
15 explain programming ideas. Copilot is trained on a lot of public code, which allows it to
16 understand different programming languages and offer good suggestions. Unlike
17 ChatGPT and Gemini, which work with general text, Copilot is specialized for coding
18 tasks, making it a valuable tool for developers.

Let's Review!



Reading Strategies

Reference



Implication



Inference



**“Artificial intelligence is not a substitute
for human intelligence;
it is a tool to amplify human creativity
and ingenuity.”**

--- Fei-Fei Li ---

***(Co-Director of the Stanford Institute
for Human-Centered Artificial Intelligence)***

