





**Have you ever used a wireless mouse?**



# The Reflection of Device Usage

# จุดประสงค์การเรียนรู้

1. บอกโครงสร้างทางภาษา  
ในการเปรียบเทียบสิ่งของได้
2. พูดบรรยายเปรียบเทียบภาพ  
สิ่งของในอดีตกับปัจจุบันได้



# Vocabulary





camera (n.)



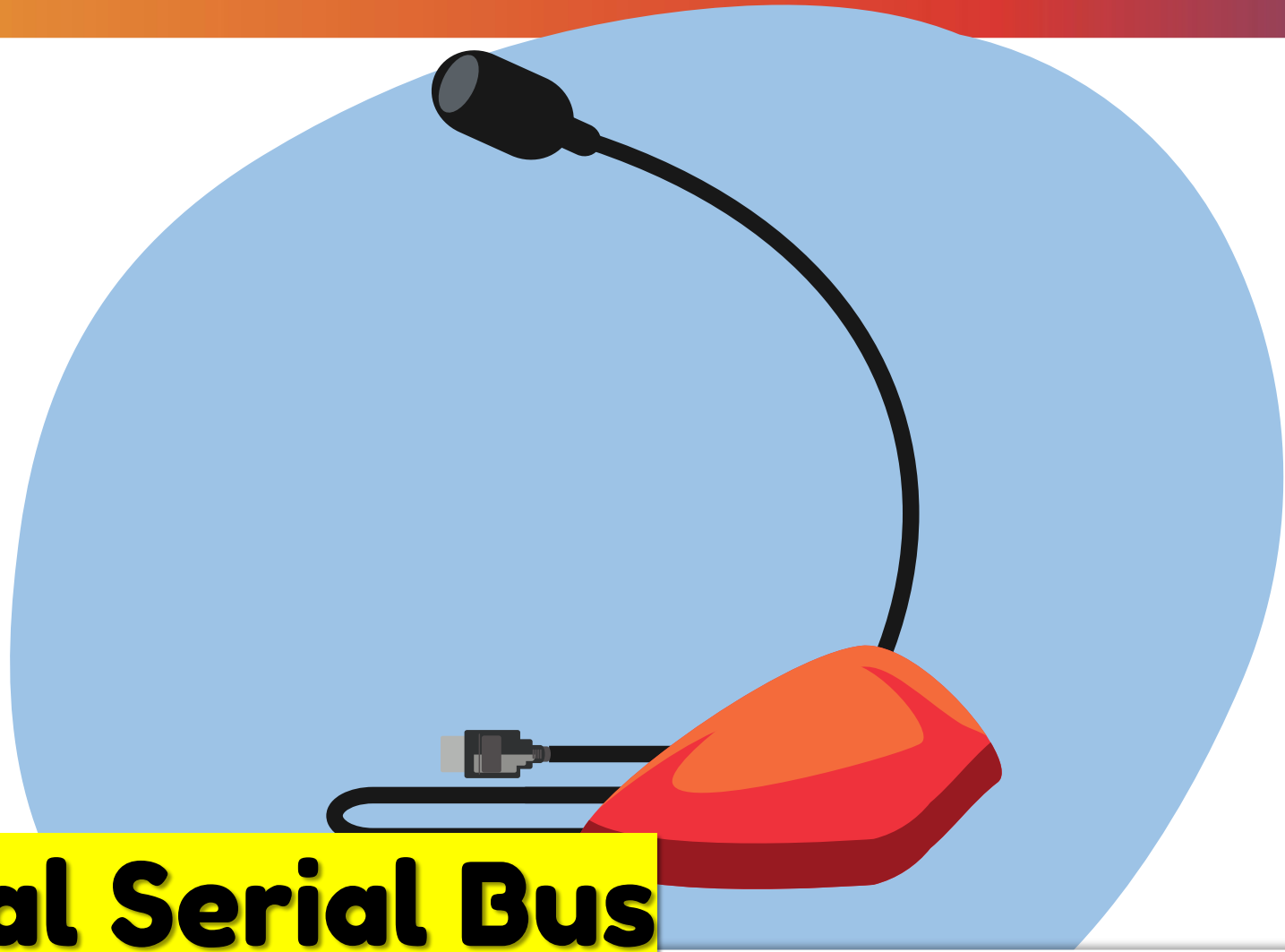


**personal computer (n.)**



power bank (n.)





**Universal Serial Bus**

**USB microphone (n.)**



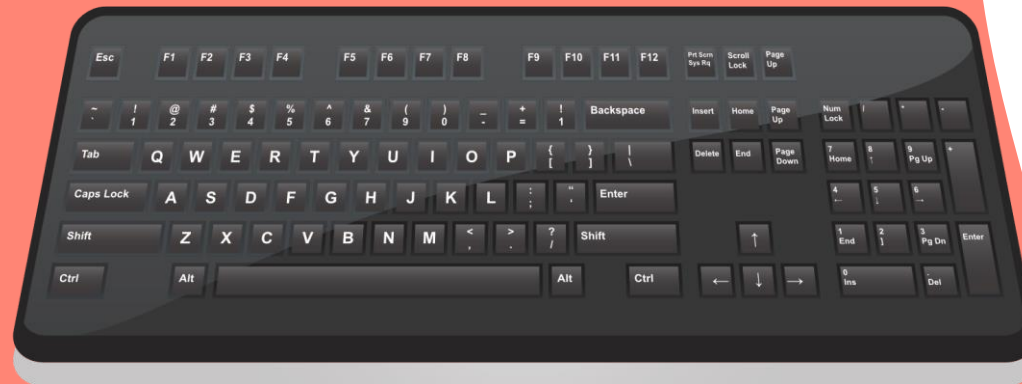
**smart TV (n.)**



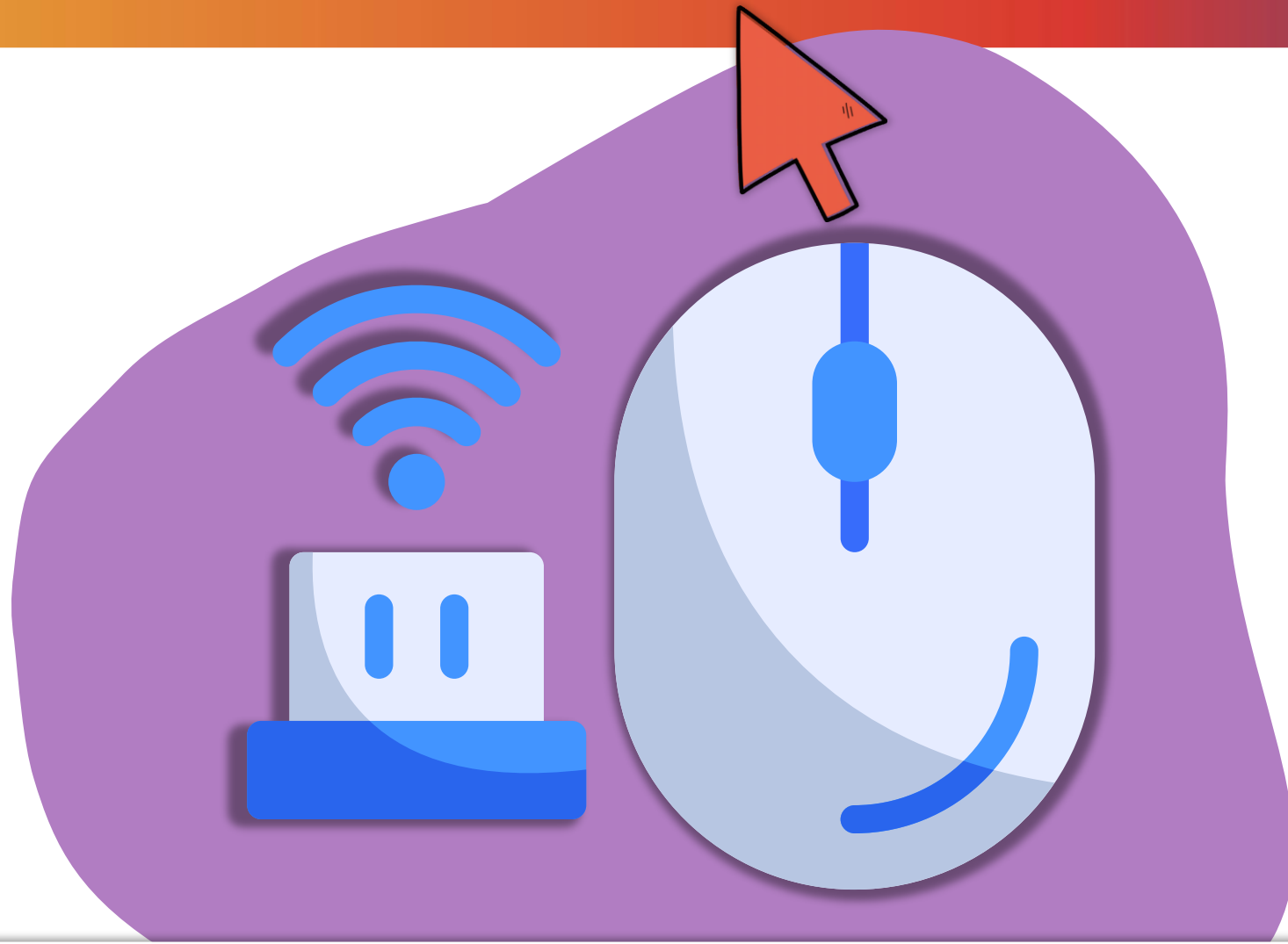
**bluetooth speaker (n.)**



wireless headphone (n.)



wireless keyboard (n.)



wireless mouse (n.)





**Check Your Memory**



**camera (n.)**



**personal computer (n.)**



**power bank (n.)**



**USB microphone (n.)**



**smart TV (n.)**





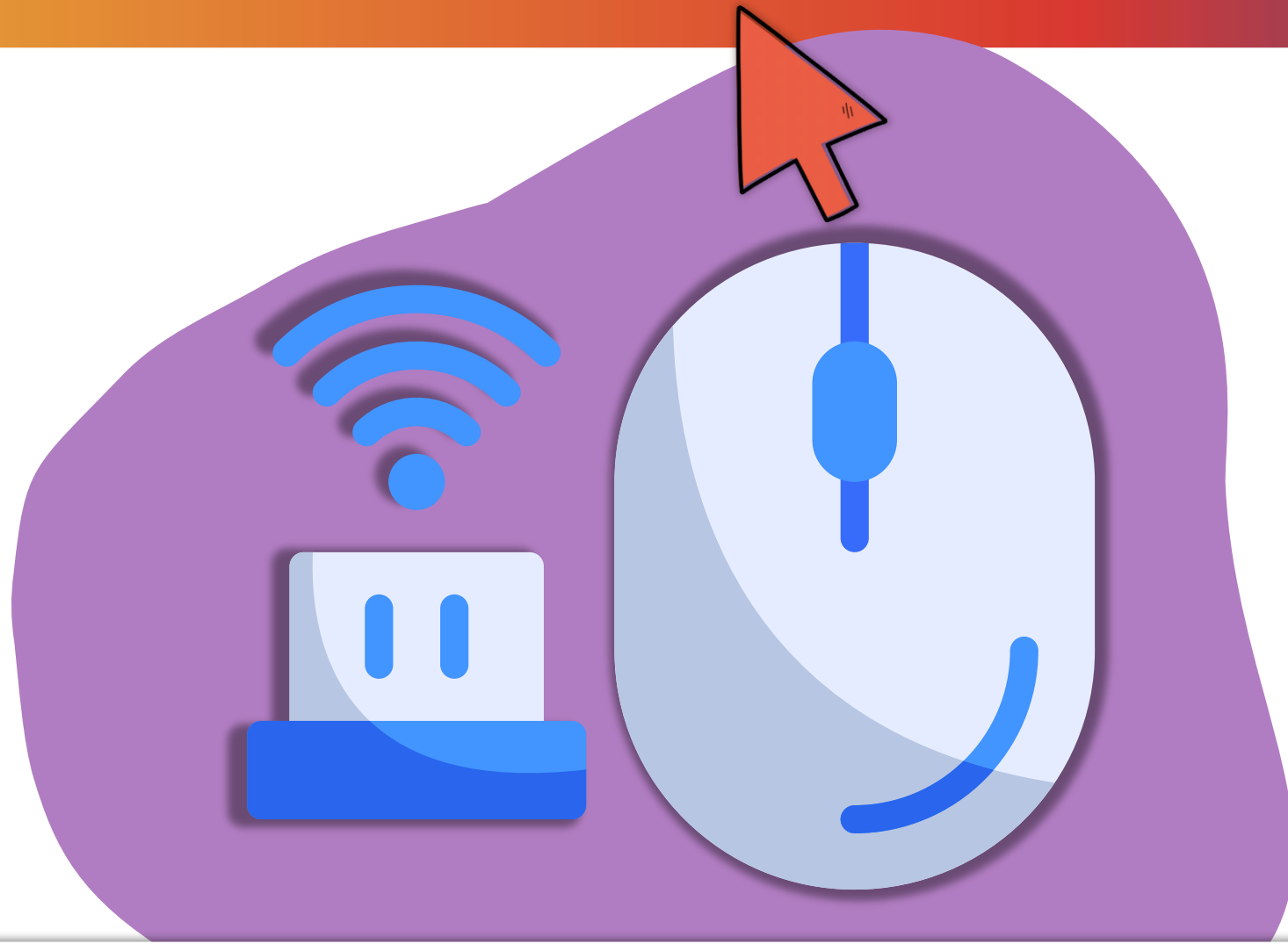
**bluetooth speaker (n.)**



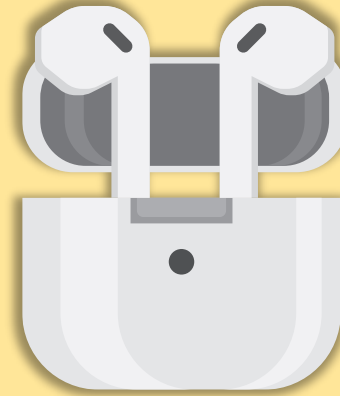
**wireless headphone (n.)**



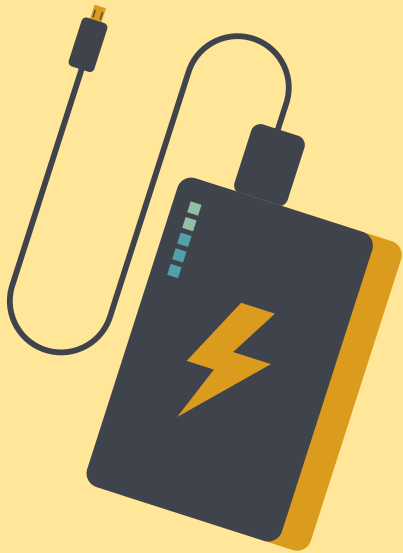
**wireless keyboard (n.)**



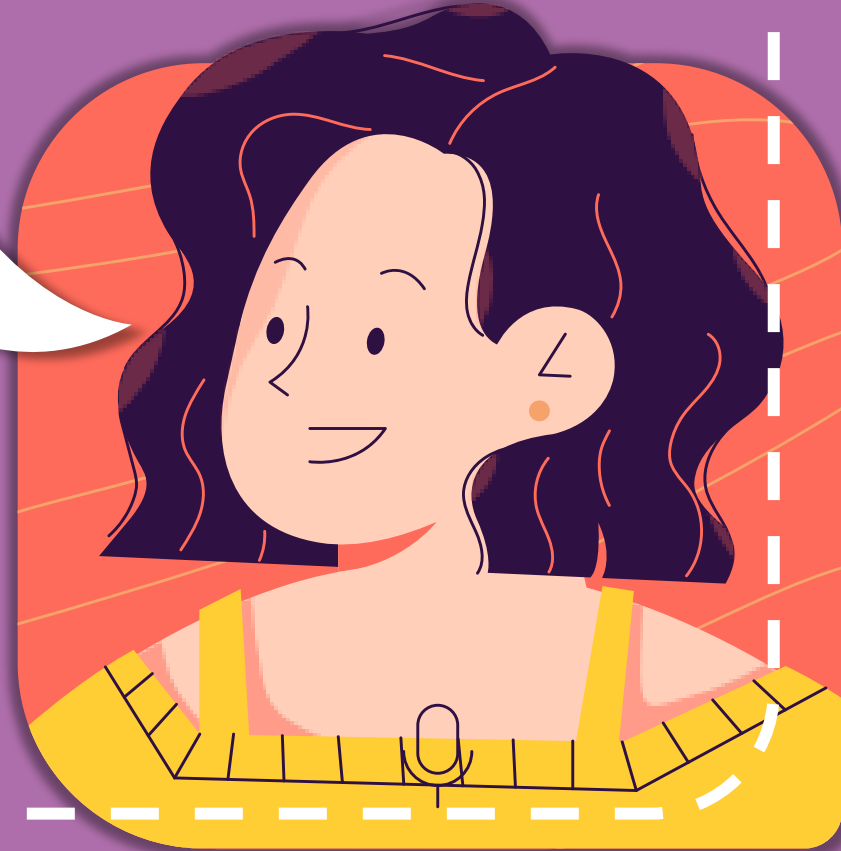
**wireless mouse (n.)**



Have you ever used these devices?



How often do you  
use these devices?

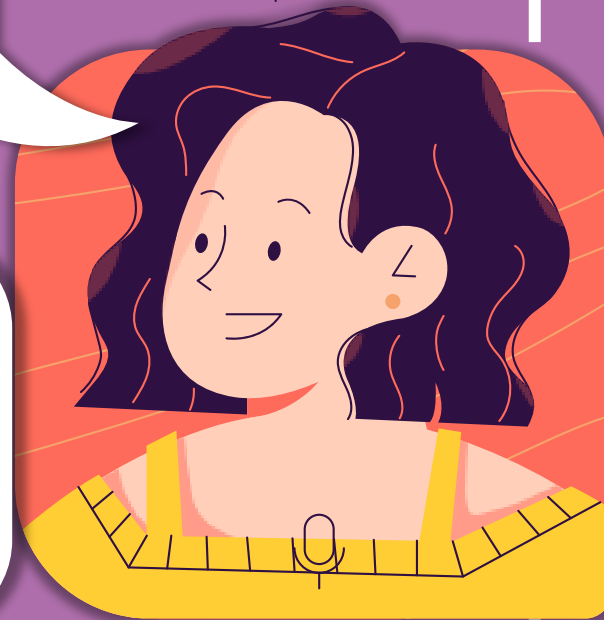






How often do you use  
this device?

I **often** use power bank  
on the way home.



# Adverbs of frequency



**never**



**rarely**



**sometimes**



**often**



**usually**



**always**



# Position of frequency adverbs

1. **After** the verb "be."
2. **Before** the other verbs.





never



rarely



sometimes



often



usually



always

A

Have you ever used  
USB microphone?

B

No, I've **never** used it.

0%





never



rarely



sometimes



often



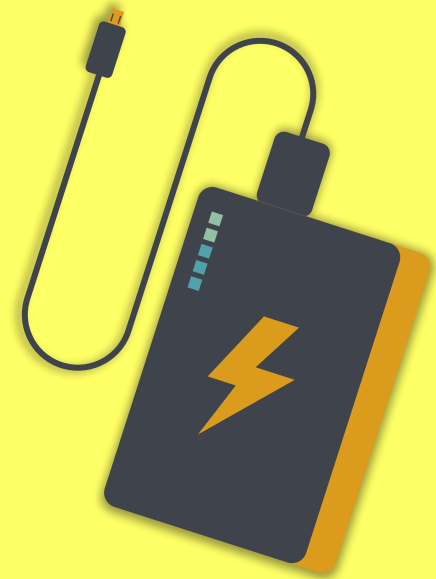
usually



always

A

Have you ever used a power bank ?



B

I **often** use a power bank on the way home.





never



rarely



sometimes



often



usually



always

A

How often do you use  
a wireless headphone?

B

I **always** use it when  
I go outside.

100%







# Time to Practice

A

How often do you use  
a wireless mouse ?



B

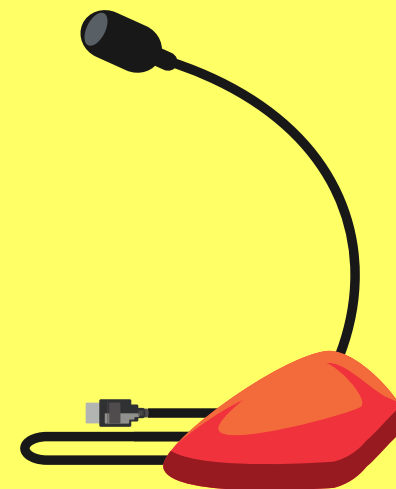
I usually use a wireless  
mouse .

80%



A

How often do you use  
a USB microphone ?



B

I often use a USB  
microphone .

75%



A

How often do you use  
a Bluetooth speaker ?



B

I sometimes use  
a bluetooth speaker.

50%



A

How often do you use  
a camera ?

---



B

I usually use a camera.

---

80%



A

How often do you use  
wireless keyboard ?

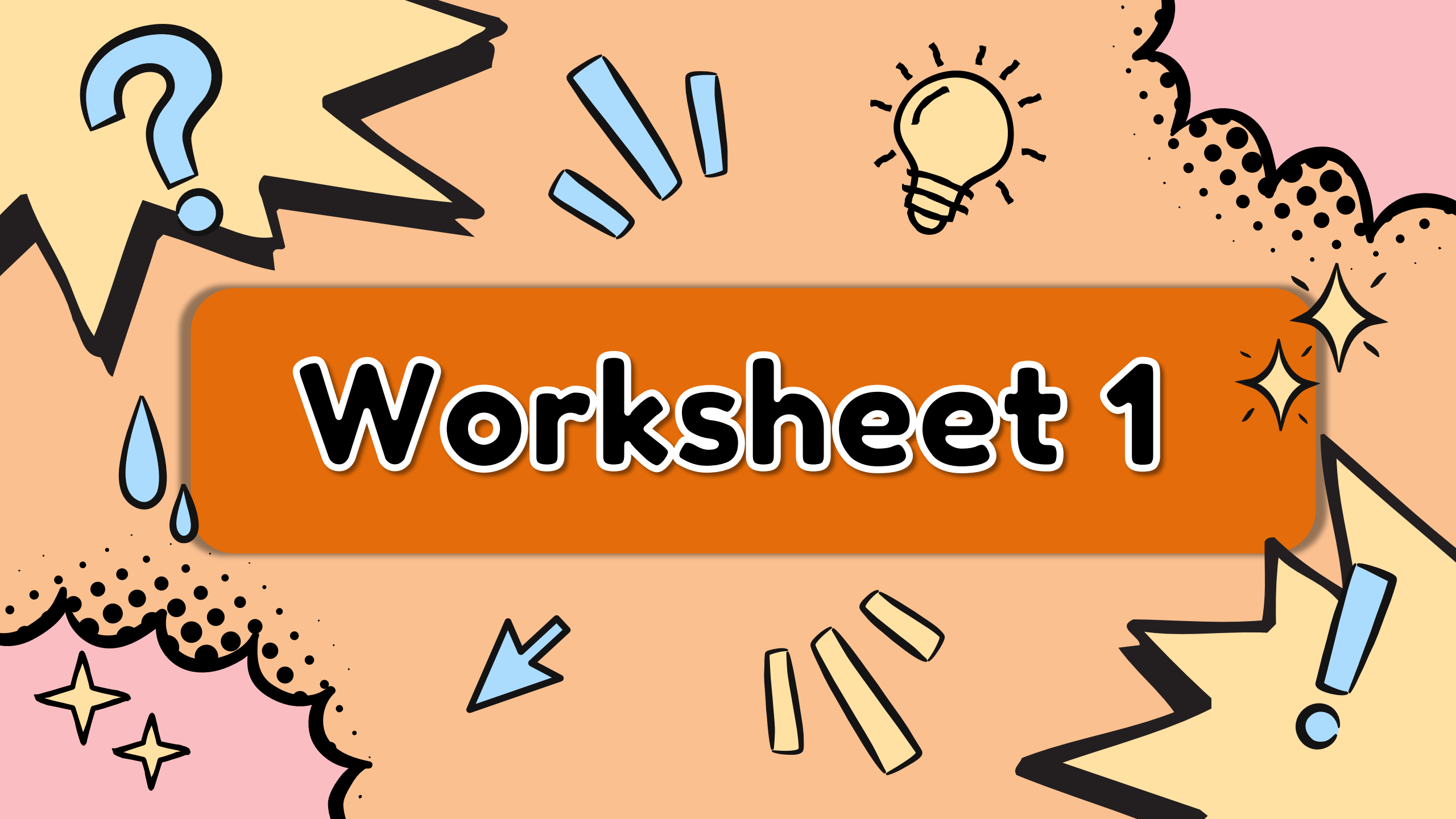


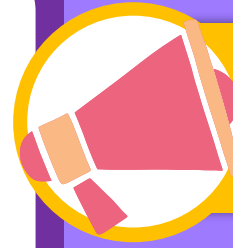
B

I rarely use a wireless  
keyboard .

25%

# Worksheet 1





# Worksheet 1

1. My brother \_\_\_\_\_ (rarely ever / help) me with my homework.
2. You and Tony \_\_\_\_\_ (never / play) computer games with me.
3. You \_\_\_\_\_ (usually / be) at the sports center on Sunday.
4. The school bus \_\_\_\_\_ (always / arrive) at half past eight.
5. I \_\_\_\_\_ (often / clean) my bedroom at the weekend.
6. I \_\_\_\_\_ (seldom / eat) meat.
7. He \_\_\_\_\_ (sometimes / read) the local newspaper.
8. She \_\_\_\_\_ (always / complain) about her husband. (always)
9. I \_\_\_\_\_ (sometimes / drink) coffee for breakfast.
10. Frank \_\_\_\_\_ (often / be) ill.

## Directions:

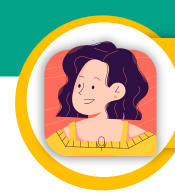
**Rewrite the complete sentence using the adverb of frequency in brackets in its correct position.**







1. My brother **rarely ever help** \_\_\_\_\_ (rarely ever / help) me with my homework.
2. You and Tony **never play** \_\_\_\_\_ (never / play) computer games with me.
3. You **are usually** \_\_\_\_\_ (usually / be) at the sports center on Sunday.
4. The school bus **always arrives** \_\_\_\_\_ (always / arrive) at half past eight.
5. I **often clean** \_\_\_\_\_ (often / clean) my bedroom at the weekend.



6. I **seldom eat** \_\_\_\_\_ (seldom / eat) meat.

7. He **sometimes reads** \_\_\_\_\_ (sometimes / read)  
the local newspaper.

8. She **always complains** \_\_\_\_\_ (always / complain)  
about her husband.

9. I **sometimes drink** \_\_\_\_\_ (sometimes / drink) coffee  
for breakfast.

10. Frank **is often** \_\_\_\_\_ (often / be) ill.



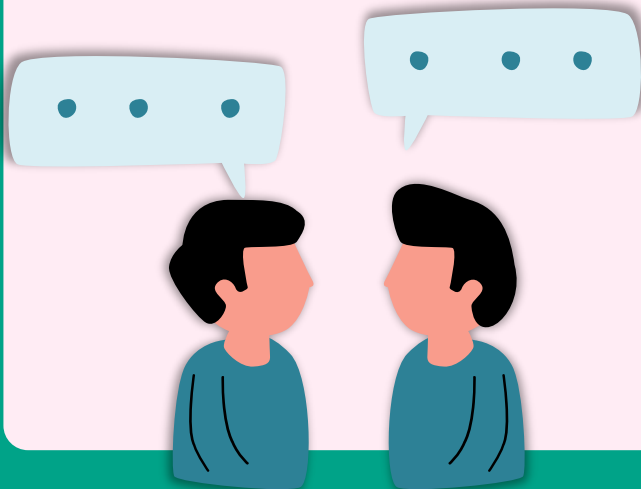
# Worksheet 2

# Worksheet 2

**Direction: Work with partner then use the following questions to survey the class reflection of the device usage.**

**1**

**Find a partner**



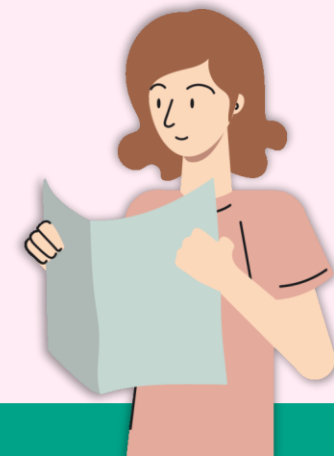
**2**

**Ask and answer**



**3**

**Write the information**



You may use the following questions to ask your friends

1. Q: Have you ever used \_\_\_\_\_.

1.1 Ans: Yes, sometimes I use it when I am on vacation.

1.2 Ans: No, I's never used it.

2. Q: How often do you use \_\_\_\_\_.

2.1 Ans: I often use \_\_\_\_\_ on the way home.

2.2 Ans: No, I

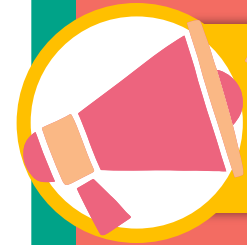
List of the gadgets

1. \_\_\_\_\_

2. \_\_\_\_\_

3. \_\_\_\_\_

No.	Name	Frequency of using	Device
1			
2			
3			
4			
5			
6			
7			
8			
9			
10			



## Worksheet 2

### Directions:

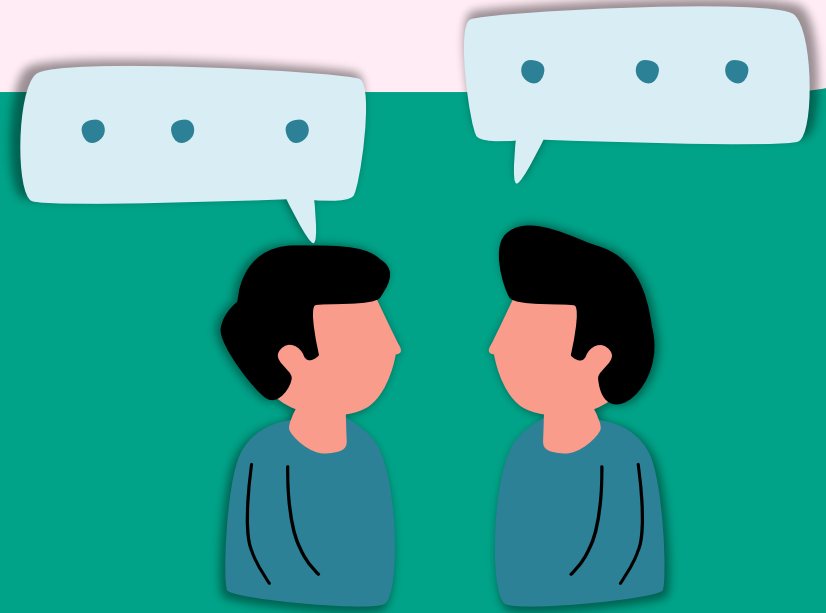
**Work with pair then use the following questions to survey the class reflection of the device usage.**



1. Q: Have you ever used a power bank ?

Yes, sometimes I use it when I am on vacation.

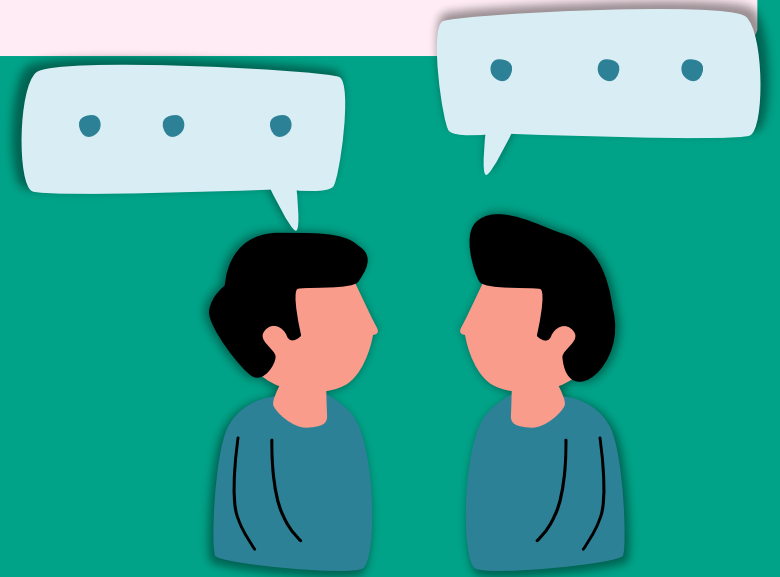
No, I's never used it.



2. Q: How often do you use **a power bank** ?

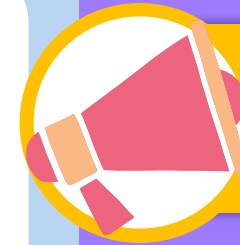
I **often** use **a power bank** on the way home.

I never.



No.	Name	Frequency of using	Device
1	Nink	always	smartphone
2	Game	often	power bank
3			
4			
5			

1. Nink always uses a smartphone.
2. Game often uses a power bank.



## Worksheet 2

### Directions:

Work with pair then use the following questions to survey the class reflection of the device usage.





# Presentation



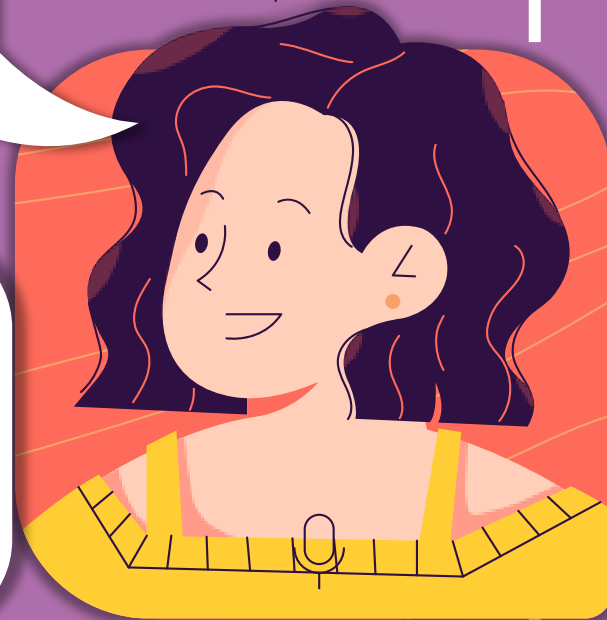


**Wrap Up!**



How often do you use  
a power bank ?

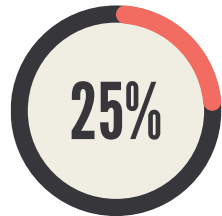
I **often** use a power  
bank on the way home.



# Adverbs of frequency



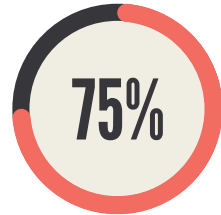
**never**



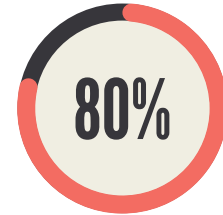
**rarely**



**sometimes**



**often**



**usually**



**always**



Adverbs of frequency come...

- **After** the verb "be."
- **Before** the other verbs.

บทเรียนครั้งต่อไป

# Gadgets I Need

สิ่งที่ต้องเตรียม

1. ใบงานที่ 1 เรื่อง Gadgets in daily life 1
2. ใบงานที่ 2 เรื่อง What are these gadgets?

 (สามารถดาวน์โหลดได้ที่ [www.dltv.ac.th](http://www.dltv.ac.th))



**“Television is a device that permits people who haven't anything to do to watch people who can't do anything.”**

**-Fred Allen-  
American comedian**

