

รายวิชา ภาษาอังกฤษ

รหัสวิชา อ22102

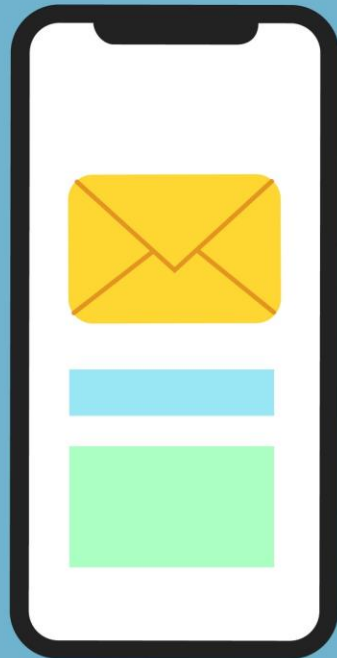
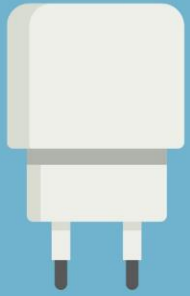
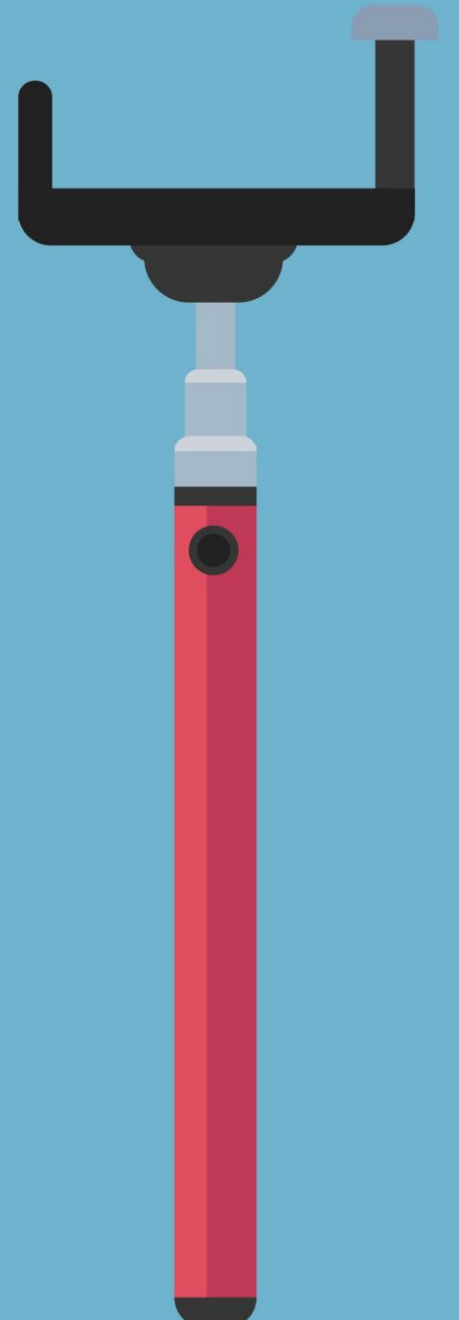
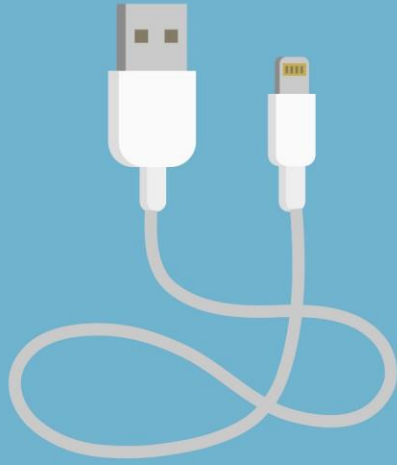
ชั้นมัธยมศึกษาปีที่ 2

Use of Gadgets

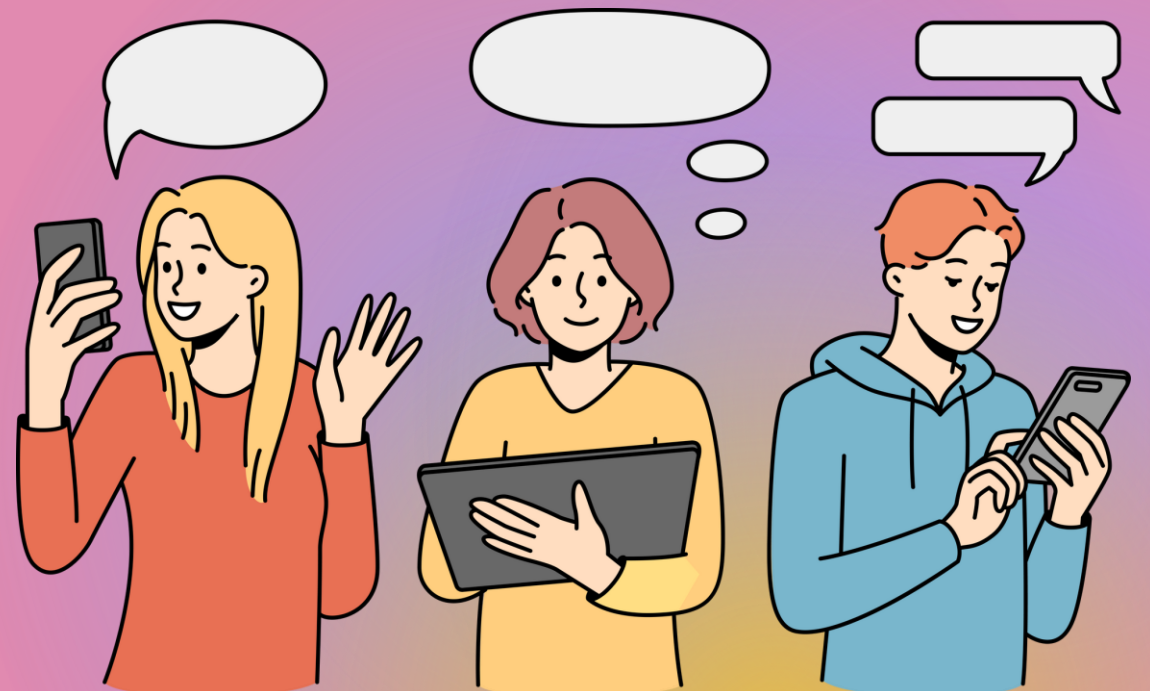
ครูผู้สอน ครูสรวรยา อุตพรหม

ครูศุภณัฐ รักพงษ์





**I'm looking for my watch.
It is smarter than others.**





I'm looking for my
smartwatch **which** is
smarter than others.



Can you find?



A



B



C



D

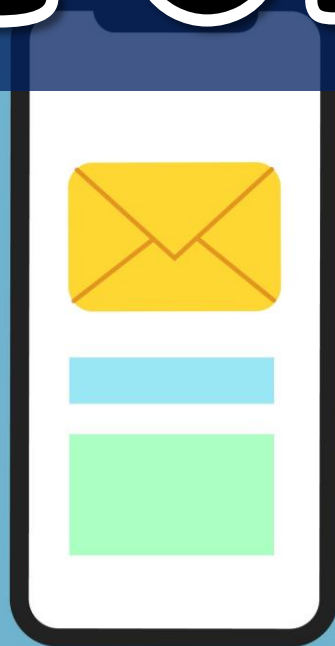


Which one of these is my watch?





Use of Gadgets



จุดประสงค์การเรียนรู้

1. พูดยุทธศาสตร์เปรียบเทียบภาพสิ่งของในอดีตกับปัจจุบันได้
2. เขียนนำเสนอรูปแบบหรือความเปลี่ยนแปลงของสิ่งของในอนาคตตามจินตนาการได้





Miming Game



Guess the words from the action.

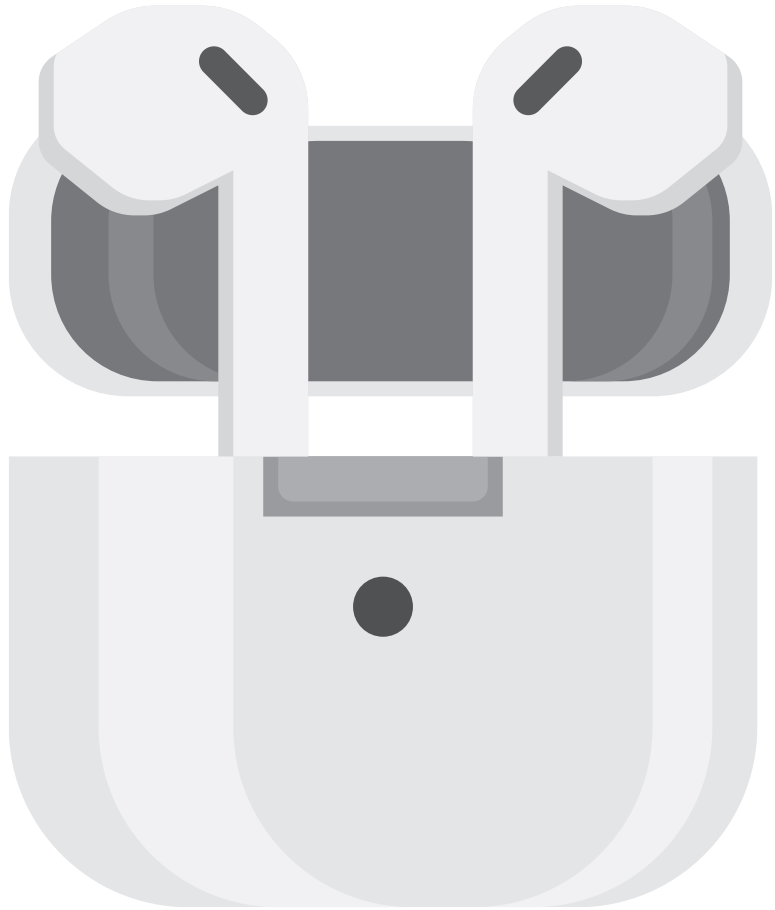
smart watch (n.)



floppy disk (n.)



earbuds (n.)



landline (n.)



thumb drive (n.)



cassette tape (n.)



typewriter (n.)



Check Your Memory



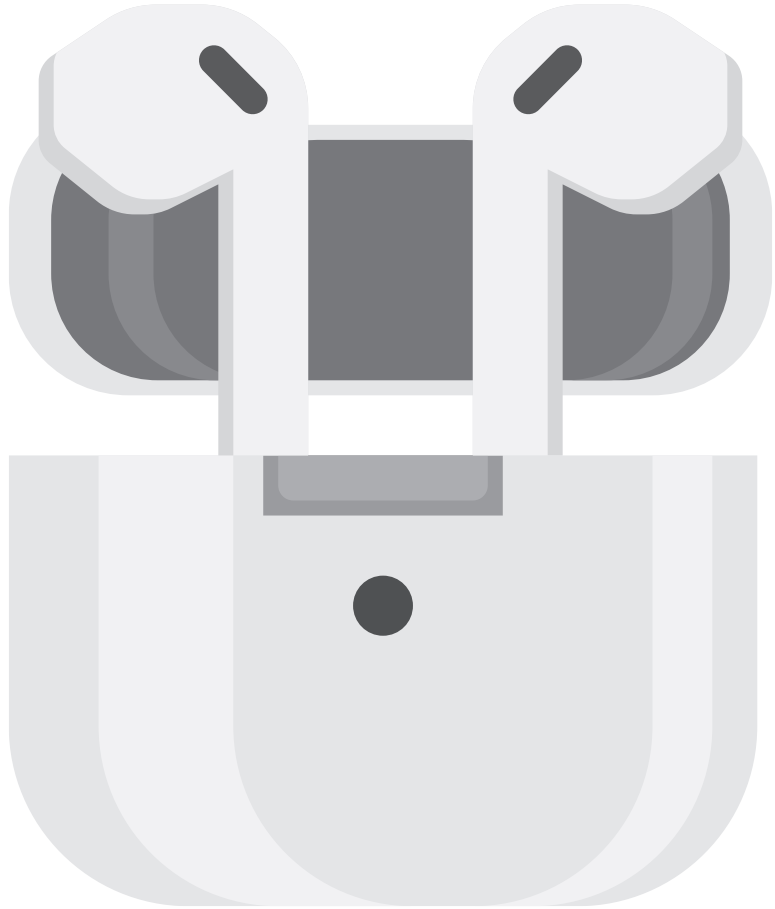
smart watch (n.)



floppy disk (n.)



earbuds (n.)



thumb drive (n.)



landline (n.)



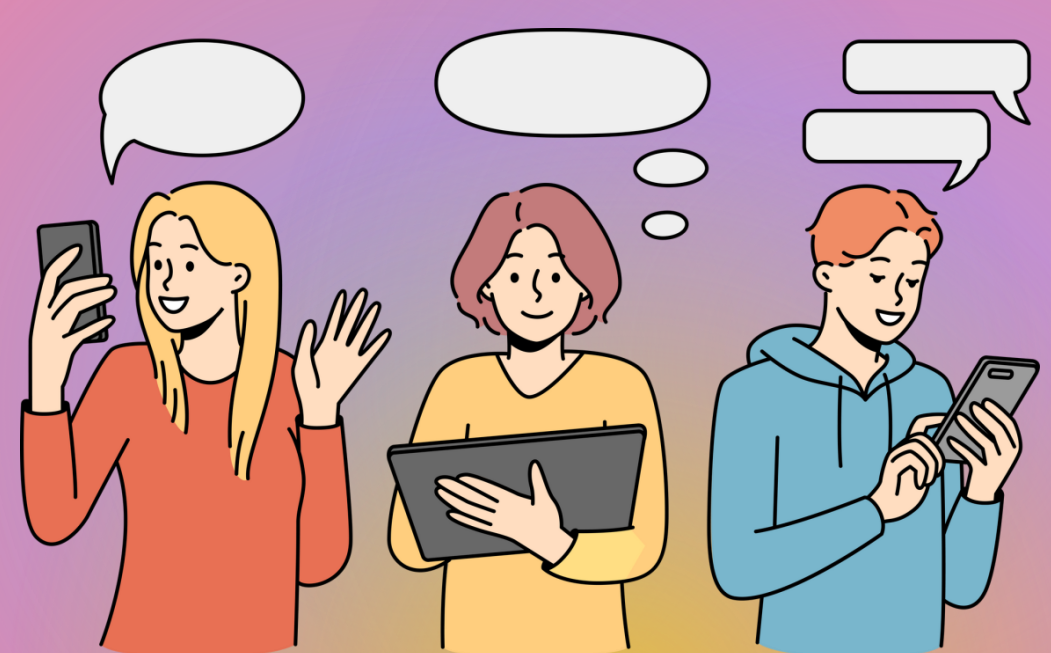
cassette tape (n.)



typewriter (n.)



**I'm looking for my watch .
It is smarter than others.**





I'm looking for my watch
which/that is smarter
than others.



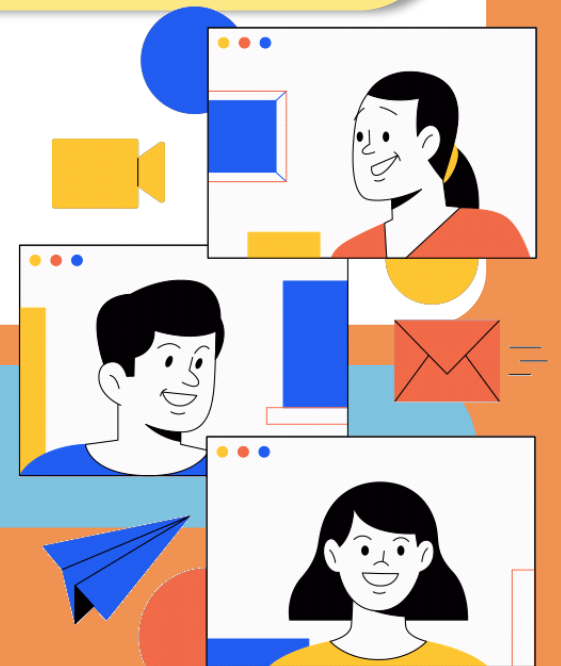


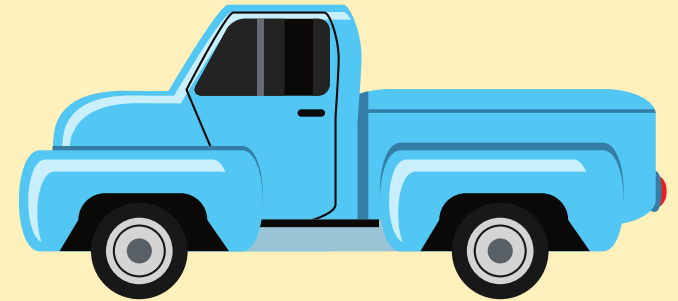
which

animal , object, or ideas

that

people, animal or object





Ex.

I like cars **which** are expensive.

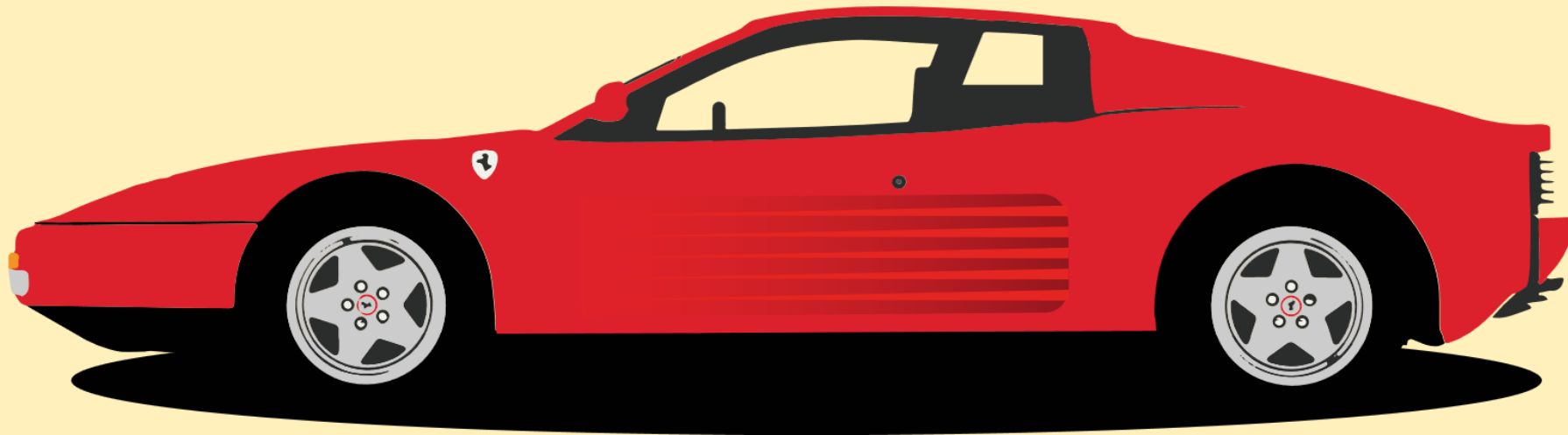
I like cars **that** are expensive.



Ex.

Our house that has a yellow door and white windows needs painting.

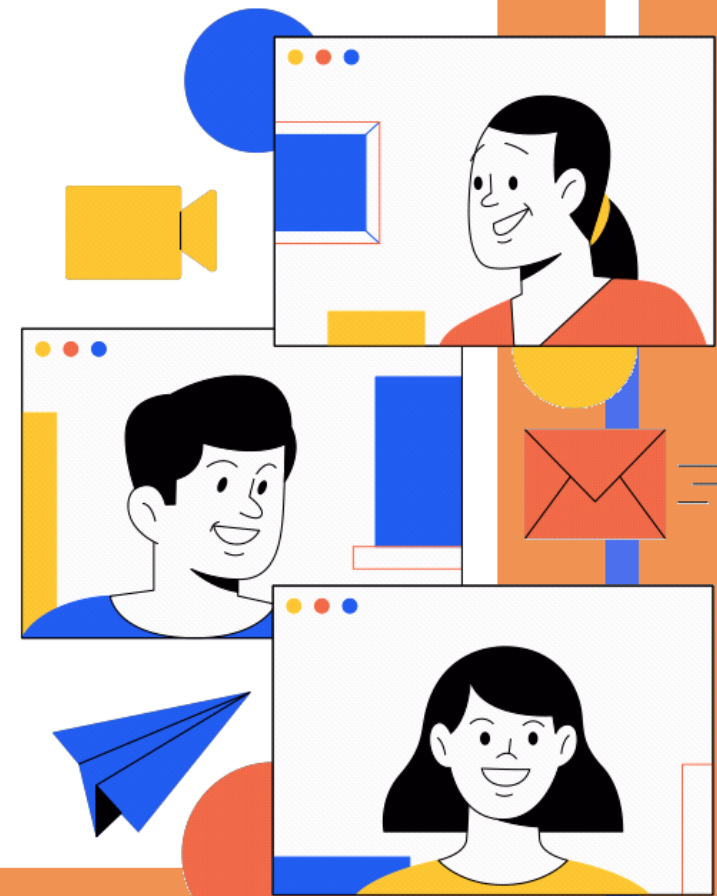
Our house, which has a yellow door and white windows, needs painting.



Ex.

I like Ferrari's cars, **which are
expensive.**

Relative Clauses





Relative Clauses

Defining relative clauses

Give us **essential information** about subject or an object of the main clause.

My bike **that** has a broken seat is in the garage.

Non-defining relative clauses

Give us **extra information** about a subject or an object of the main clause.

My bike, **which** has a broken seat, is in the garage.

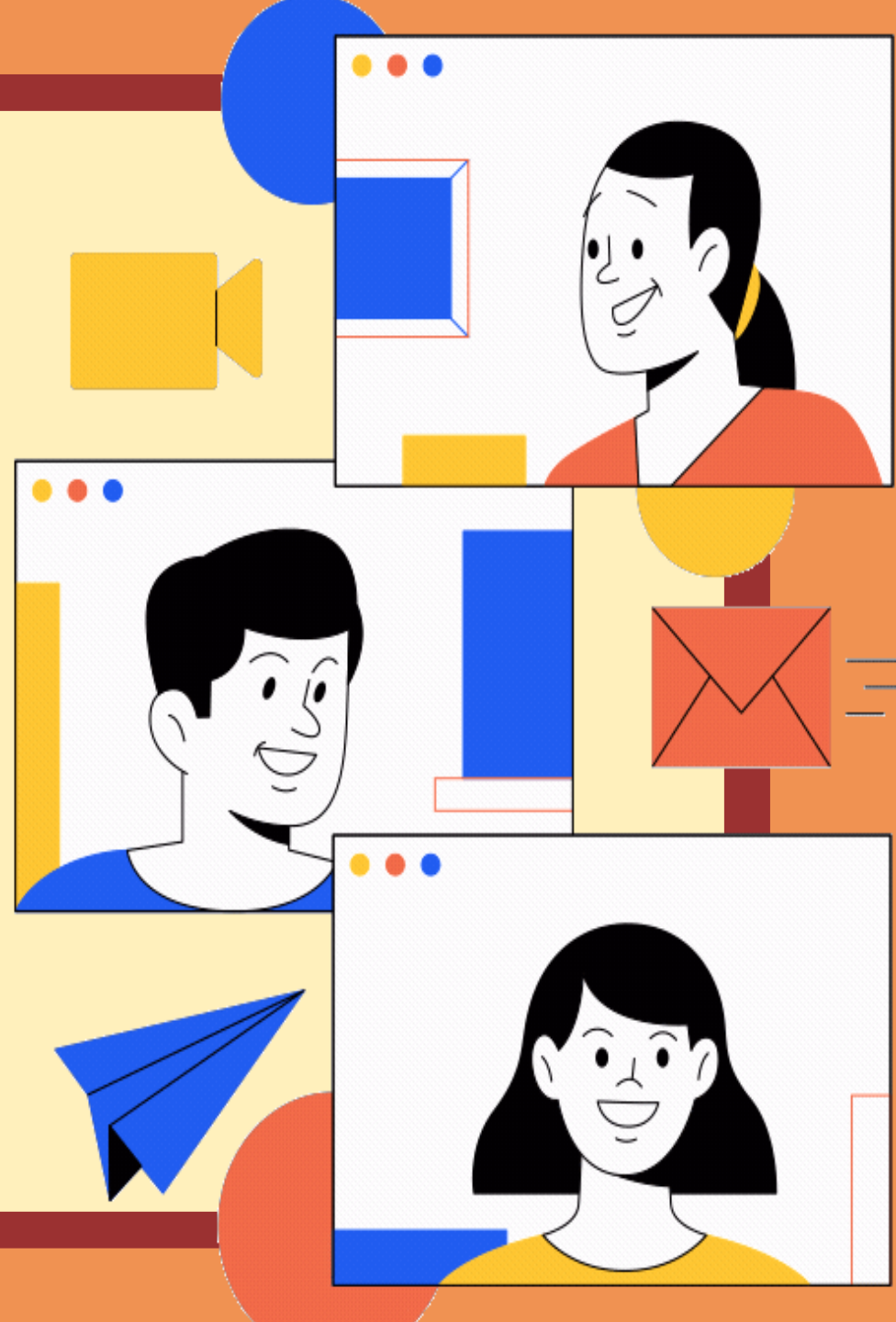


The smart watch which/that is smarter than the analog watch is expensive.



The smart phone that is used by many people is smarter than the landline.

Let's practice

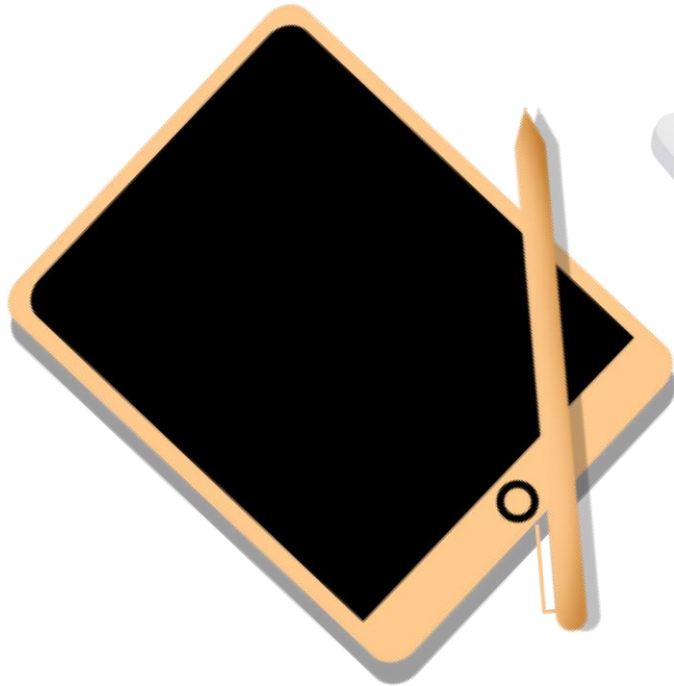




The typewriter, which is older than the computer, is intelligent.



The flash drive, **which can differ depending on the type of computer that you want to connect to.**



The tablet, **which** is called i-Pad is more expensive than others.

Worksheet 1





1) watch vs smart watch



2) landline vs smartphone



3) typewriter vs computer



4) floppy disk vs flash drive



5) laptop vs tablet

The smart watch is smarter than the analog watch.

The smart watch _____ is smarter than the analog watch is expensive.

The smart phone is smarter than the landline.

The smart phone _____ is smarter than the landline.

Computer is more expensive than typewriter.

The computer _____ is more various function than the typewriter.

The flash drive is more capable storage data than the floppy disk.

The flash drive, _____ can differ depending on the type of computer that you want to connect to.

The tablet is more convenient usage than the laptop.

The apple tablet, _____ is called I-Pad is more expensive than others.



Worksheet 1

Directions:
Complete the sentences below by using 'that' or 'which' as relative clause.



1

The smart watch is **smarter** than the analog watch.



The smart watch which/that is smarter than the analog watch is original.

2

The smart phone is **smarter** than the landline.



The smart phone that is used by many people is smarter than the landline.

3

Computer is **more expensive** than typewriter.



The computer that is functional is
More expensive than the typewriter.

The flash drive is more **capable** storage data than the floppy disk.



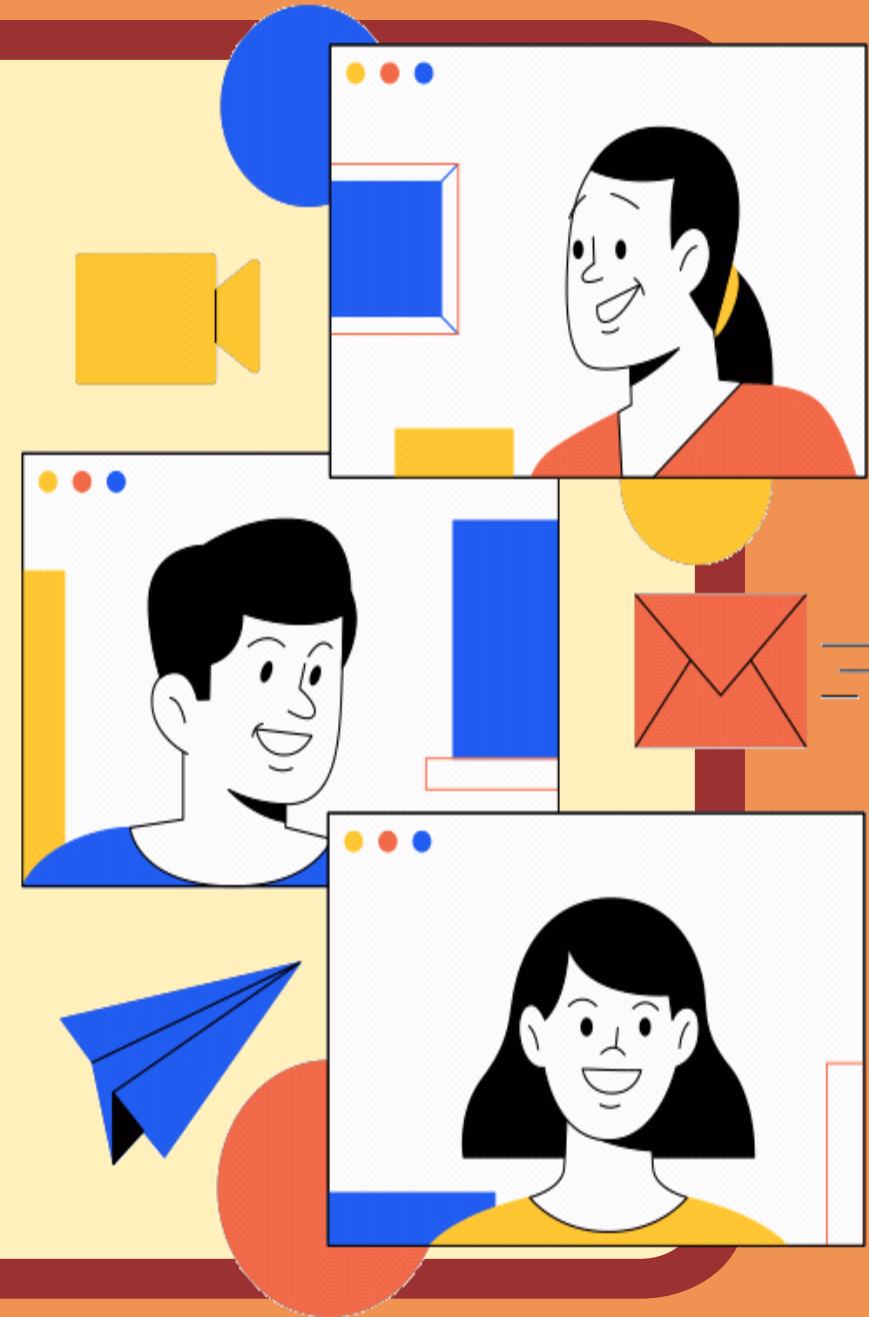
The thumb drive **which** is easier to use than the floppy disk can differ depending on the type of computer that you want to connect to.

The tablet is more **convenient** usage than the laptop.



The tablet, which is called i-Pad is more expensive than others.

Wrap it up!





Relative Clauses

Defining relative clauses

Give us **essential information** about subject or an object of the main clause.

My bike **that** has a broken seat is in the garage.

Non-defining relative clauses

Give us **extra information** about a subject or an object of the main clause.

My bike, **which** has a broken seat, is in the garage.

บทเรียนครั้งต่อไป

Have You Ever Used Any Kind of Devices?

สิ่งที่ต้องเตรียม

ใบงานที่ 1-2 เรื่อง Important Stuffs in My Life

 (สามารถดาวน์โหลดได้ที่ www.dltv.ac.th)



A collage of technology including a smartphone, a tablet, and a laptop keyboard. The background is a soft-focus image of various electronic devices. In the foreground, a white laptop keyboard is visible on the left and bottom, and a silver laptop keyboard is on the right. A gold smartphone is on the left, and a tablet with a blue screen is at the top. The text is overlaid on a white rectangular background in the center.

“For a homebody like me, the evolution of gadgets has been a blessing.”

- Okky Madasari-
(Indonesian novelist and academic,)