

รายวิชา ภาษาอังกฤษ

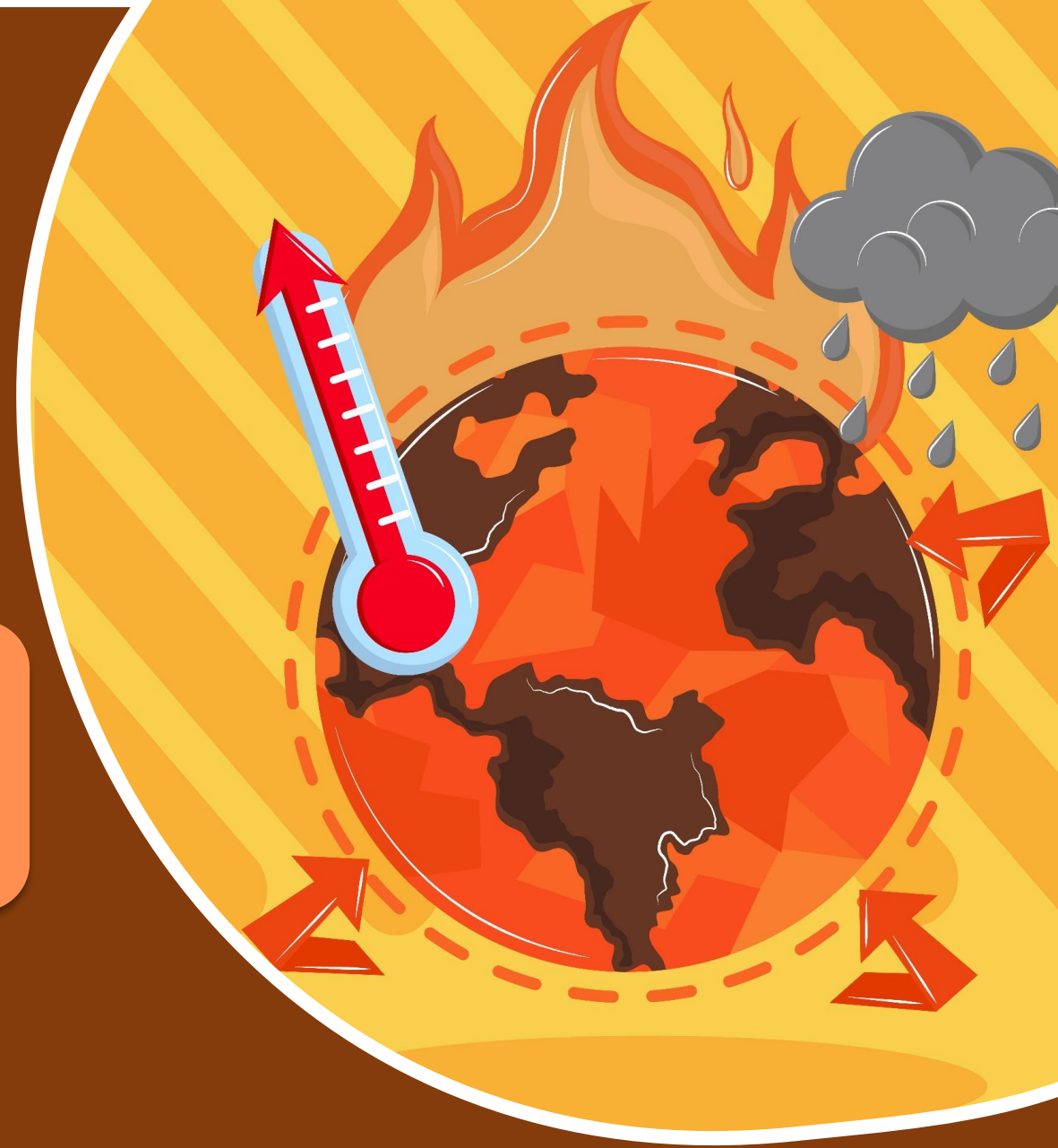
รหัสวิชา อ22102

ชั้นมัธยมศึกษาปีที่ 2

# Global Warming

ครูผู้สอน ครูสรวรยา อุดรพรหม

ครูศุภณัฐ รักพงษ์



1	2	3
4	5	6
7	8	9

# Jigsaw









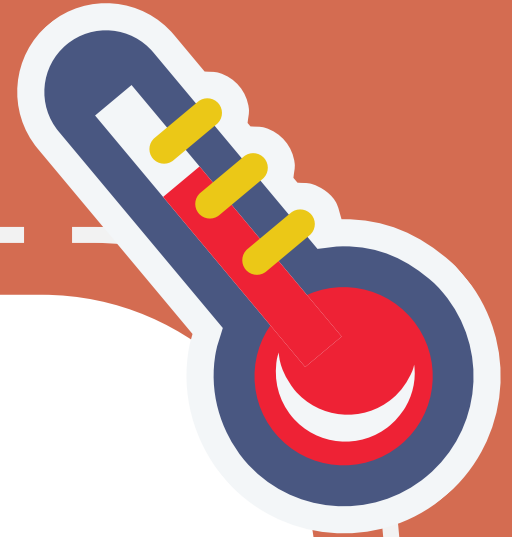


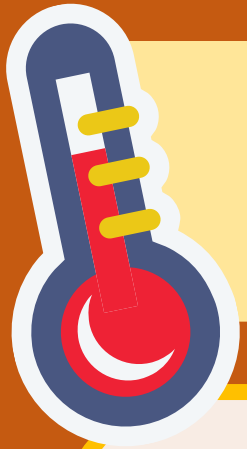






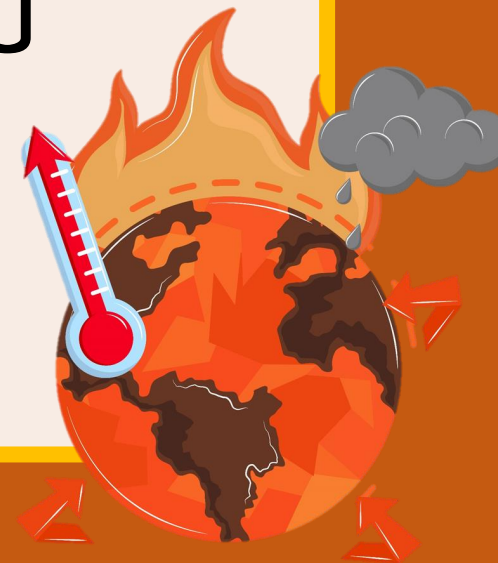
# Global Warming





# จุดประสงค์การเรียนรู้

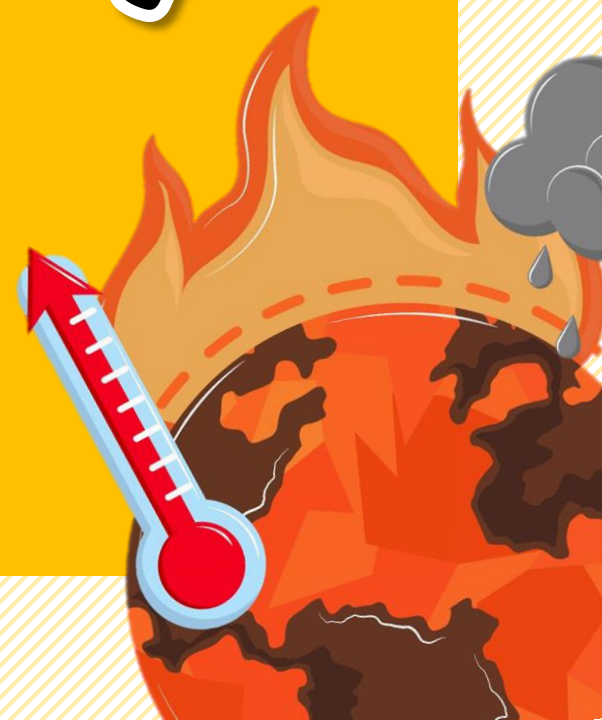
1. ออกเสียงคำศัพท์เกี่ยวกับภาวะโลกร้อนได้
2. เขียนประโยคแสดงความคิดเห็นเกี่ยวกับภาวะโลกร้อนได้





# Vocabulary

**Please note**





# global warming (n.)

the process of **making**  
air, water, soil, etc.  
**dirty**

Ex. Greenhouse gases are the most  
significant factor causing **global**  
**warming.**



# temperature (n.)

**a measure** of how hot  
or cold a place

**Ex.** The earth's **temperature** is  
increasing.





**greenhouse gas (n.)**

**gases in Earth's  
atmosphere that trap  
heat**

**Ex. Greenhouse gases are the most  
significant factor causing global  
warming.**



# **fossil fuel (n.)**

**a fuel formed in the earth from plant or animal remains**

**Ex. These fossil fuels are burnt in power stations.**





# increase (v.)

to become or **make**  
something **larger** or  
**greater**

Ex. The earth's temperature is  
**increasing.**



# atmosphere (n.)

the whole **mass** of air  
surrounding the earth

Ex. The **atmosphere** is being  
polluted.





# endanger (adj.)

(of a species) seriously  
at **risk of extinction.**

**Ex. Animal species are becoming  
endangered.**



# pollution (n.)

the process of **making**  
air, water, soil, etc.  
**dirty**

Ex. **Pollution** becomes a serious  
problem.





# deforestation (n.)

the **cutting down** or burning of trees in an area **without replacing** the trees

Ex. Many animals are losing their natural habitats because of **deforestation**.



# habitat (n.)

the **natural home** or  
**environment of an**  
**animal, plant**

Ex. A lot of animals lose their  
**habitat.**





Greenhouse gases are the biggest factor to cause global warming. Many of them occur because of human activities, so the earth's temperature is increasing. Here are just a few examples of how humans make this increase:

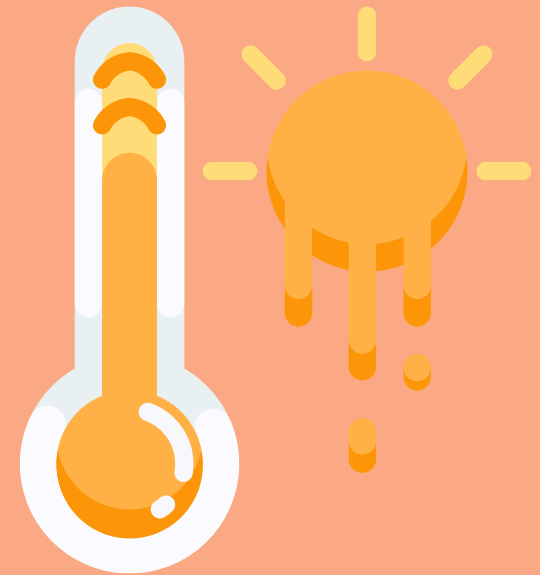
1. Pollution - Fossil fuels such as coal, gas and oil are used to make electricity and run cars. These fossil fuels are burnt in power stations, **so** carbon dioxide is released in the air. Carbon dioxide is a greenhouse gas and it's very harmful to the environment.
2. Deforestation - Huge areas of trees are being cut down **because of** different reasons, such as using the wood for fuel, building houses or factories. This leads to global warming **because** there are fewer trees left to absorb carbon dioxide in the air.
3. Water Vapour - Most water vapour ends up in the atmosphere in a natural way - for example, when water evaporates from the oceans and seas. However, some human activities such as power plant cooling and flying can lead to the creation of this greenhouse gas as well.

These are just a few of the many causes of global warming. We should understand what we can do to decrease our negative impact on the planet to protect our world. Here are some of the effects of global warming:

1. Ice is melting at the North and South Poles, **so** a lot of animals such as polar bears, seals and penguins lose their habitat.
2. We're experiencing more extreme weather events, including storms, hurricanes and tornadoes. These are dangerous **because** they can injure people.
3. We're starting to experience hotter temperatures and droughts, **so** there will be less water and food for people.
4. Animal species are becoming endangered.



# Handout Global Warming





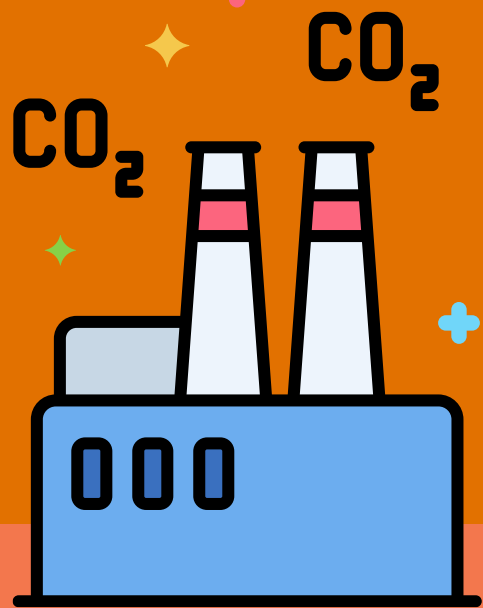
# Global Warming

**Instructions:** Read the passage below and write T if the statement is TRUE and write F if the statement is FALSE.

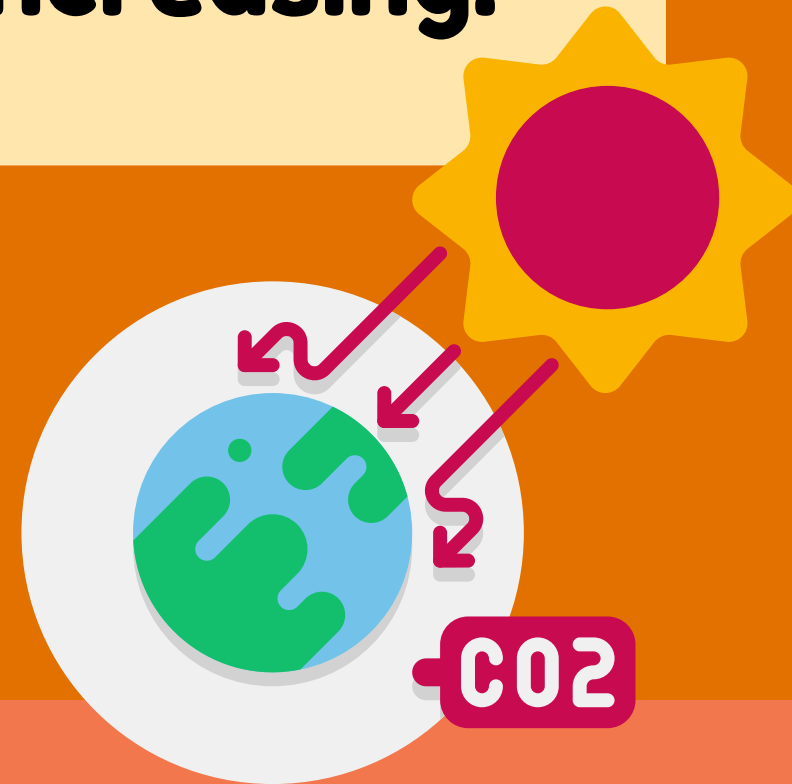




**Greenhouse gases are the most significant factor causing global warming. Many occur because of human activities, so the earth's temperature is increasing.**



$\text{CO}_2$







**Here are just a few examples of how humans make this increase:**





**1. Pollution** - Fossil fuels such as coal, gas, and oil are used to make electricity and run cars. These fossil fuels are burnt in power stations, so carbon dioxide is released into the air. Carbon dioxide is a greenhouse gas and it's very harmful to the environment.





**2. Deforestation** - Huge areas of trees are being cut down because of different reasons, such as using wood for fuel, building houses, or factories. This leads to global warming because there are fewer trees left to absorb carbon dioxide in the air.







**These are just a few of the many causes of global warming. We should understand what we can do to decrease our negative impact on the planet to protect our world. Here are some of the effects of global warming:**





**1. Ice is melting at the North and South Poles, so a lot of animals such as polar bears, seals, and penguins lose their habitat.**





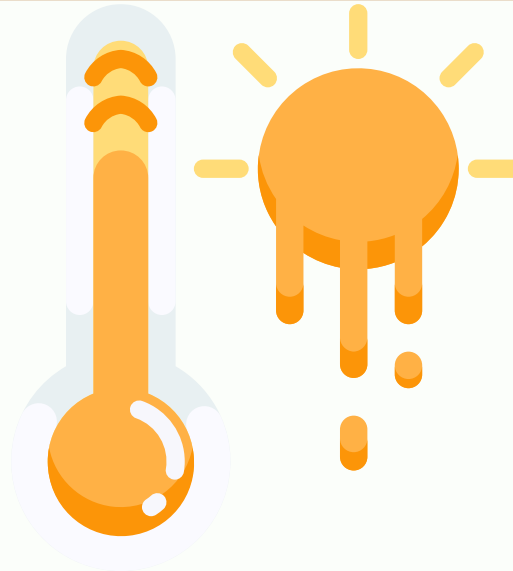
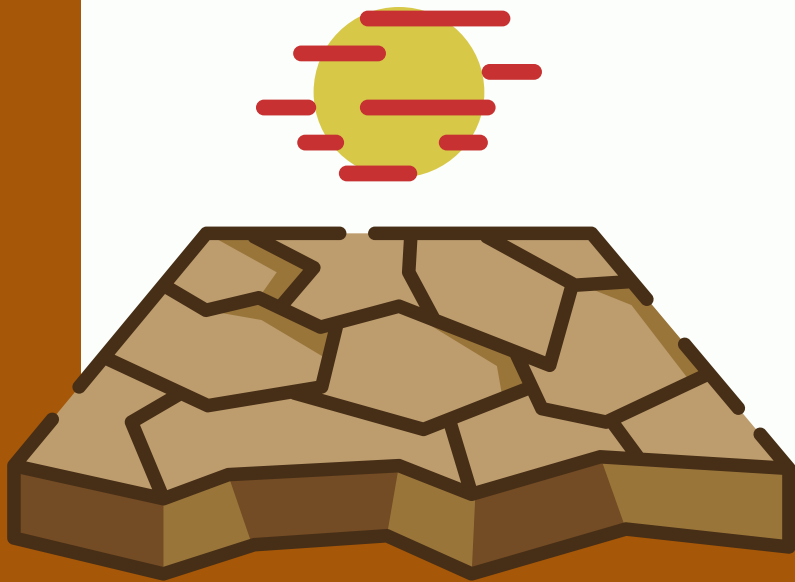
**2. We're experiencing more extreme weather events, including storms, hurricanes, and tornadoes. These are dangerous because they can injure people.**





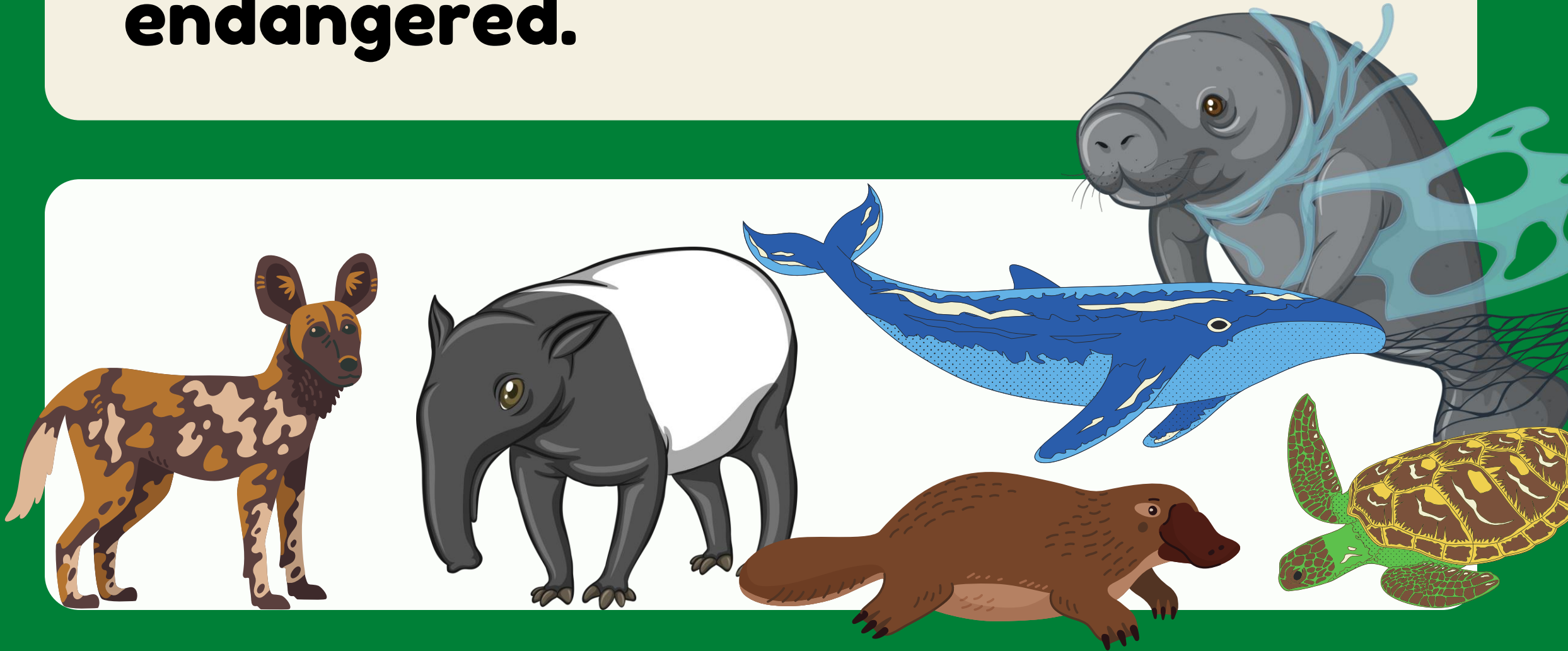


**3. We're starting to experience hotter temperatures and droughts, so there will be less water and food for people.**





# 4. Animal species are becoming endangered.



# Worksheet 1

## Global Warming

Instructions: Write T if the statement is TRUE and write F if the statement is FALSE.

1. Many greenhouse gases occur because of human activities.

2. The temperature of our world is increasing because of the greenhouse gases.

3. Carbon dioxide is not a type of the greenhouse gases.

4. Human cut many trees down, so there are fewer trees left to absorb carbon dioxide

in the air

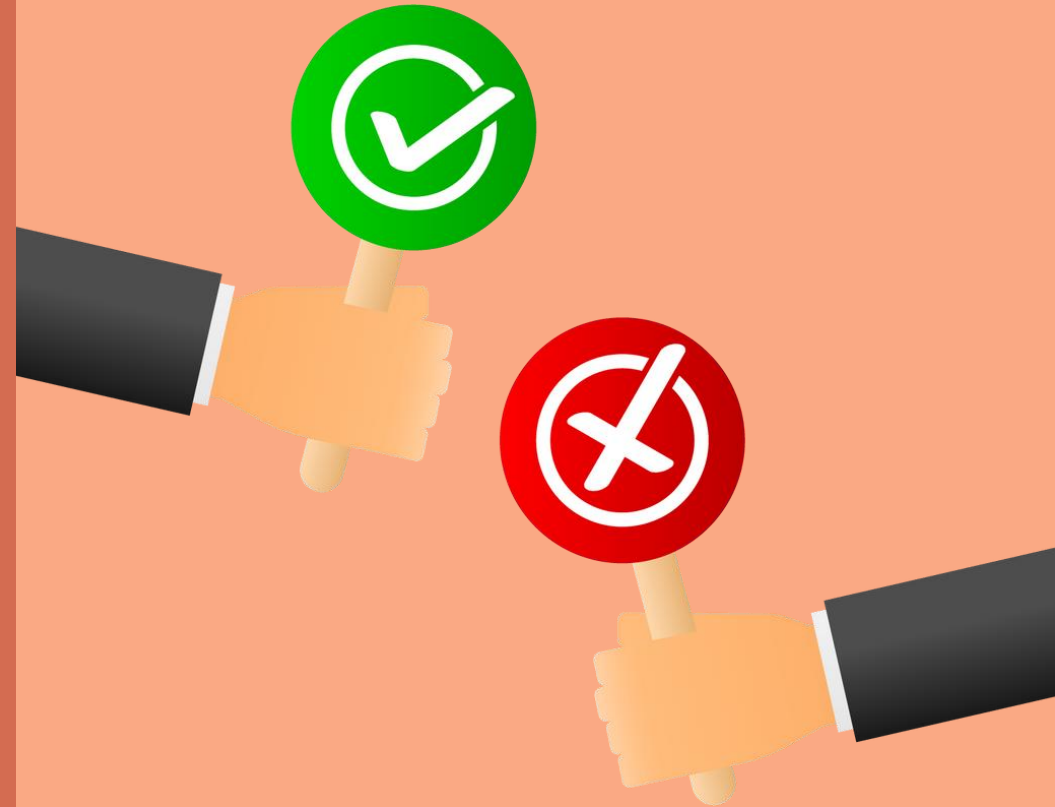
5. Flying doesn't cause greenhouse gases.

6. Ice at the North and South poles is melting, so many animals can enjoy swimming

in the poles.

7. Human will experience more extreme weathers because of global warming crisis.

8. Global warming can make animals endangered.





**1. Many greenhouse gases occur because of human activities.**



**Greenhouse gases are the biggest factor to cause global warming. Many of them occur because of human activities.**

**2. The temperature of our world is increasing because of the greenhouse gases.**



**Because of human activities, so the earth's temperature is increasing.**

**3. Carbon dioxide is not a type of the greenhouse gases.**



**Carbon dioxide is a greenhouse gas and it's very harmful to the environment.**

**4. Human cut many trees down, so there are fewer trees left to absorb carbon dioxide in the air.**



**This leads to global warming because there are fewer trees left to absorb carbon dioxide in the air.**



**5. Flying doesn't  
cause greenhouse  
gases.**



**Power plant cooling  
and flying can lead to  
the creation of this  
greenhouse gas as well.**

**6. Ice at the North and South poles is melting, so many animals can enjoy swimming in the poles.**



**Ice is melting at the North and South Poles, so a lot of animals lose their habitat.**

**7. Human will experience more extreme weathers because of global warming crisis.**



**We're experiencing more extreme weather events, including storms, hurricanes and tornadoes.**

**8. Global warming  
can make animals  
endangered.**



**Animal species are  
becoming endangered.**



**reason**

**Ice is melting at the North and South Poles, so a lot of animals lose their habitat.**

**result**

**reason** → **result**

\*ตามหลังด้วยประโยคที่เป็นเหตุผล

**result**

**This leads to global warming **because** there are fewer trees left to absorb carbon dioxide in the air.**

**reason/cause**

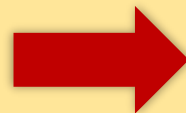
**result** → **reason/  
cause**

\* ตามหลังด้วยประโยคที่เป็นสาเหตุ

**Many greenhouse gases occur because of human activities.**

**noun / noun phrase**

**because of**



**noun /  
noun phrase**



\*ตามหลังด้วยคำนาม (N.) ที่เป็นสาเหตุ

**because of**

**because**

**so**

- The nature is losing its purity because of the pollution.
- Pollution becomes a serious problem so we must act rapidly against it.
- Storms are dangerous because they can injure people



1.



Animal species are becoming endangered because\_\_\_\_\_.

2.



Many trees are being cut down, so \_\_\_\_\_.

3.



Human will experience more and more natural disasters because of\_\_\_\_\_.

4.



Humans burn a lot of fossil fuels to make electricity, so\_\_\_\_\_.



# Worksheet 1

## Global Warming

**Instructions:**  
**Complete the meaningful sentences by showing the appropriate causes or effects.**

# Worksheet 1

## Global Warming



**1. Animal species are becoming endangered because**  
**ice at the North and South poles is melting.**





# Worksheet 1

## Global Warming

**2. Many trees are  
being cut down, so  
many animals lose  
their habitats.**



**3. Humans will  
experience more and  
more natural disasters  
because of  
global warming.**

---

---



# Worksheet 1

## Global Warming







## Worksheet 1

### Global Warming

4. Humans burn a lot of fossil fuels to make electricity, so

carbon dioxide is  
released into the air.





**Wrap it up!**



**reason**

**Ice is melting at the North and South Poles, so a lot of animals lose their habitat.**

**result**

**because**

**reason** → **result**

\*ตามหลังด้วยประโยคที่เป็นเหตุผล

**result**

This leads to global warming **because** there are fewer trees left to absorb carbon dioxide in the air.

**reason**

**because**

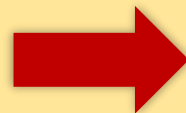
**result** → **reason**

\* ตามหลังด้วยประโยคที่เป็นสาเหตุ

**Many greenhouse gases occur because of human activities.**

**noun / noun phrase**

**because of**



**noun /  
noun phrase**



\*ตามหลังด้วยคำนาม (N.) ที่เป็นสาเหตุ



บทเรียนครั้งต่อไป

# Climate Change Solutions

สิ่งที่ต้องเตรียม

- 1) ใบความรู้ที่ 1 เรื่อง Modals of Suggestions
- 2) ใบงานที่ 1 เรื่อง บทอ่าน Climate Solutions
- 3) ใบงานที่ 2 เรื่อง Put The Ideas in Oder
- 4) ใบงานที่ 3 เรื่อง What Should You Do?



(สามารถดาวน์โหลดได้ที่ [www.dltv.ac.th](http://www.dltv.ac.th))





**Global warming  
isn't a prediction.  
It is happening.**

**James Hansen  
American - Scientist**