

# รายวิชาภาษาอังกฤษ

รหัสวิชา อ16101

ชั้นประถมศึกษาปีที่ 6

เรื่อง **Things in My Classroom (2)**

ครูผู้สอน อัญชลี สุวรรณบุตร

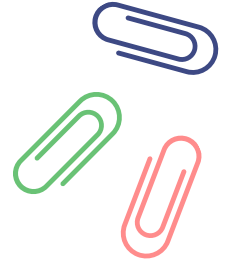


# Things in My Classroom

## (2)

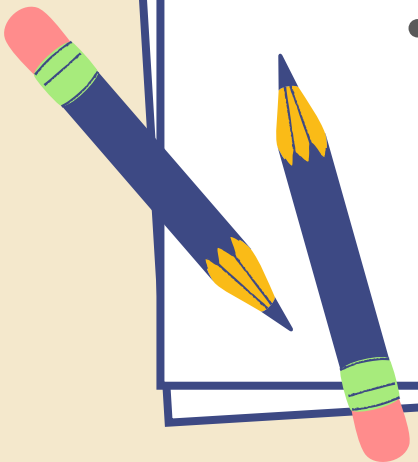


# Objectives



The students can be able to

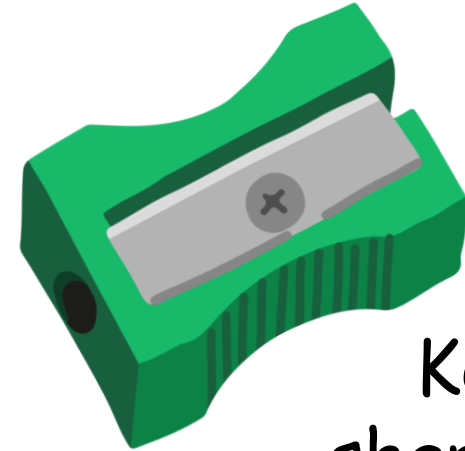
- pronounce and give the meanings of vocabulary words related to possessive form.
- complete the information by using the possessive form correctly.



# Time to learn!; Possessive Form

Pronouns	Possessive Adjective (It is + Possessive Adj. + N.) (They are + Possessive Adj. + <b>Ns</b> )	Possessive Pronouns (It is + Possessive Pron.) (They are + Possessive Pron.)
I		
You		
We		
They		
He		
She		
It		

Time to learn!



Ken's  
sharpener



Whose sharpener is this?

Miss Jane

It's .....**my**.... sharpener.

It's .....**mine**....



Ken

Time to learn!



Jane's  
pencil case



Whose pencil case is this?

Miss Jane

It's ..**your**... pencil case.

It's ..**yours**..



Ken

Time to learn!



Lisa and Mia's  
schoolbags



Whose schoolbags are these?

Miss Jane

They're **their** schoolbags.

They're **theirs** .



Ken

Time to learn!



Whose scissors are these?

Miss Jane



Lisa's scissors

They're ..... **her** ..... scissors.

They're ..... **hers** .....



Ken



Time to learn!

Possessive Adjective

It is **my** book.

Possessive Pronoun

It is **mine.**



# Time to learn! ; Sentence Structures

It is my book.

Noun/Pronoun



Verb  
to be



Possessive  
Adjective



Noun.

It is mine.

Noun/Pronoun

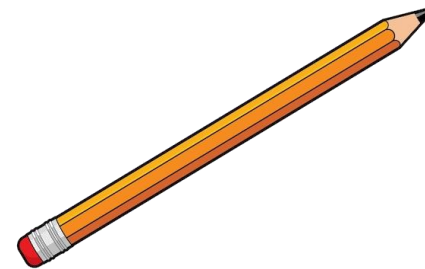


Verb to be



Possessive Pronoun.

Time to practice!



Ken's pencil



Whose pencil is this?

Miss Jane

It's his pencil.



Mia

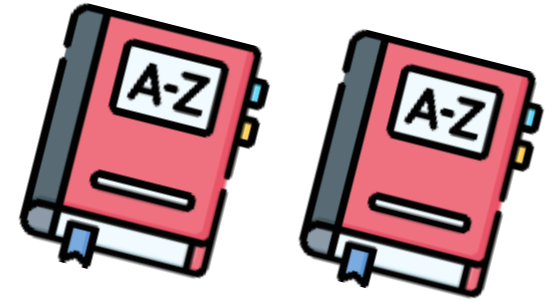
It's his.....

Time to practice!



Ken

Whose dictionaries are these?



Ken and Mia's dictionaries

They're **our** dictionaries.....



Mia

They're **ours**.....

# Talk with your friends!

Lisa is asking Mia who owns these things.



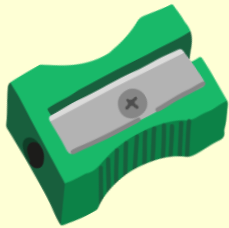
Lisa's scissors



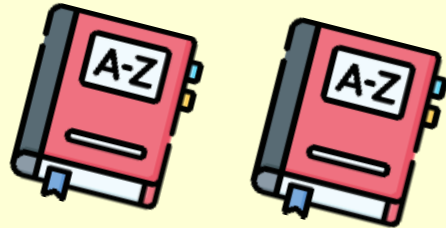
Lisa and Mia's schoolbags

Lisa: Whose ... is this?  
Whose ... are these?

Mia: It's **Adj. + N.** / It's **Pron.**.....  
They're **Adj. + N.** / They're **Pron.**...



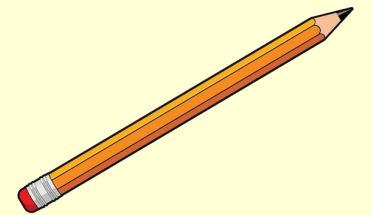
Ken's sharpener



Ken and Henry's dictionaries



Jane's pencil case



Mia's pencil

# Worksheet 6 : Whose is This

**Instructions:**  
Complete the  
sentences.



**Instructions:** Complete the sentences. คำสั่ง: เติมคำลงในช่องว่างให้สมบูรณ์

1

Whose book is this? It's mine.

It's \_\_\_\_\_ book.

ENG

Nina

2

Whose \_\_\_\_\_ is this? It's Ann's schoolbag.

It's \_\_\_\_\_.

Lisa

3

\_\_\_\_\_ pencil case \_\_\_\_\_?

It's yours.

4

Whose pencils are these? They're \_\_\_\_\_ pencils.

They're William's.

Max

5

\_\_\_\_\_ are these? They are \_\_\_\_\_.

They are Cathy and Rose's.

Cathy and Rose

6

Whose sharpeners \_\_\_\_\_? They are ours.

They are \_\_\_\_\_.

Mike and Kate

7

\_\_\_\_\_ are these? They are theirs.

8

\_\_\_\_\_? They're Peter's.

Peter

9

\_\_\_\_\_? They're Maria and Clair's.

Maria/Manee

10

\_\_\_\_\_ his \_\_\_\_\_.

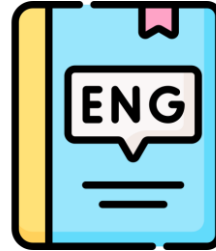
# Worksheet 6

1

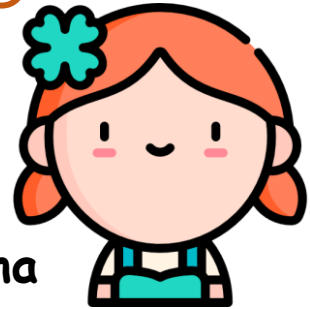


Whose book is this?

It's your book.



It's mine.



Nina

2



Whose schoolbag is this?

It's Ann's schoolbag.



It's hers.



Lisa

# Worksheet 6

3



\_\_\_\_\_ pencil case \_\_\_\_\_ ?

\_\_\_\_\_.



It's yours.



4



Whose pencils are these?

They're \_\_\_\_\_ pencils.

They're  
William's.



Max



# Worksheet 6

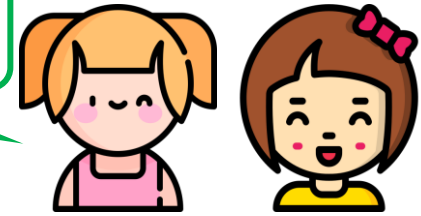
5

\_\_\_\_\_ are these?



They are \_\_\_\_\_.

They are Cathy and Rose's.



Cathy and Rose

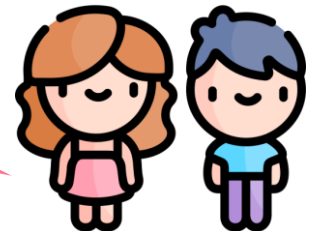
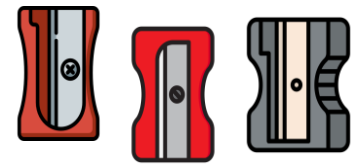
6

Whose sharpeners \_\_\_\_\_ \_\_\_\_\_?



They are ours.

They are \_\_\_\_\_ \_\_\_\_\_.



Mike and Kate

# (Key) Worksheet 6

3

Whose pencil case is this?



It's my pencil case.



It's yours.



4

Whose pencils are these?



They're his pencils.

They're William's.



Max

# (Key) Worksheet 6

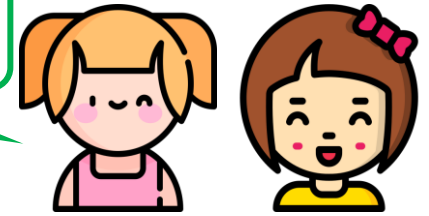
5

Whose books \_\_\_\_\_ are these?



They are ours.

They are Cathy and Rose's.



Cathy and Rose

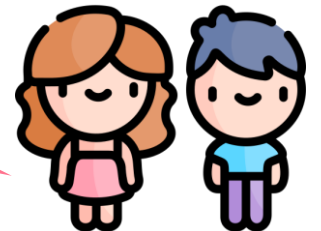
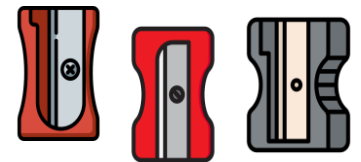
6

Whose sharpeners \_\_\_\_\_ \_\_\_\_\_ ?



They are ours.

They are \_\_\_\_\_ \_\_\_\_\_ .



Mike and Kate

# (Key) Worksheet 6

7



\_\_\_\_\_ are these?

\_\_\_\_\_.



They are theirs.

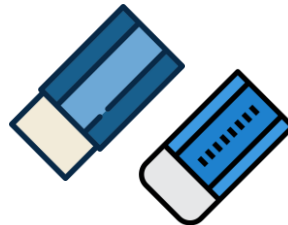


8



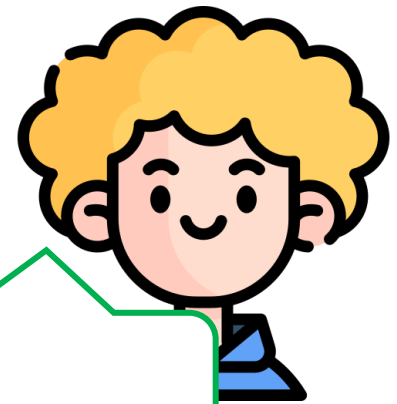
\_\_\_\_\_ ?

They're Peter's.



Peter

\_\_\_\_\_.



# (Key) Worksheet 6

9

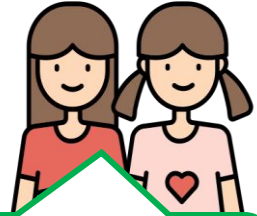


\_\_\_\_\_ ?

They're Maria and Clair's.



Maria/Manee



\_\_\_\_\_.

10



\_\_\_\_\_ ?

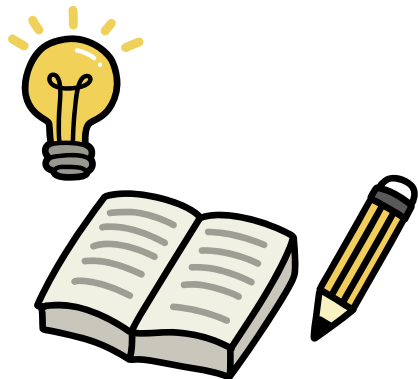
\_\_\_\_\_ his \_\_\_\_\_.



\_\_\_\_\_.

## คำชี้แจงกิจกรรมนักเรียน

นักเรียนทำใบงานที่ 6 เป็นการบ้าน  
จำนวน 5 ข้อ (ข้อที่ 6-10) โดยนำ  
คำที่แสดงความเป็นเจ้าของไปเติม  
ลงในช่องว่างให้ถูกต้อง



## คำชี้แจงบทบาทครูปลายทาง

1. อธิบายคำสั่งในใบงานที่ 6 ให้นักเรียนฟังอีกครั้ง
2. คอยให้ความช่วยเหลือนักเรียนระหว่างทำใบงาน
3. สังเกตและตรวจสอบการเขียนคำศัพท์ และการใช้คำแสดงความเป็นเจ้าของตามที่เรียนของนักเรียนให้ถูกต้อง

## Wrap Up



Ken's  
sharpener

Mark: Whose sharpener is this?

Ken: It's my sharpener. It's mine.

Lisa: Whose schoolbags are these?

Mia: They're our schoolbags. They're ours.



Lisa and Mia's  
schoolbags



# บทเรียนครั้งต่อไป

## Class Rules



### สิ่งที่ต้องเตรียม

1. ใบงานที่ 7 เรื่อง Match It!
2. ใบงานที่ 8 เรื่อง Our Class Rules
3. ใบงานที่ 9 เรื่อง Make Sentences
4. แบบประเมินตนเอง

สามารถดาวน์โหลดได้ที่ [www.dltv.ac.th](http://www.dltv.ac.th)

