

รายวิชา ภาษาอังกฤษ

รหัสวิชา อ21102

ชั้นมัธยมศึกษาปีที่ 1

เรื่อง Understanding Medical Label

ครูผู้สอน

ครูปิ่นปิ่นทร์

แสงจันทร์

ครูชนิษฐา

มาลัยผ่อง



Understanding Medical Label



จุดประสงค์การเรียนรู้

1. อ่านออกเสียงคำศัพท์ที่เกี่ยวข้องกับฉลากยาได้
2. เขียนบอกข้อมูลจากข้อความบนฉลากยาอย่างง่ายได้



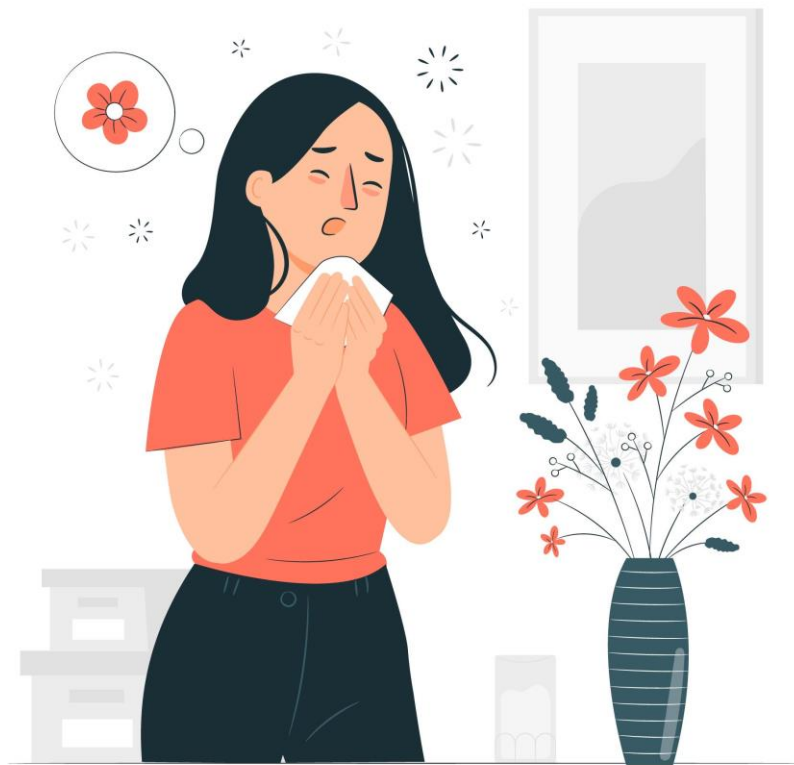


Dictation





runny nose



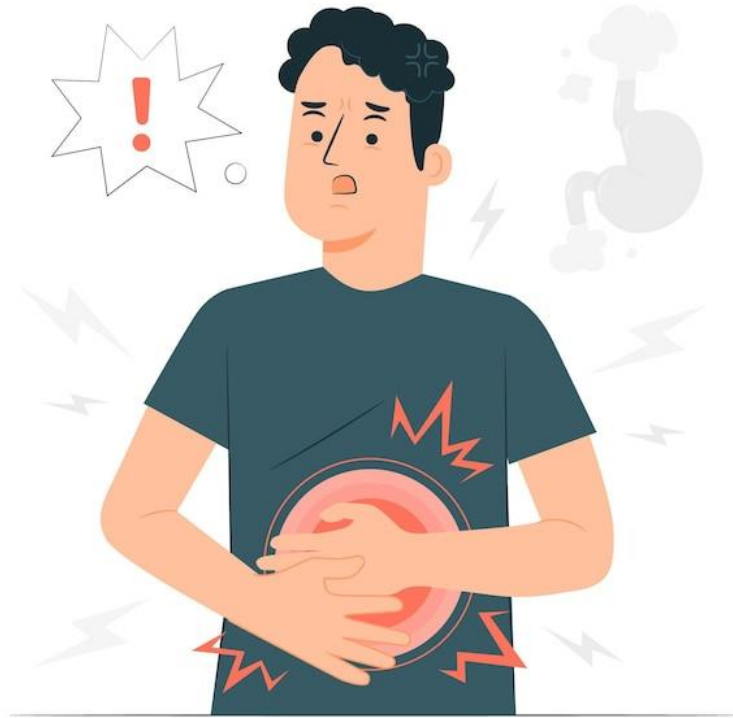
sneezing



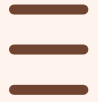
fever



stomachache



diarrhea



Vocabulary



Drug Facts

Active ingredient (in each tablet)

Chlorpheniramine maleate 2 mg.....Antihistamine

Purpose

Uses temporarily relieves these symptoms due to hay fever or other upper respiratory allergies: ■ sneezing ■ runny nose ■ itchy, watery eyes ■ itchy throat

Warnings

Ask a doctor before use if you have

- glaucoma
- a breathing problem such as emphysema or chronic bronchitis
- trouble urinating due to an enlarged prostate gland

Ask a doctor or pharmacist before use if you are taking tranquilizers or sedatives

When using this product

- drowsiness may occur ■ avoid alcoholic drinks
- alcohol, sedatives, and tranquilizers may increase drowsiness
- be careful when driving a motor vehicle or operating machinery
- excitability may occur, especially in children

If pregnant or breast-feeding, ask a health professional before use.

Keep out of reach of children. In case of overdose, get medical help or contact a Poison Control Center right away.

Directions

adults and children 12 years and over	take 2 tablets every 4 to 6 hours; not more than 12 tablets in 24 hours
children 6 years to under 12 years	take 1 tablet every 4 to 6 hours; not more than 6 tablets in 24 hours
children under 6 years	ask a doctor

Drug Facts (continued)

Other information ■ store at 20-25°C (68-77°F) ■ protect from excessive moisture

Inactive ingredients D&C yellow no. 10, lactose, magnesium stearate, microcrystalline cellulose, pregelatinized starch

active ingredient

Drug Facts

Active ingredient (in each tablet)

Chlorpheniramine maleate 2 mg.....Antihistamine

Purpose

Uses temporarily relieves these symptoms due to hay fever or other upper respiratory allergies: ■ sneezing ■ runny nose ■ itchy, watery eyes ■ itchy throat

Warnings

Ask a doctor before use if you have

- glaucoma
- a breathing problem such as emphysema or chronic bronchitis
- trouble urinating due to an enlarged prostate gland

Ask a doctor or pharmacist before use if you are taking tranquilizers or sedatives

When using this product

- drowsiness may occur
- avoid alcoholic drinks
- alcohol, sedatives, and tranquilizers may increase drowsiness
- be careful when driving a motor vehicle or operating machinery
- excitability may occur, especially in children

If pregnant or breast-feeding, ask a health professional before use.

Keep out of reach of children. In case of overdose, get medical help or contact a Poison Control Center right away.

Directions

adults and children 12 years and over	take 2 tablets every 4 to 6 hours; not more than 12 tablets in 24 hours
children 6 years to under 12 years	take 1 tablet every 4 to 6 hours; not more than 6 tablets in 24 hours
children under 6 years	ask a doctor

Drug Facts (continued)

Other information ■ store at 20-25°C (68-77°F) ■ protect from excessive moisture

Inactive ingredients D&C yellow no. 10, lactose, magnesium stearate, microcrystalline cellulose, pregelatinized starch

active ingredient

The main ingredient in a medicine that causes the desired effect of the medicine.



Drug Facts

Active ingredient (in each tablet)	Purpose
Chlorpheniramine maleate 2 mg.....	Antihistamine

Uses temporarily relieves these symptoms due to hay fever or other upper respiratory allergies: ■ sneezing ■ runny nose ■ itchy, watery eyes ■ itchy throat

Warnings

Ask a doctor before use if you have

- glaucoma
- a breathing problem such as emphysema or chronic bronchitis
- trouble urinating due to an enlarged prostate gland

Ask a doctor or pharmacist before use if you are taking tranquilizers or sedatives

When using this product

- drowsiness may occur
- avoid alcoholic drinks
- alcohol, sedatives, and tranquilizers may increase drowsiness
- be careful when driving a motor vehicle or operating machinery
- excitability may occur, especially in children

If pregnant or breast-feeding, ask a health professional before use.

Keep out of reach of children. In case of overdose, get medical help or contact a Poison Control Center right away.

Directions

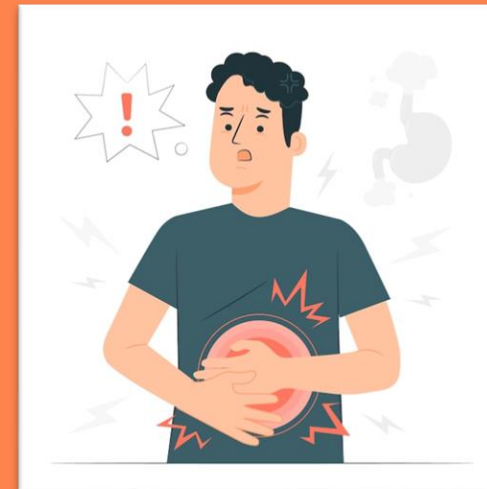
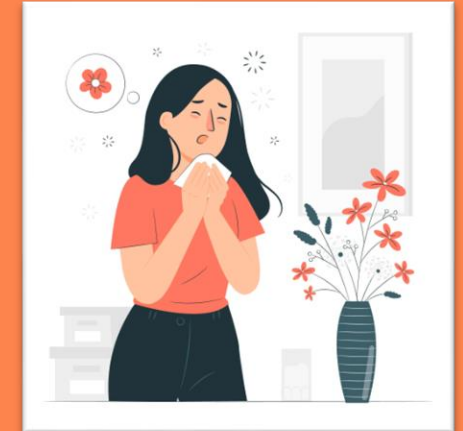
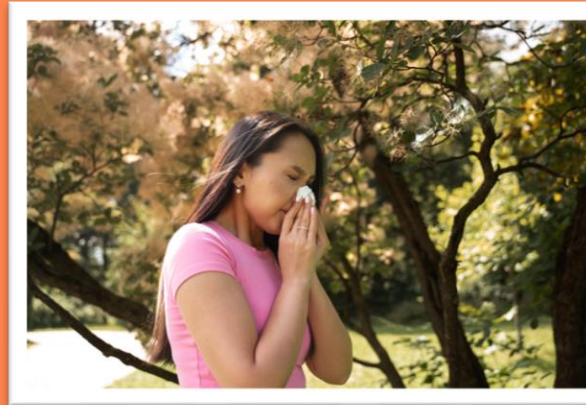
adults and children 12 years and over	take 2 tablets every 4 to 6 hours; not more than 12 tablets in 24 hours
children 6 years to under 12 years	take 1 tablet every 4 to 6 hours; not more than 6 tablets in 24 hours
children under 6 years	ask a doctor

Drug Facts (continued)

Other information ■ store at 20-25°C (68-77°F) ■ protect from excessive moisture

Inactive ingredients D&C yellow no. 10, lactose, magnesium stearate, microcrystalline cellulose, pregelatinized starch

Uses



Drug Facts

Active ingredient (in each tablet)

Chlorpheniramine maleate 2 mg.....Antihistamine

Purpose

Uses temporarily relieves these symptoms due to hay fever or other upper respiratory allergies: ■ sneezing ■ runny nose ■ itchy, watery eyes ■ itchy throat

Warnings

Ask a doctor before use if you have

- glaucoma
- a breathing problem such as emphysema or chronic bronchitis
- trouble urinating due to an enlarged prostate gland

Ask a doctor or pharmacist before use if you are taking tranquilizers or sedatives

When using this product

- drowsiness may occur
- avoid alcoholic drinks
- alcohol, sedatives, and tranquilizers may increase drowsiness
- be careful when driving a motor vehicle or operating machinery
- excitability may occur, especially in children

If pregnant or breast-feeding, ask a health professional before use.

Keep out of reach of children. In case of overdose, get medical help or contact a Poison Control Center right away.

Directions

adults and children 12 years and over	take 2 tablets every 4 to 6 hours; not more than 12 tablets in 24 hours
children 6 years to under 12 years	take 1 tablet every 4 to 6 hours; not more than 6 tablets in 24 hours
children under 6 years	ask a doctor

Drug Facts (continued)

Other information ■ store at 20-25°C (68-77°F) ■ protect from excessive moisture

Inactive ingredients D&C yellow no. 10, lactose, magnesium stearate, microcrystalline cellulose, pregelatinized starch

warning

cautionary advice



Drug Facts

Active ingredient (in each tablet)

Chlorpheniramine maleate 2 mg.....Antihistamine

Purpose

Uses temporarily relieves these symptoms due to hay fever or other upper respiratory allergies: ■ sneezing ■ runny nose ■ itchy, watery eyes ■ itchy throat

Warnings

Ask a doctor before use if you have

- glaucoma
- a breathing problem such as emphysema or chronic bronchitis
- trouble urinating due to an enlarged prostate gland

Ask a doctor or pharmacist before use if you are taking tranquilizers or sedatives

When using this product

- drowsiness may occur
- avoid alcoholic drinks
- alcohol, sedatives, and tranquilizers may increase drowsiness
- be careful when driving a motor vehicle or operating machinery
- excitability may occur, especially in children

If pregnant or breast-feeding, ask a health professional before use.

Keep out of reach of children. In case of overdose, get medical help or contact a Poison Control Center right away.

Directions

adults and children 12 years and over	take 2 tablets every 4 to 6 hours; not more than 12 tablets in 24 hours
children 6 years to under 12 years	take 1 tablet every 4 to 6 hours; not more than 6 tablets in 24 hours
children under 6 years	ask a doctor

Drug Facts (continued)

Other information ■ store at 20-25°C (68-77°F) ■ protect from excessive moisture

Inactive ingredients D&C yellow no. 10, lactose, magnesium stearate, microcrystalline cellulose, pregelatinized starch

directions

the management or guidance of someone or something.



Drug Facts

Active ingredient (in each tablet)	Purpose
Chlorpheniramine maleate 2 mg.....	Antihistamine

Uses temporarily relieves these symptoms due to hay fever or other upper respiratory allergies: ■ sneezing ■ runny nose ■ itchy, watery eyes ■ itchy throat

Warnings

Ask a doctor before use if you have

- glaucoma
- a breathing problem such as emphysema or chronic bronchitis
- trouble urinating due to an enlarged prostate gland

Ask a doctor or pharmacist before use if you are taking tranquilizers or sedatives

When using this product

- drowsiness may occur
- avoid alcoholic drinks
- alcohol, sedatives, and tranquilizers may increase drowsiness
- be careful when driving a motor vehicle or operating machinery
- excitability may occur, especially in children

If pregnant or breast-feeding, ask a health professional before use.

Keep out of reach of children. In case of overdose, get medical help or contact a Poison Control Center right away.

Directions

adults and children 12 years and over	take 2 tablets every 4 to 6 hours; not more than 12 tablets in 24 hours
children 6 years to under 12 years	take 1 tablet every 4 to 6 hours; not more than 6 tablets in 24 hours
children under 6 years	ask a doctor

Drug Facts (continued)

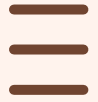
Other information ■ store at 20-25°C (68-77°F) ■ protect from excessive moisture

Inactive ingredients D&C yellow no. 10, lactose, magnesium stearate, microcrystalline cellulose, pregelatinized starch

dosage

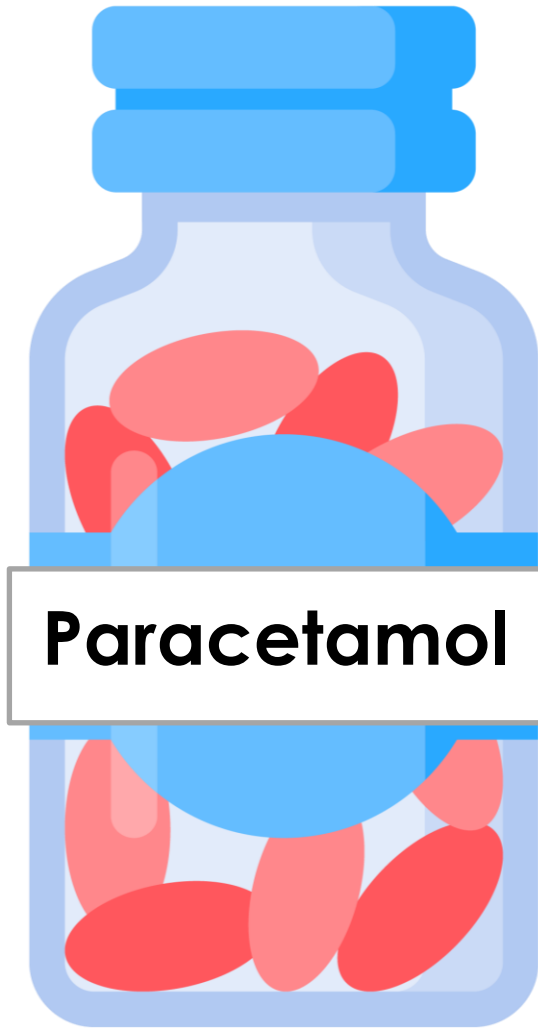
the size or frequency of a dose of a medicine or drug.





Add More Point





FORMULA

Each Tablet Contains:

Paracetamol..... 500 mg.

Phenylephrine HCl..... 10 mg.

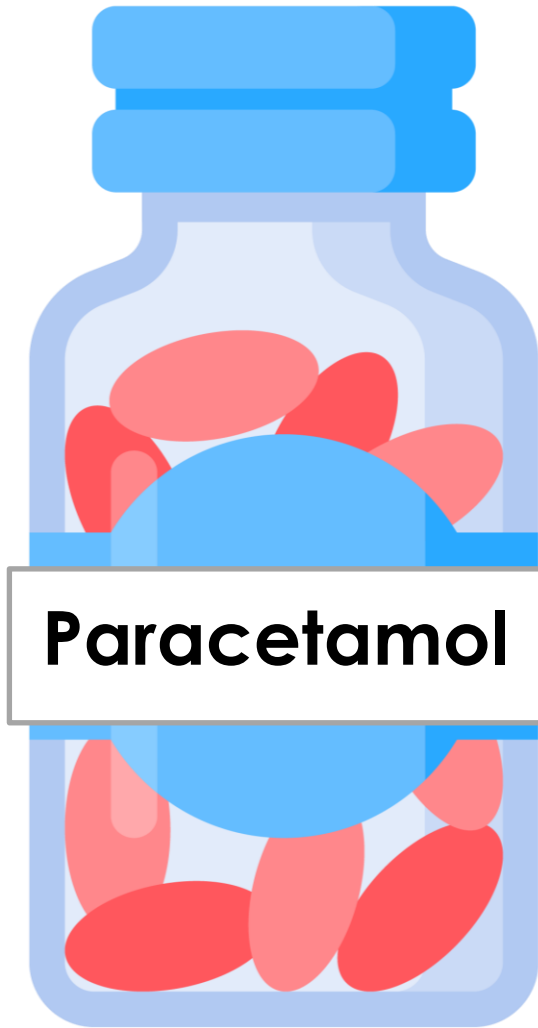
Chlorpheniramine Maleate..... 2 mg.

DOSAGE: Adult: 1 - 2 tablet(s) every 4-6 hours.

Children 12 years: 1 tablet every 4 - 6 hours

SUPPLY: In strip of 4's and 10's

Store at temperature not exceeding 30° c



FORMULA

Each Tablet Contains:

สูตรในยา 1 เม็ดประกอบด้วยตัวยาลำคัญ

Paracetamol..... 500 mg.

Phenylephrine HCl..... 10 mg.

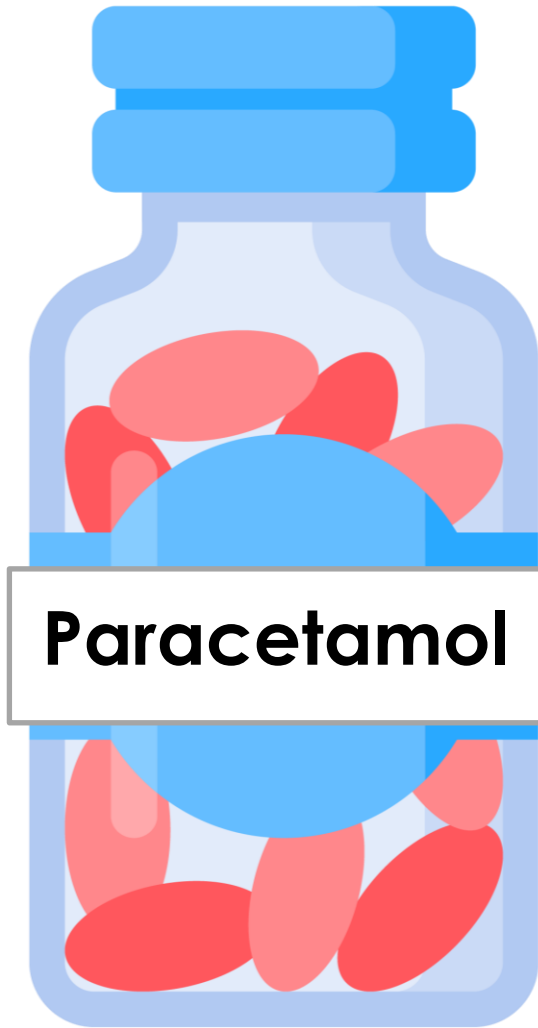
Chlorpheniramine Maleate..... 2 mg.

DOSAGE: Adult: 1 - 2 tablet(s) every 4 - 6 hours.

Children 12 years: 1 tablet every 4 - 6 hours

SUPPLY: In strip of 4's and 10's

Store at temperature not exceeding 30° c



FORMULA

Each Tablet Contains:

สูตรในยา 1 เม็ดประกอบด้วยตัวยาสำคัญ

Paracetamol..... 500 mg.

(พาราเซตามอล)

Phenylephrine HCl..... 10 mg.

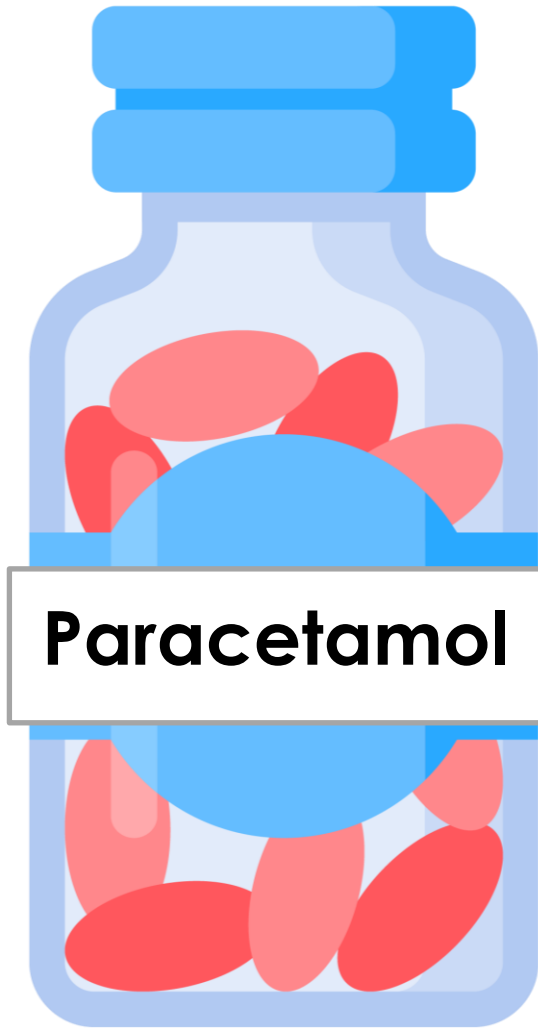
Chlorpheniramine Maleate..... 2 mg.

DOSAGE: Adult: 1 - 2 tablet(s) every 4 - 6 hours.

Children 12 years: 1 tablet every 4 - 6 hours

SUPPLY: In strip of 4's and 10's

Store at temperature not exceeding 30° c



FORMULA

Each Tablet Contains:

สูตรในยา 1 เม็ดประกอบด้วยตัวยาลำคัญ

Paracetamol..... 500 mg.

(พาราเซตามอล)

Phenylephrine HCl..... 10 mg.

(ฟีนีลเอฟฟริน ไฮโดรคลอไรด์)

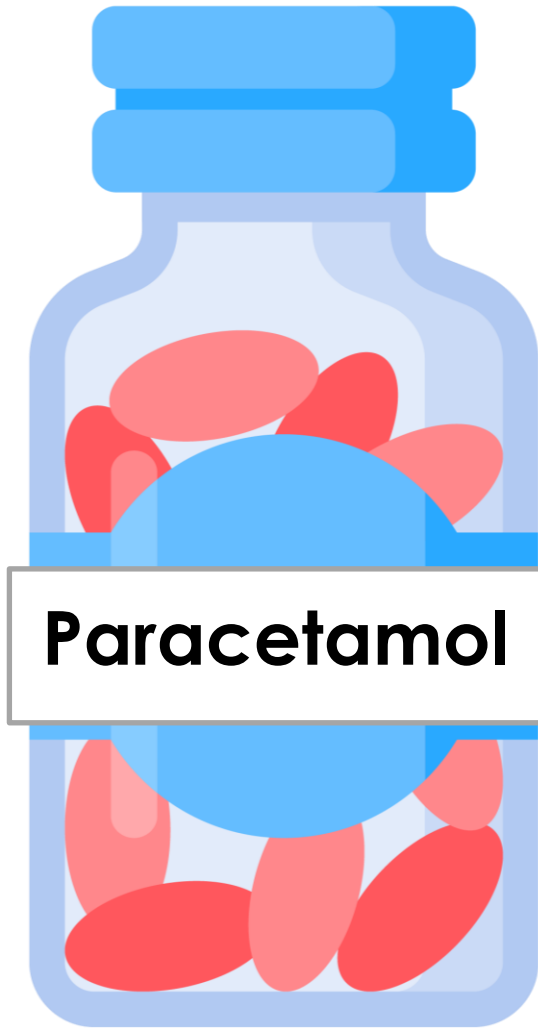
Chlorpheniramine Maleate..... 2 mg.

DOSAGE: Adult: 1 - 2 tablet(s) every 4-6 hours.

Children 12 years: 1 tablet every 4 - 6 hours

SUPPLY: In strip of 4's and 10's

Store at temperature not exceeding 30° c



FORMULA

Each Tablet Contains:

สูตรในยา 1 เม็ดประกอบด้วยตัวยาสำคัญ

Paracetamol..... 500 mg.

(พาราเซตามอล)

Phenylephrine HCl..... 10 mg.

(ฟีนิลเอเฟพรีน ไฮโดรคลอไรด์)

Chlorpheniramine Maleate..... 2 mg.

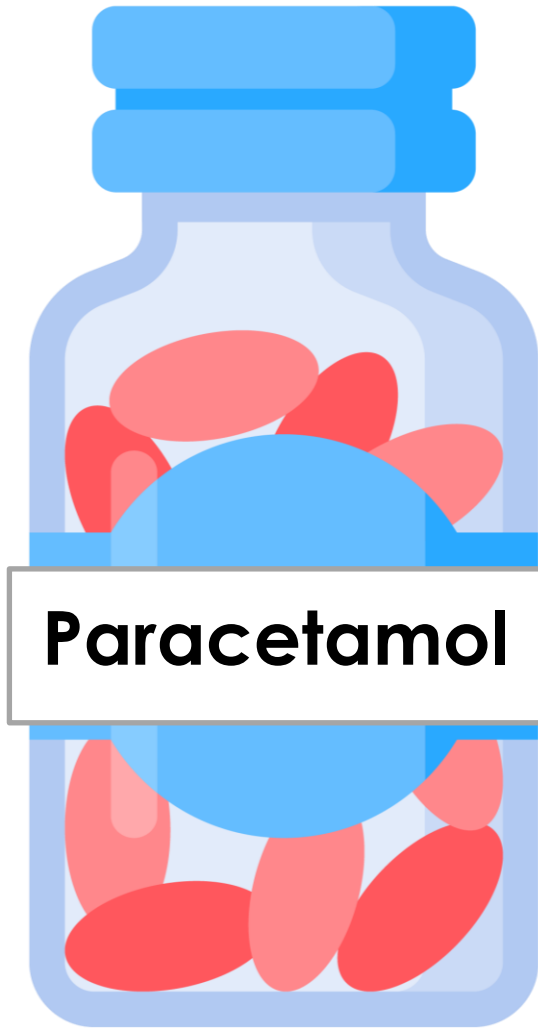
(คลอร์เฟนิรามีน มาลีเอต)

DOSAGE: Adult: 1 - 2 tablet(s) every 4-6 hours.

Children 12 years: 1 tablet every 4 - 6 hours

SUPPLY: In strip of 4's and 10's

Store at temperature not exceeding 30° c



FORMULA

Each Tablet Contains:

สูตรในยา 1 เม็ดประกอบด้วยตัวยาลำคัญ

Paracetamol..... 500 mg.

(พาราเซตามอล)

Phenylephrine HCl..... 10 mg.

(ฟีนิลเอฟเฟริน ไฮโดรคลอไรด์)

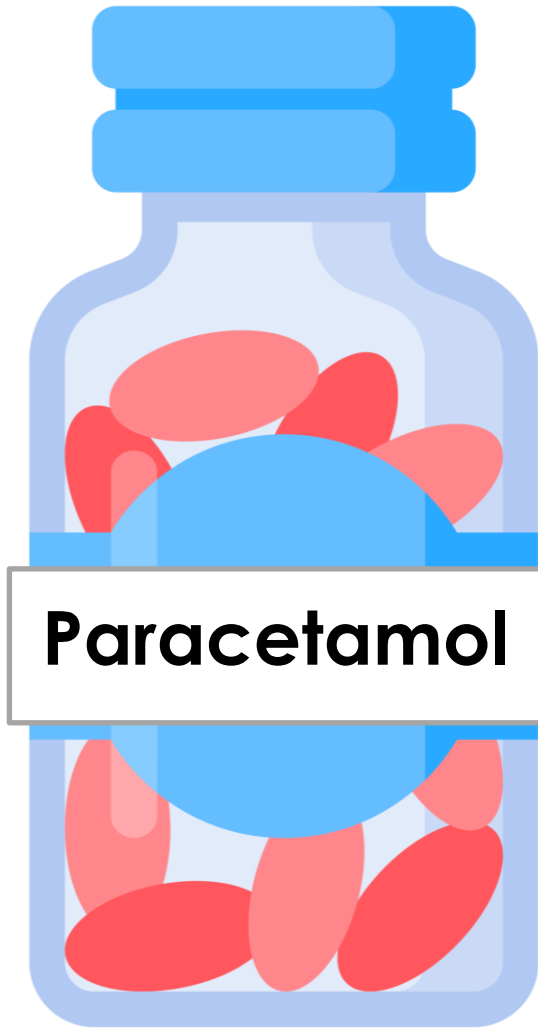
Chlorpheniramine Maleate..... 2 mg.

(คลอร์เฟนิรามีน มาลีเอต)

DOSAGE: Adult: 1 - 2 tablet(s) every 4-6 hours.

Children 12 years: 1 tablet every 4 - 6 hours

วิธีใช้



FORMULA

Each Tablet Contains:

สูตรในยา 1 เม็ดประกอบด้วยตัวยาสำคัญ

Paracetamol..... 500 mg.

(พาราเซตามอล)

Phenylephrine HCl..... 10 mg.

(ฟีนีลเอฟฟริน ไฮโดรคลอไรด์)

Chlorpheniramine Maleate..... 2 mg.

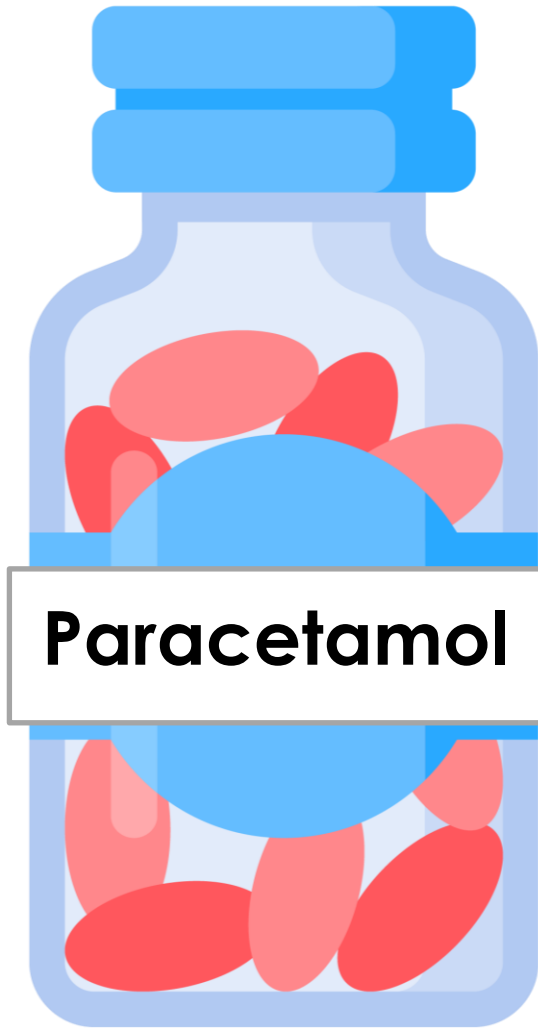
(คลอร์เฟนิรามีน มาลีเอต)

DOSAGE: Adult: 1 - 2 tablet(s) every 4 - 6 hours.

Children 12 years: 1 tablet every 4 - 6 hours

SUPPLY: In strip of 4's and 10's

ขนาดบรรจุ



FORMULA

Each Tablet Contains:

สูตรในยา 1 เม็ดประกอบด้วยตัวยาสำคัญ

Paracetamol..... 500 mg.

(พาราเซตามอล)

Phenylephrine HCl..... 10 mg.

(ฟีนิลเอฟฟริน ไฮโดรคลอไรด์)

Chlorpheniramine Maleate..... 2 mg.

(คลอร์เฟนิรามีน มาลีเอต)

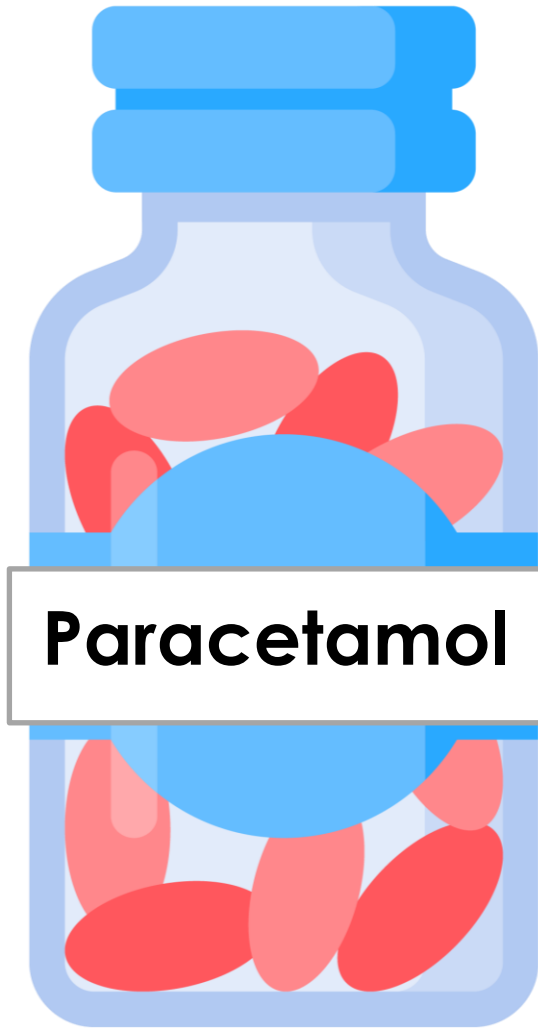
DOSAGE: Adult: 1 - 2 tablet(s) every 4 - 6 hours.

Children 12 years: 1 tablet every 4 - 6 hours

SUPPLY: In strip of 4's and 10's

Store at temperature not exceeding 30° c

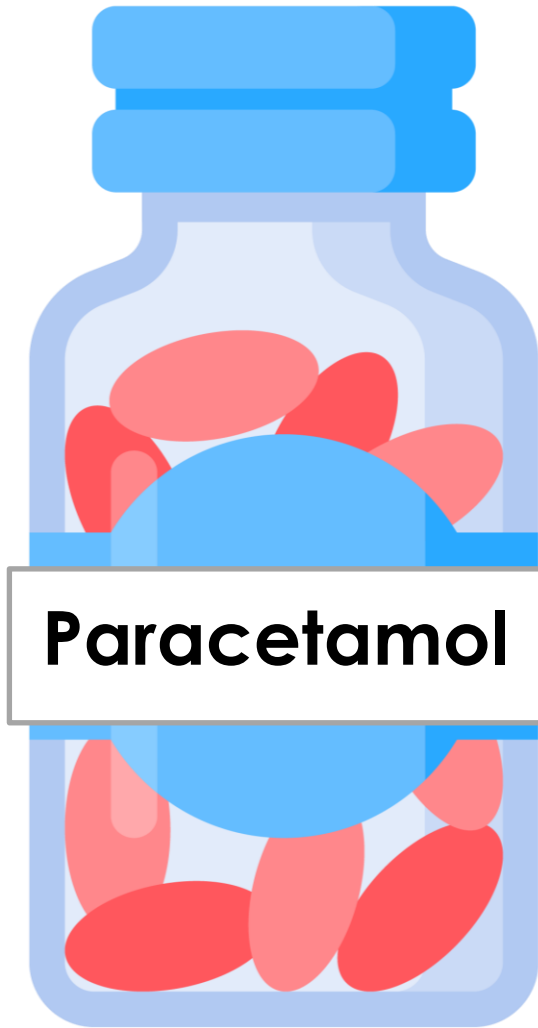
การเก็บรักษา



**What does this
medicine label use for?**

**It uses for relieving
runny nose and
sneezing.**





What is the directions of this medicine label?

Phenylephrine HCl..... 10 mg.

Chlorpheniramine Maleate..... 2 mg.

DOSAGE: Adult: 1 - 2 tablet(s) every 4-6 hours.

It takes 2 tablets every 4 to 6 hours.

Let's read



Drug Facts

Active Ingredient (in each tablet)

Purpose

Turtle shell powder 300mg fever reducer

Uses holistically cures the following conditions:

- febrile diseases ■ night sweats ■ weak immune system
- Amenorrhoea ■ thyroid lymphoma

Warnings

Do not use if you have:

- stomach problems ■ diarrhea ■ poor appetite

If pregnant or breastfeeding, ask a health professional before use.

Directions

adults and children 12 years and over

take 2-3 tablets per day

children under 12 years

ask a doctor

Other Information keep in a dry place

Inactive Ingredients

donkey hide, honeycomb, armadillidium (pill bug), eupolyphaga (ground beetle), dung beetle, potassium nitrate, bupleurum, colloid, keratin, iodine, vitamin D

Medicine Label

1. Active ingredient

2. Uses

3. Directions or Dosages

.....

4. Other information

.....

Medicine Label

Drug Facts

Active Ingredient (in each tablet)	Purpose
Turtle shell powder 300mg	fever reducer

Uses holistically cures the following conditions:

- febrile diseases ■ night sweats ■ weak immune system
- Amenorrhoea ■ thyroid lymphoma

Warnings
Do not use if you have:

- stomach problems ■ diarrhea ■ poor appetite

If pregnant or breastfeeding, ask a health professional before use.

Directions

adults and children 12 years and over	take 2-3 tablets per day
children under 12 years	ask a doctor

Other Information keep in a dry place

Inactive Ingredients
donkey hide, honeycomb, armadillidium (pill bug), eupolyphaga (ground beetle), dung beetle, potassium nitrate, bupleurum, colloid, keratin, iodine, vitamin D

1. Active ingredient
turtle shell powder 300 mg

Medicine Label

Drug Facts

Active Ingredient (in each tablet)	Purpose
Turtle shell powder 300mg	fever reducer

Uses holistically cures the following conditions:

- febrile diseases
- night sweats
- weak immune system
- Amenorrhoea
- thyroid lymphoma

Warnings
Do not use if you have:

- stomach problems
- diarrhea
- poor appetite

If pregnant or breastfeeding, ask a health professional before use.

Directions

adults and children 12 years and over	take 2-3 tablets per day
children under 12 years	ask a doctor

Other Information keep in a dry place

Inactive Ingredients
donkey hide, honeycomb, armadillidium (pill bug), eupolyphaga (ground beetle), dung beetle, potassium nitrate, bupleurum, colloid, keratin, iodine, vitamin D

2. Uses cures the following conditions:
night sweat, poor appetite,
thyroid lymphoma

Medicine Label

Drug Facts

Active Ingredient (in each tablet)	Purpose
Turtle shell powder 300mg	fever reducer

Uses holistically cures the following conditions:

- febrile diseases ■ night sweats ■ weak immune system
- Amenorrhoea ■ thyroid lymphoma

Warnings
Do not use if you have:

- stomach problems ■ diarrhea ■ poor appetite

If pregnant or breastfeeding, ask a health professional before use.

Directions	
adults and children 12 years and over	take 2-3 tablets per day
children under 12 years	ask a doctor

Other Information keep in a dry place

Inactive Ingredients
donkey hide, honeycomb, armadillidium (pill bug), eupolyphaga (ground beetle), dung beetle, potassium nitrate, bupleurum, colloid, keratin, iodine, vitamin D

3. Directions

adult and children 12 years and over: take 2-3 tablets per day
children under 12 years: ask a doctor

Medicine Label

Drug Facts

Active Ingredient (in each tablet)	Purpose
Turtle shell powder 300mg	fever reducer

Uses holistically cures the following conditions:

- febrile diseases ■ night sweats ■ weak immune system
- Amenorrhoea ■ thyroid lymphoma

Warnings
Do not use if you have:

- stomach problems ■ diarrhea ■ poor appetite

If pregnant or breastfeeding, ask a health professional before use.

Directions

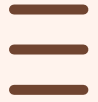
adults and children 12 years and over	take 2-3 tablets per day
children under 12 years	ask a doctor

Other Information keep in a dry place

Inactive Ingredients
donkey hide, honeycomb, armadillidium (pill bug), eupolyphaga (ground beetle), dung beetle, potassium nitrate, bupleurum, colloid, keratin, iodine, vitamin D

4. Other information

keep in a dry place



Wrap Up



1

Drug Facts

Active ingredient (in each caplet)	Purpose
Acetaminophen 500 mg.....	Pain reliever/fever reducer

2

Uses

- temporarily relieves minor aches and pains due to:
 - the common cold
 - minor pain of arthritis
 - muscular aches
 - premenstrual and menstrual cramps
 - temporarily reduces fever
 - headache
 - backache
 - toothache

3

Warnings

Liver warning: This product contains acetaminophen. Severe liver damage may occur if you take

- more than 4,000 mg of acetaminophen in 24 hours
- with other drugs containing acetaminophen
- 3 or more alcoholic drinks every day while using this product

Allergy alert: Acetaminophen may cause severe skin reactions. Symptoms may include:

- skin reddening
- blisters
- rash

If a skin reaction occurs, stop use and seek medical help right away.

Do not use

- with any other drug containing acetaminophen (prescription or nonprescription). If you are not sure whether a drug contains acetaminophen, ask a doctor or pharmacist.
- if you have ever had an allergic reaction to this product or any of its ingredients

Ask a doctor before use if you have liver disease

Ask a doctor or pharmacist before use if you are taking the blood thinning drug warfarin

Drug Facts (continued)

Stop use and ask a doctor if

- pain gets worse or lasts more than 10 days
- fever gets worse or lasts more than 3 days
- new symptoms occur
- redness or swelling is present

These could be signs of a serious condition.

If pregnant or breast-feeding, ask a health professional before use.

Keep out of reach of children. Overdose warning: In case of overdose, get medical help or contact a Poison Control Center right away (1-800-222-1222). Quick medical attention is critical for adults as well as for children even if you do not notice any signs or symptoms.

4

Directions

do not take more than directed (see overdose warning)

adults and children 12 years and over	<ul style="list-style-type: none"> take 2 caplets every 6 hours while symptoms last do not take more than 6 caplets in 24 hours, unless directed by a doctor do not use for more than 10 days unless directed by a doctor
children under 12 years	ask a doctor

5

Other information ■ store at 20-25°C (68-77°F)

6

Inactive ingredients carnauba wax, corn starch*, croscarmellose sodium*, hypromellose, polyethylene glycol, povidone, pregelatinized starch, sodium starch glycolate*, stearic acid *may contain one or more of these ingredients

7

Questions or comments? 1-800-719-9260

Why is it important to know how to read a prescription medication label?

You can **take your medication correctly**.

You will **have the best treatment results**.



บทเรียนครั้งต่อไป

เรื่อง

Survey of Illness Case

ดาวน์โหลดเอกสารได้ที่ www.dtv.ac.th

รายวิชาภาษาอังกฤษ
ชั้นมัธยมศึกษาปีที่ 1

