

รายวิชา ภาษาอังกฤษ

รหัสวิชา อ22101

ชั้นมัธยมศึกษาปีที่ 2

Getting around (2)

ครูผู้สอน ครูวัลลภ ใจหมั่น

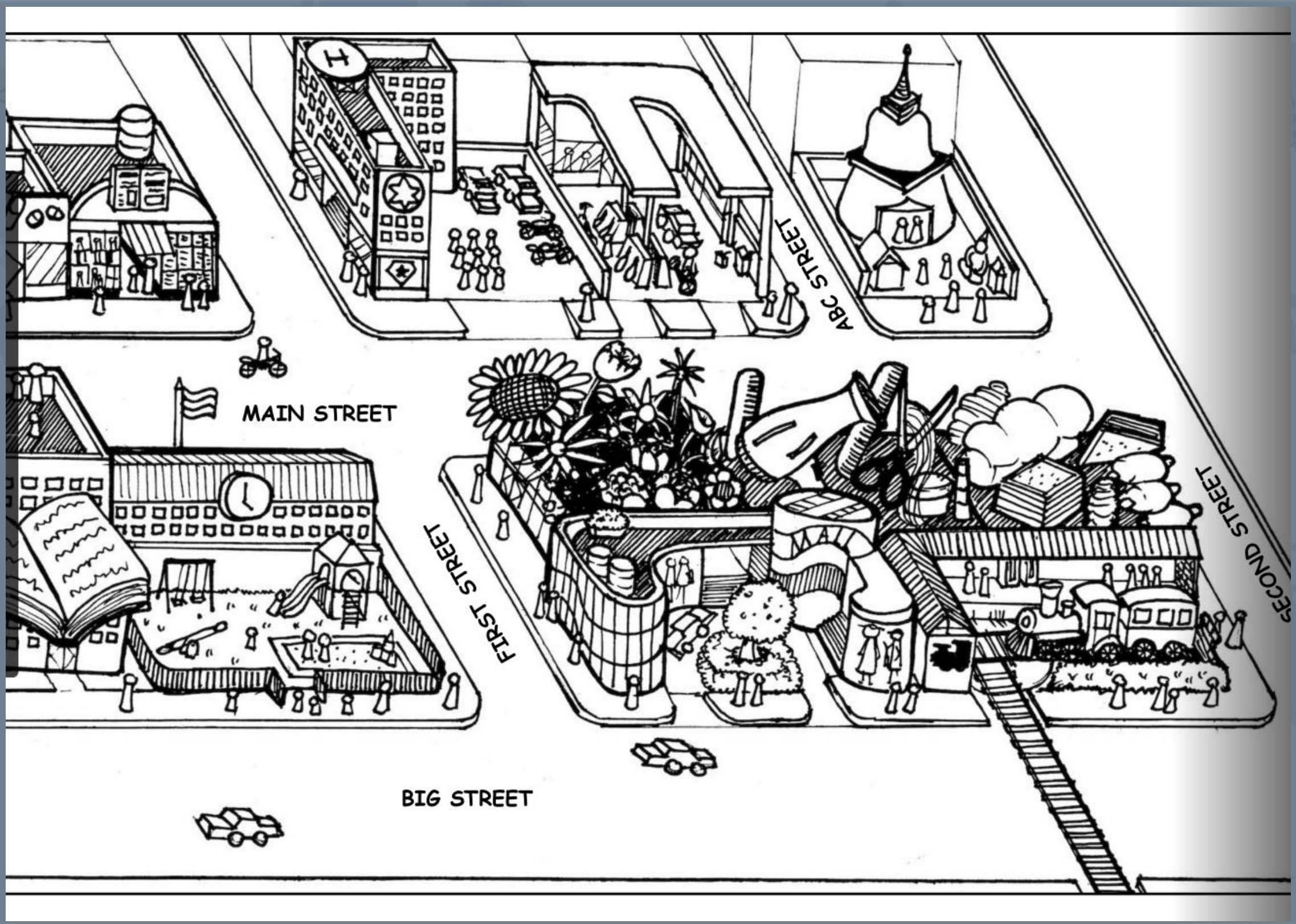
ครูพรทิพย์ พงษ์ทอง





Getting around (2)

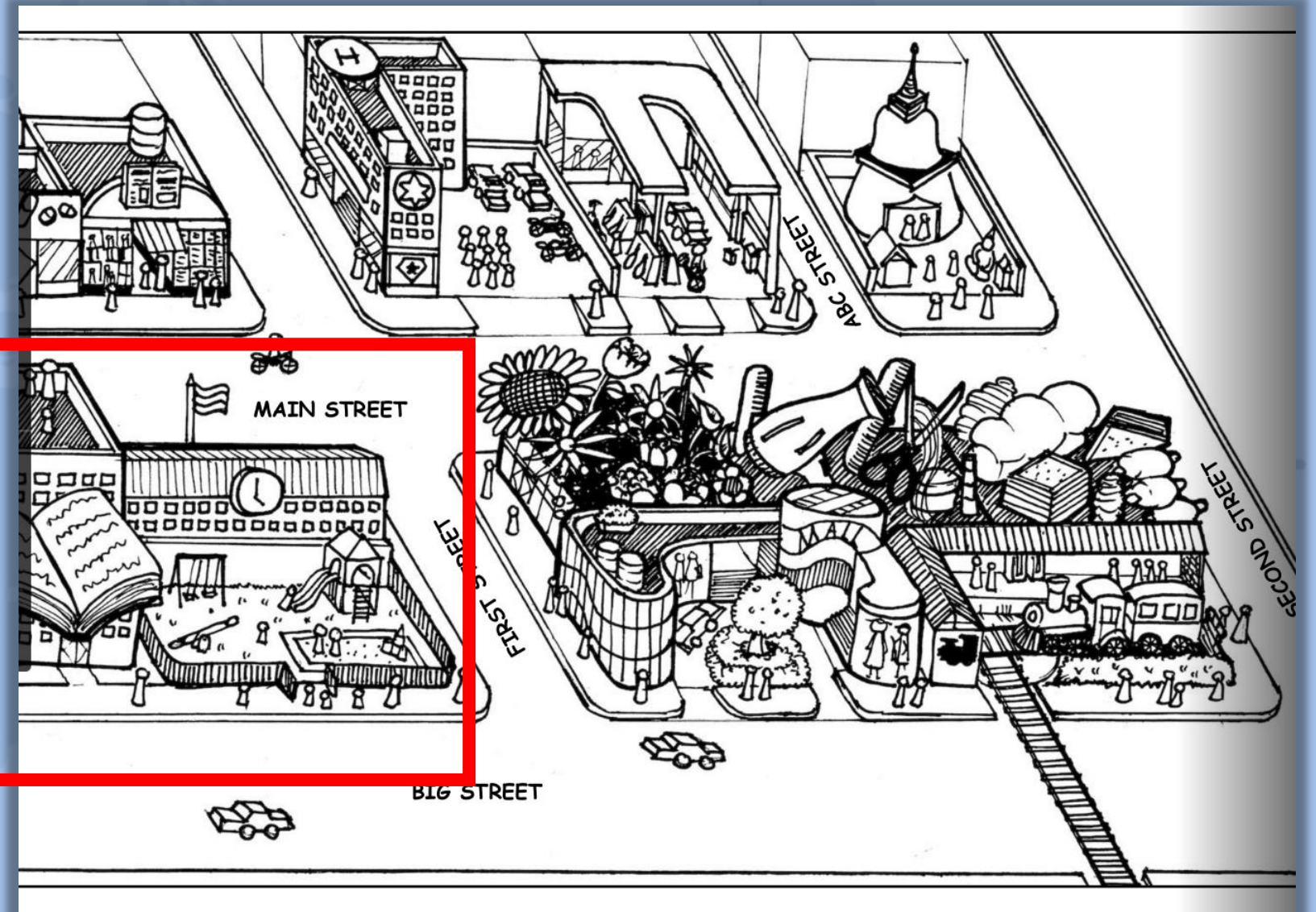
Map B



Map B

Q: Where is the school?

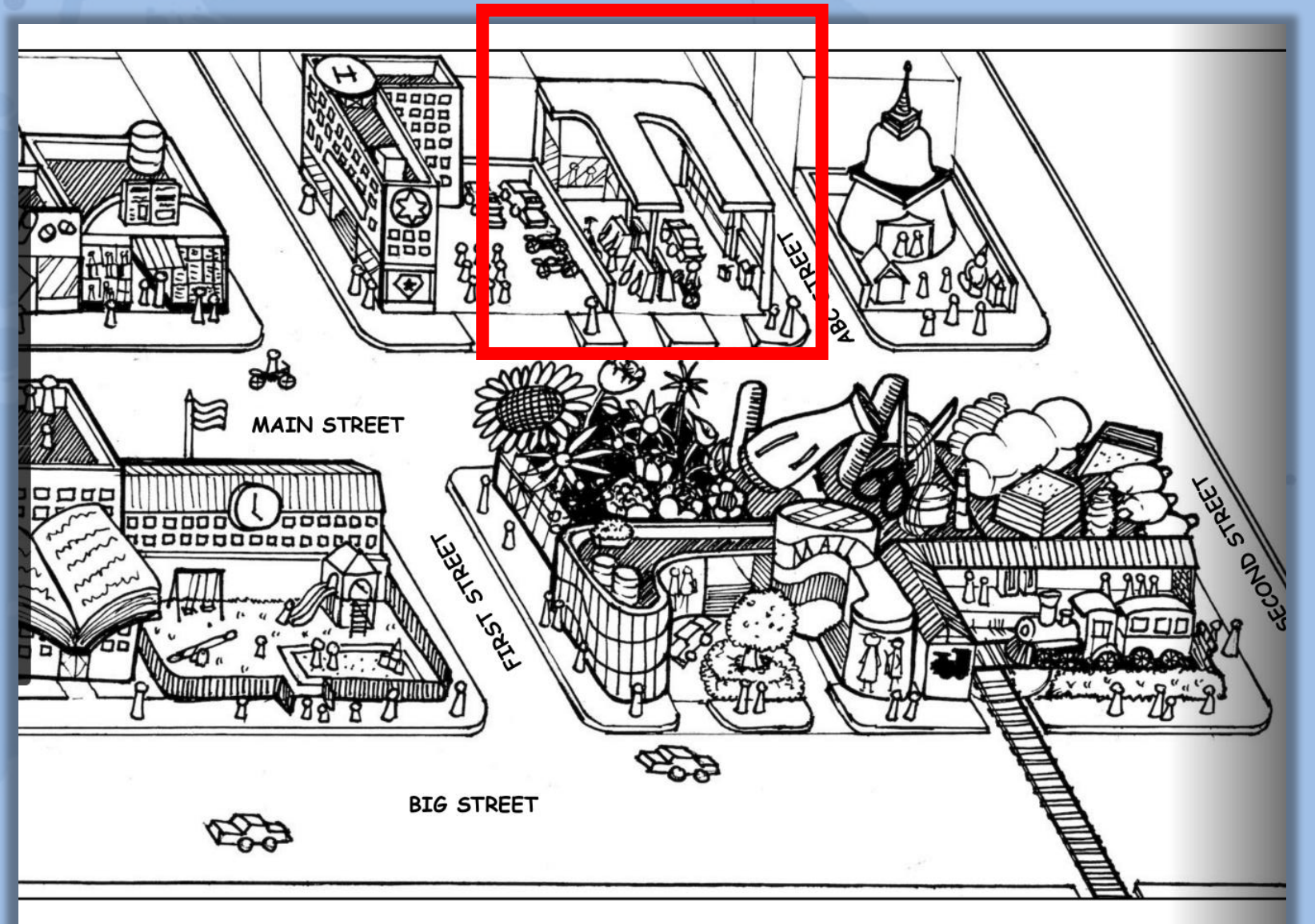
A: It's across from the mall.

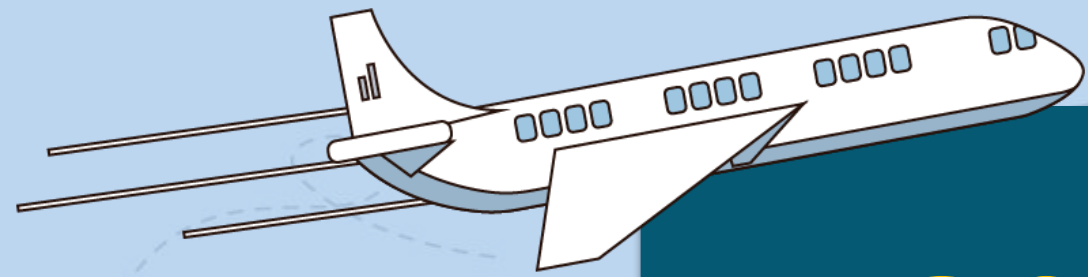


Map B

Q: Where is the petrol station?

**A: It's next to the hotel,
on the right.**

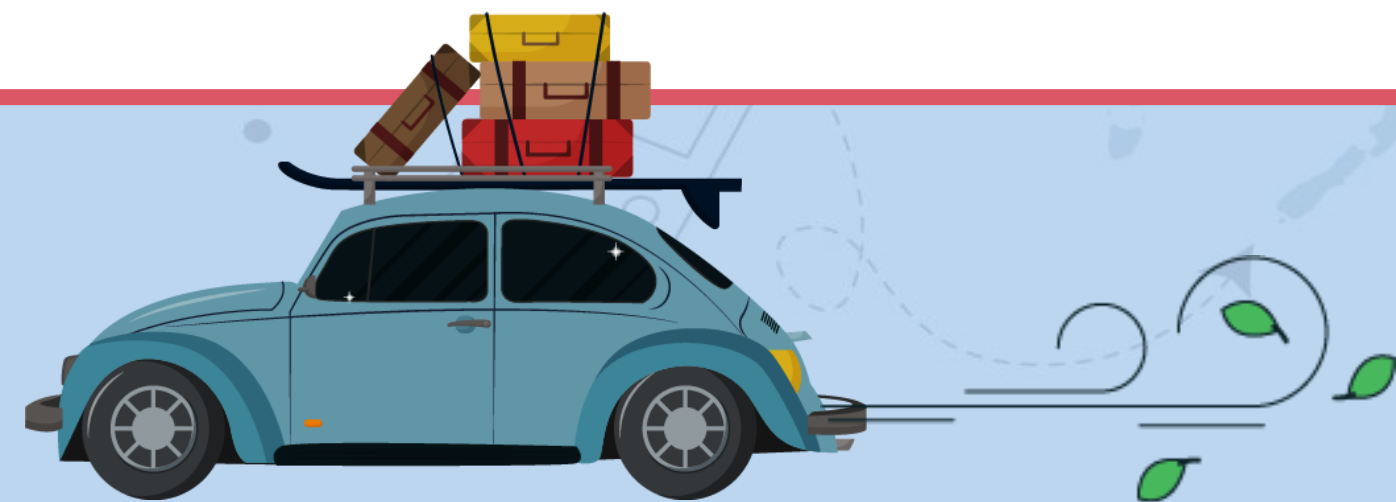




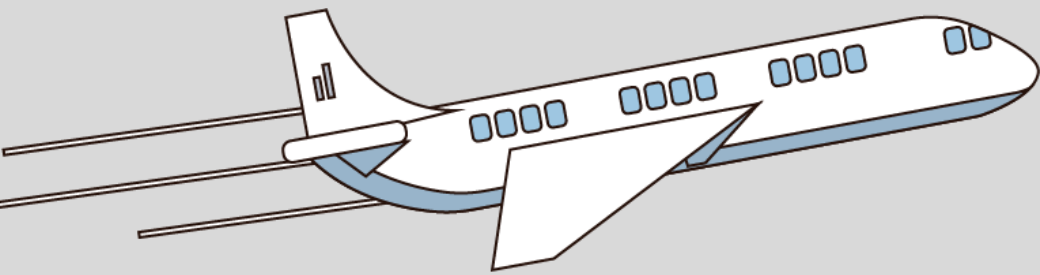
จุดประสงค์การเรียนรู้



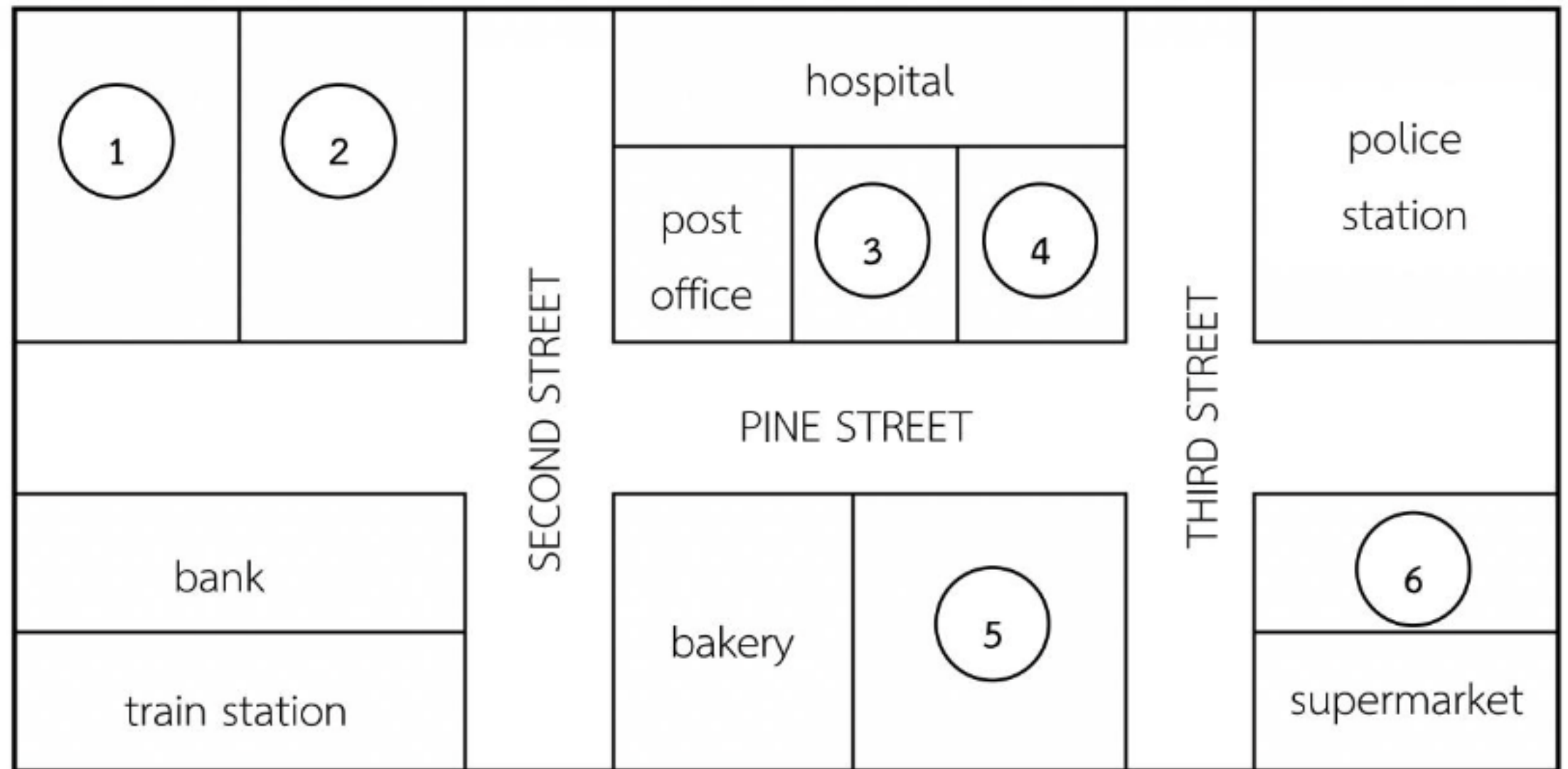
1. ออกเสียงคำศัพท์เกี่ยวกับที่ตั้งของสถานที่ต่าง ๆ ในเมืองได้
2. ฟังและอ่านบทสนทนาแล้วระบุที่ตั้งของสถานที่ต่าง ๆ
ในเมืองได้



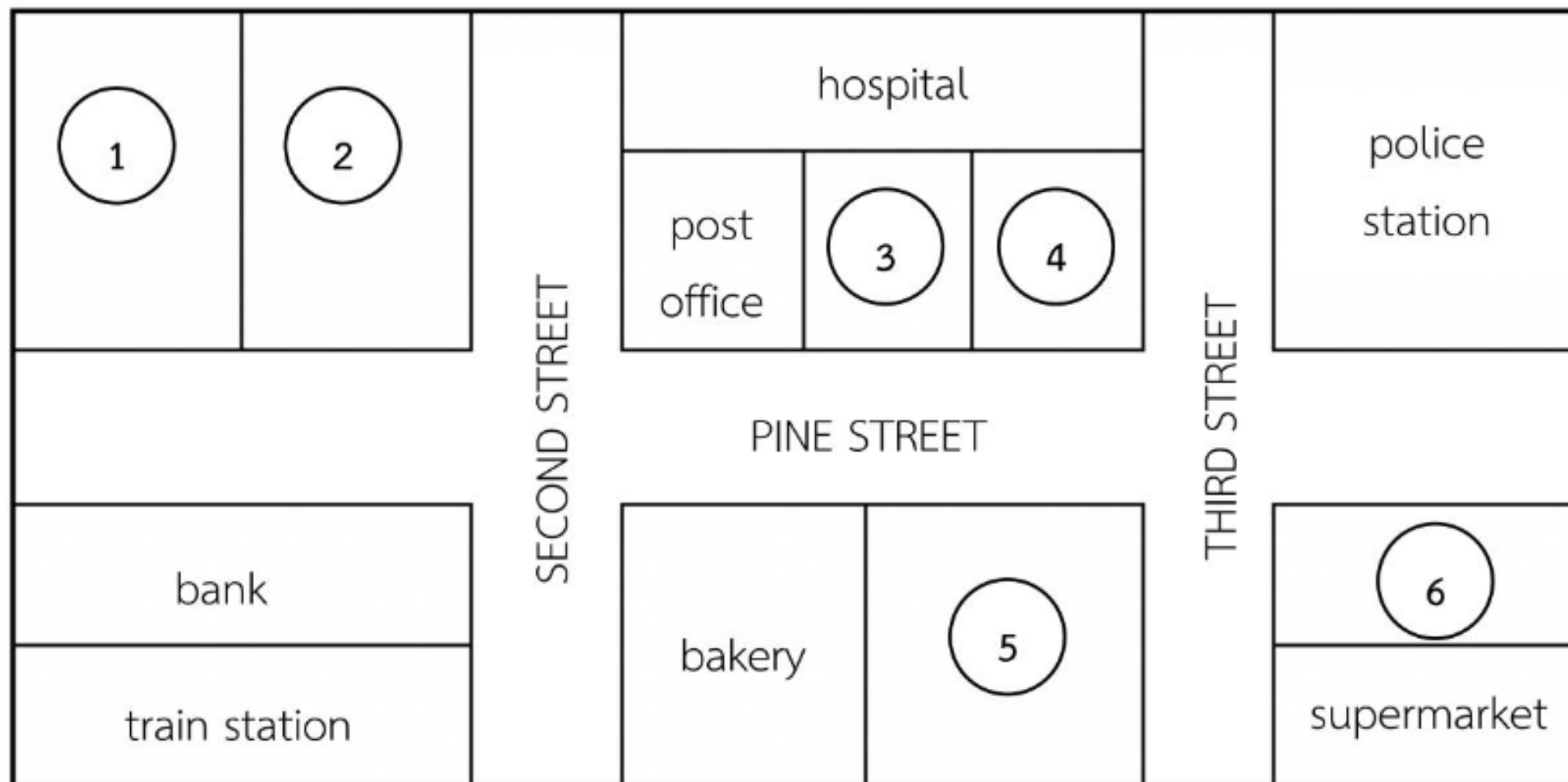
Directions: Listen to the conversation and write the missing places on the map.



Worksheet: I'm New Here.



Directions: Listen to the conversation and write the missing places on the map.



1. newsagent
2. petrol station
3. chemist's
4. barber
5. florist's
6. playground



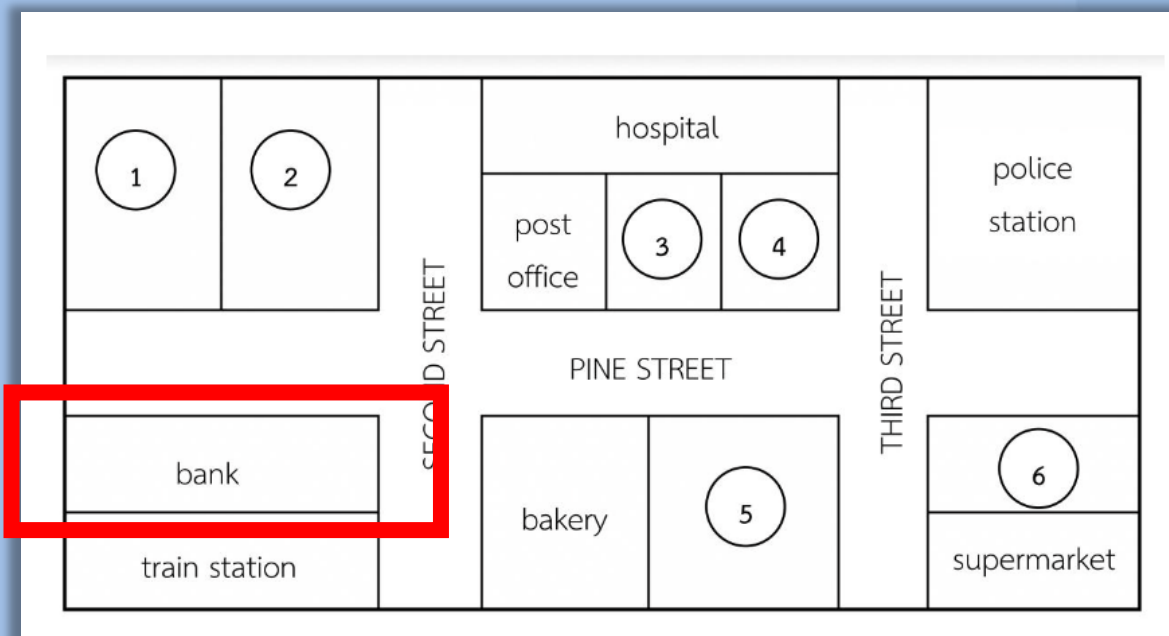
Asking for and giving a location



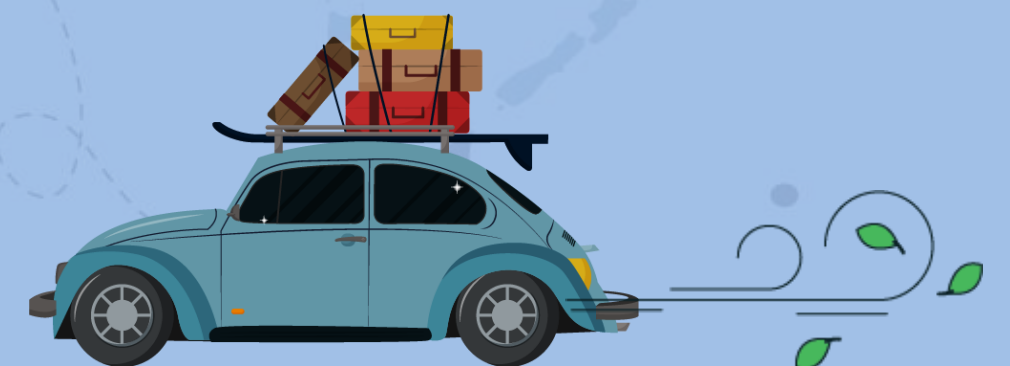
Q: Where is the _____ **bank** ?



Q: Is there a/an _____ **bank** around here?



A: It's next to the train station.



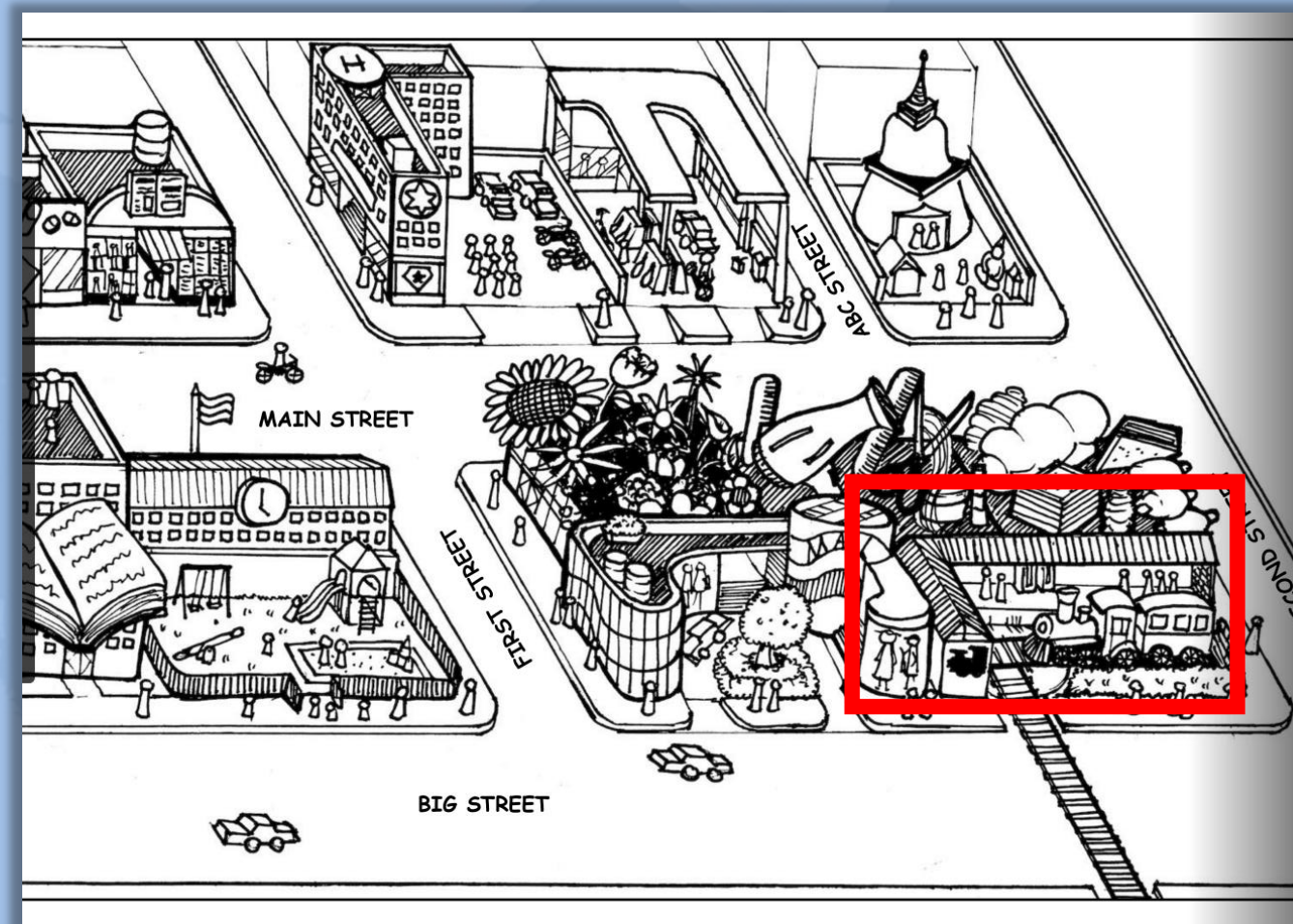
Asking for and giving a location



Q: Where is **the train**?



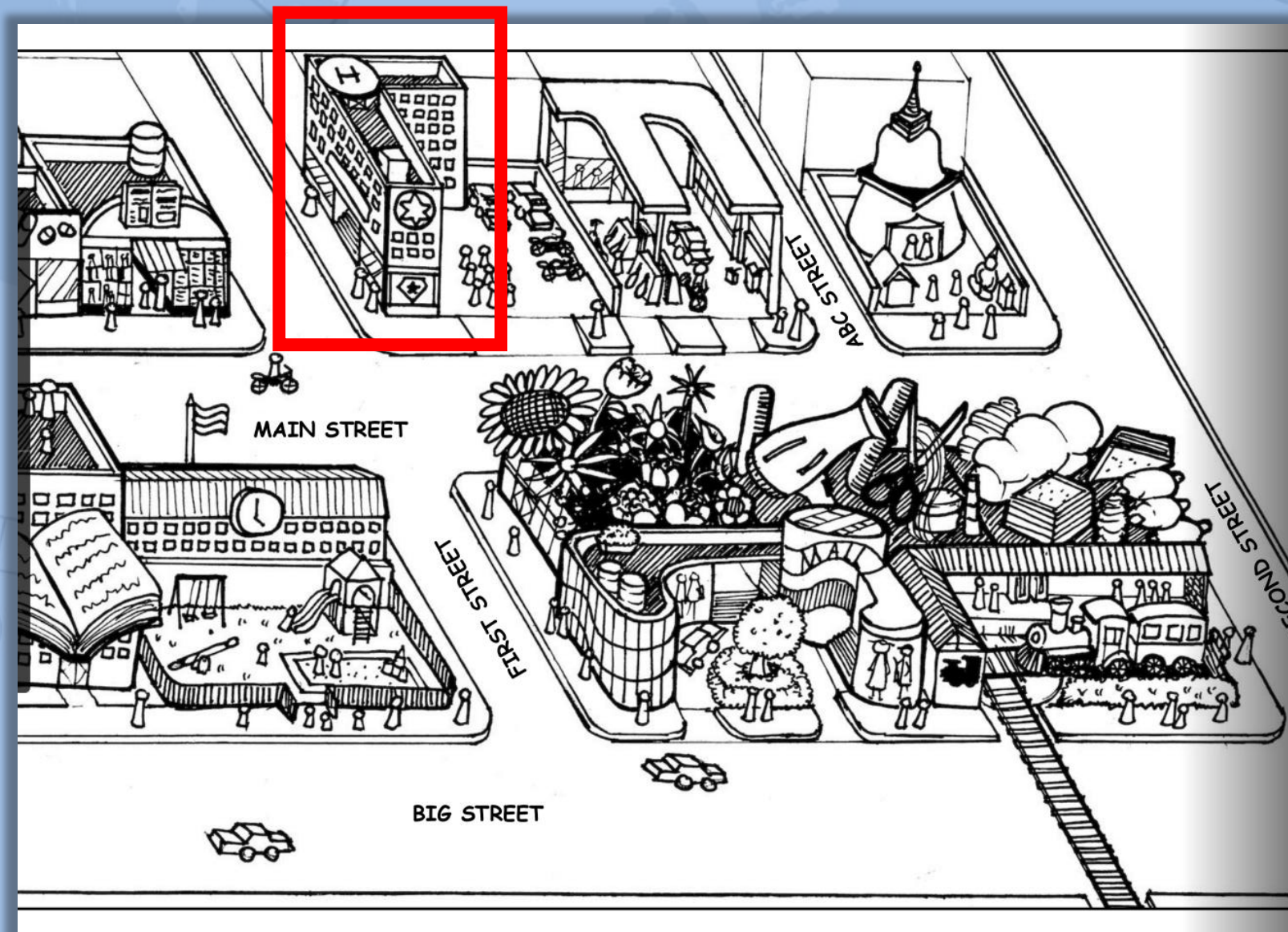
A: **The train is** around the corner of the train station .



Asking for and giving a location

Q: Where is **the hotel**?

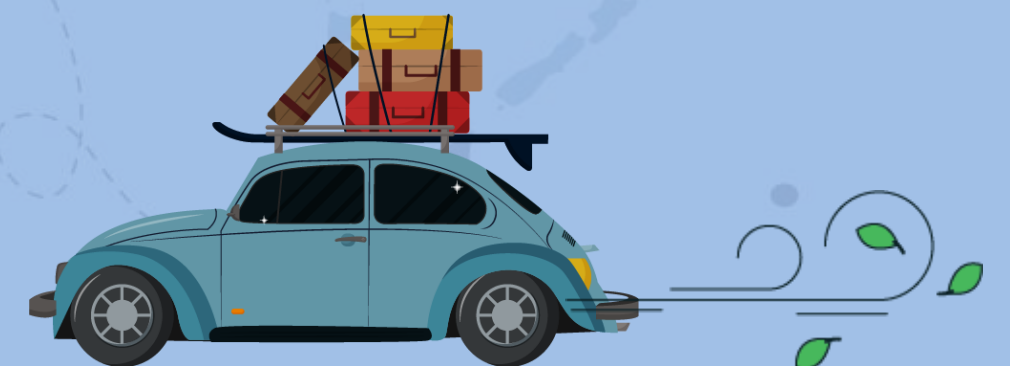
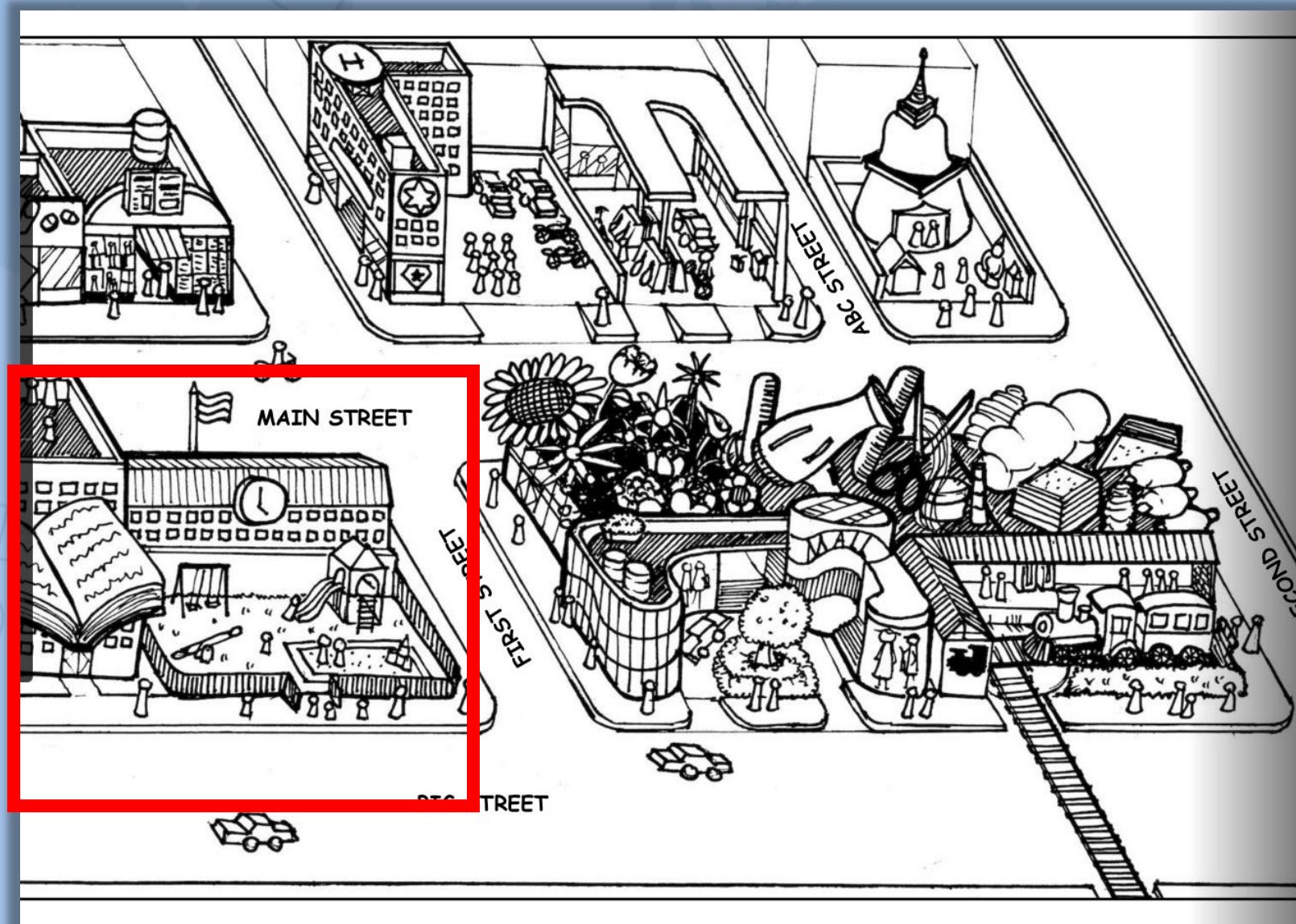
A: **The hotel is** between the shop and the petrol station.



Asking for and giving a location

Q: Where is **the school**?

A: **The school is** across from the mall.



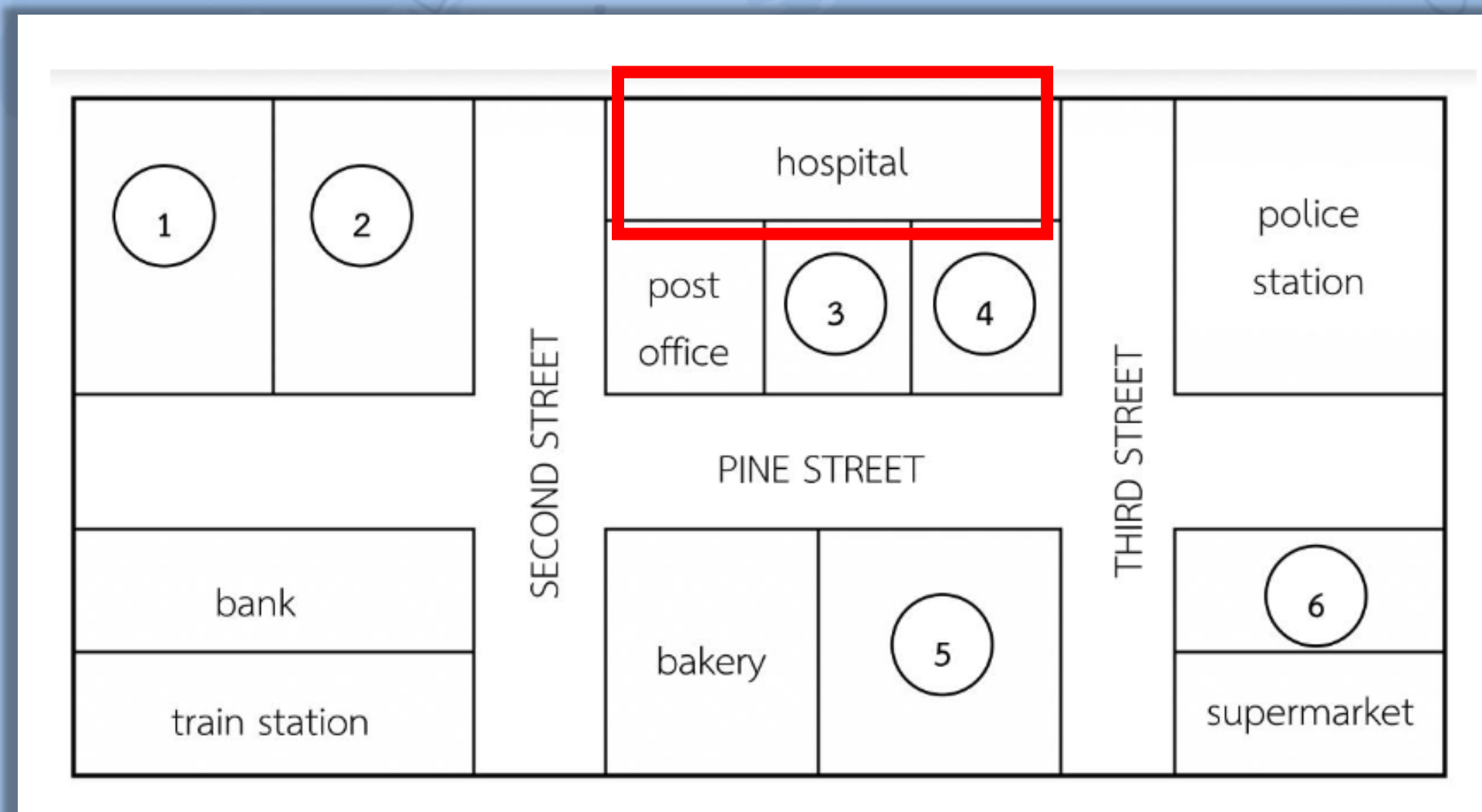


Q: Where is the hospital?

Asking for and giving a location



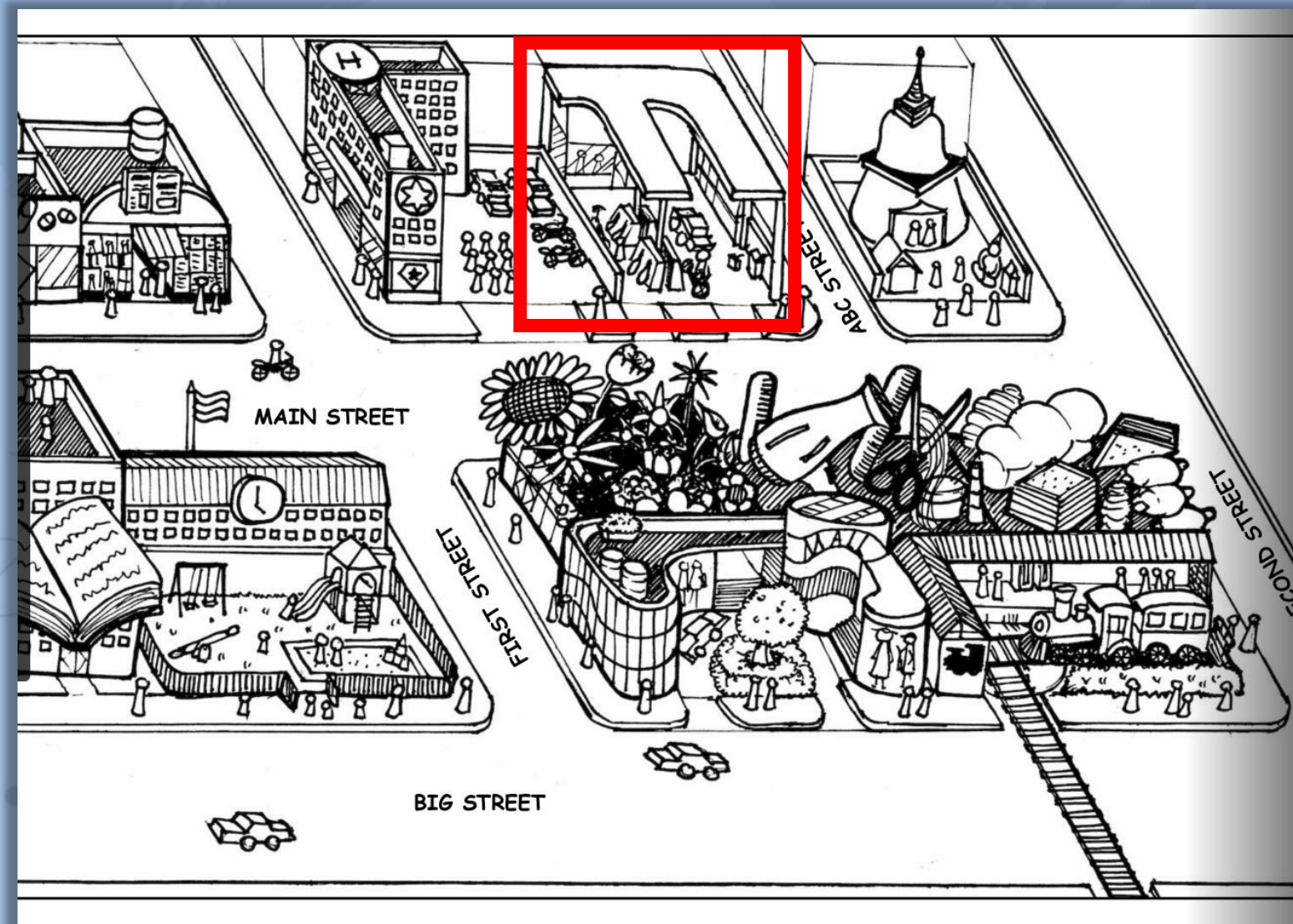
A: The hospital is behind the post office.



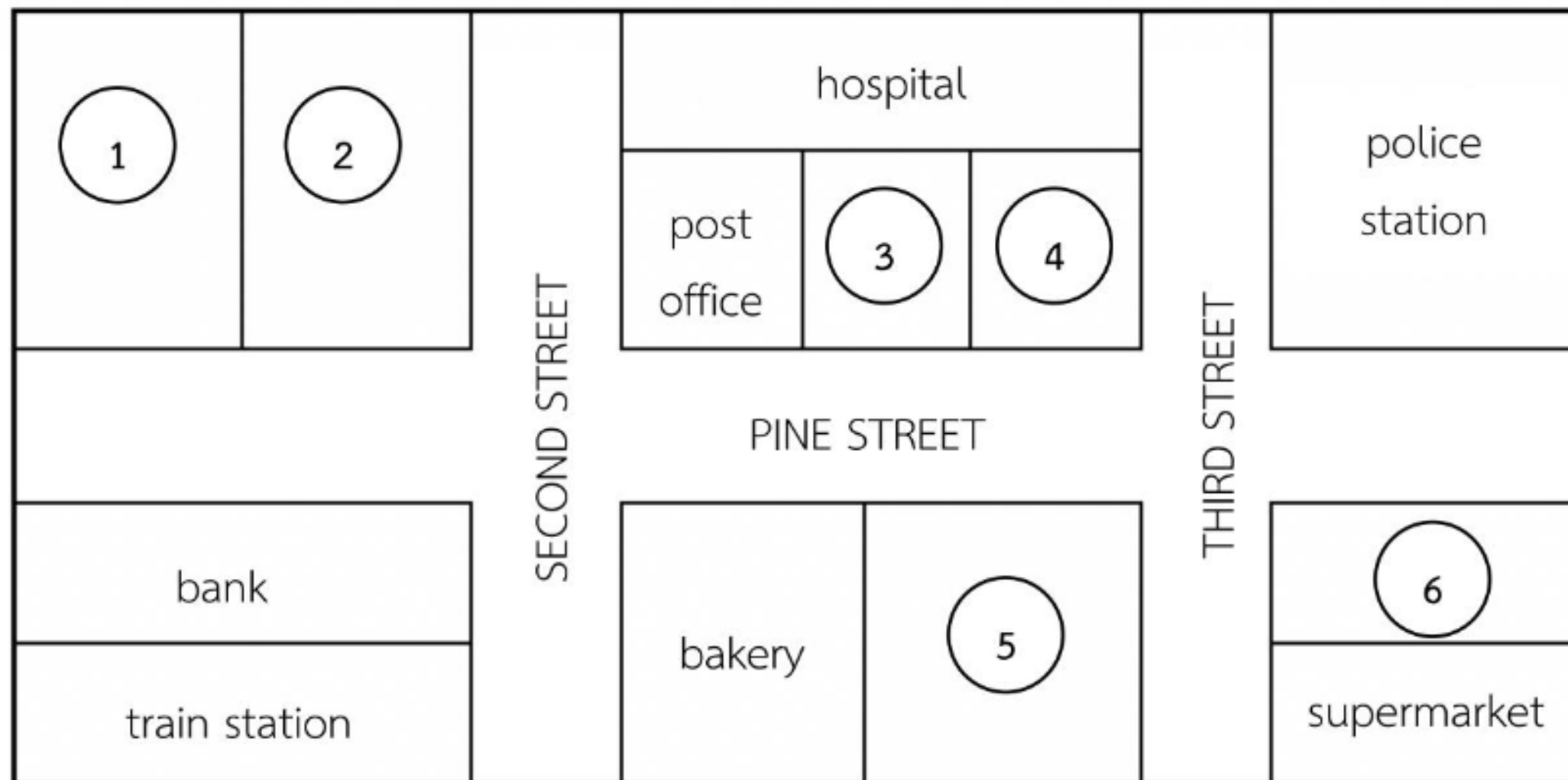
Asking for and giving a location

Q: Where is **the petrol station**?

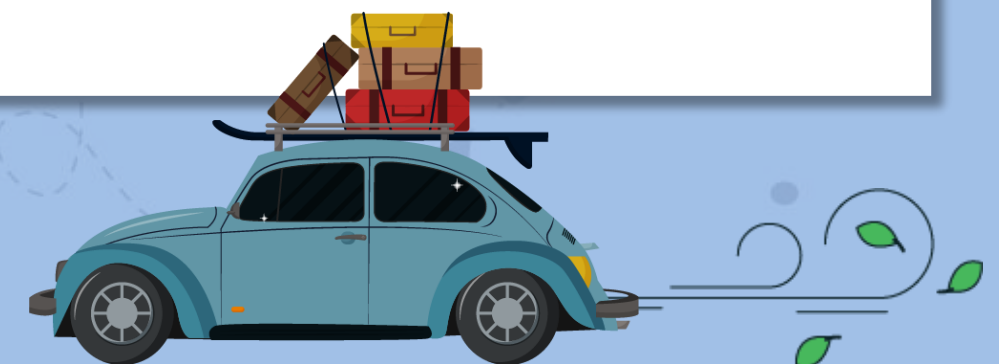
A: The petrol station is on the ABC Street.



Directions: Practice asking for and giving a location .

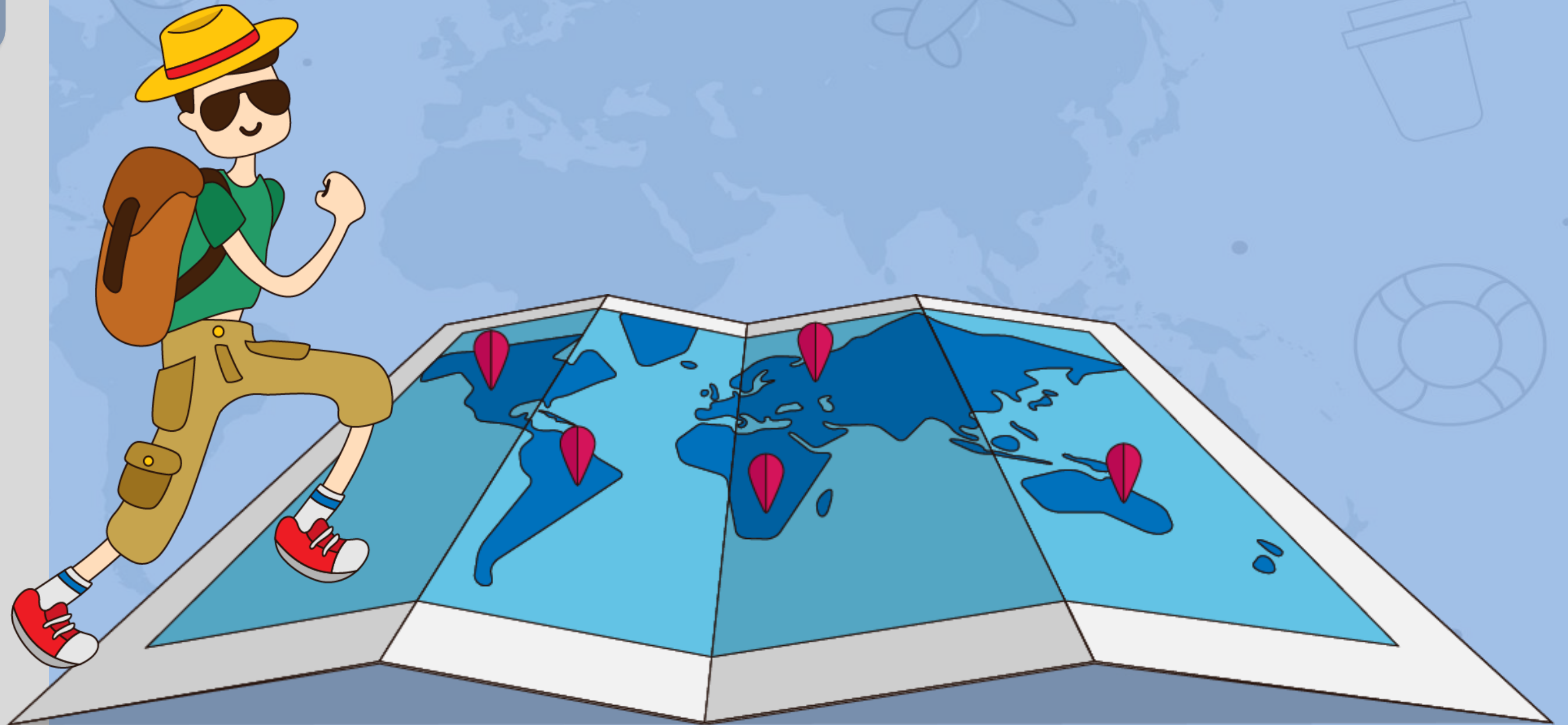


1. newsagent
2. petrol station
3. chemist's
4. barber
5. florist's
6. playground



Worksheet

Complete the Map



Worksheet

Complete the Map



Student A

Directions: Make a conversation with your student B and write the numbers of the missing places on the map.

police station		ABC STREET	②
①	bank		③
FIRST STREET			temple
④	⑤		bakery

- supermarket
- newsagent's
- chemist's
- library
- post office

Worksheet

Complete the Map



Student B

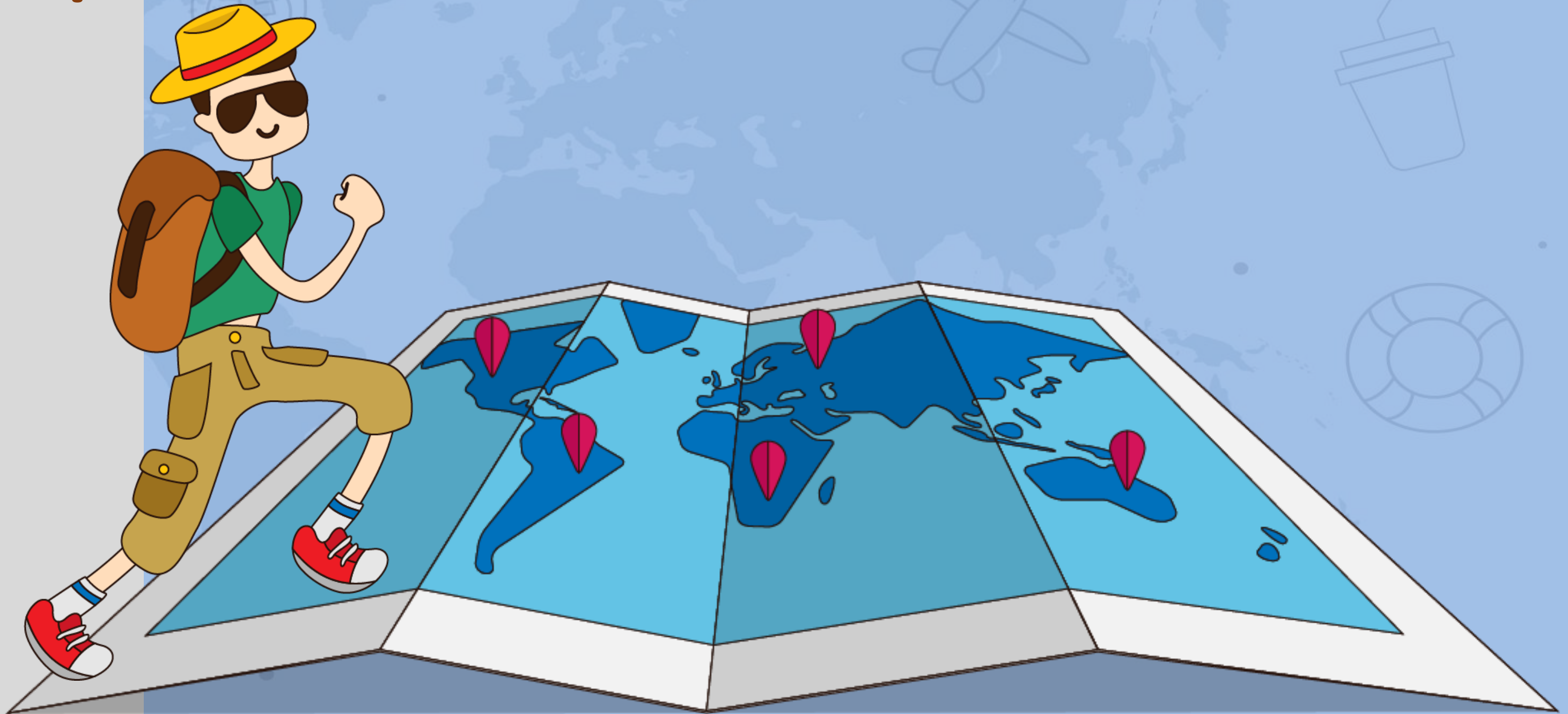
Directions: Tell your student A about the places on the map.

police station		ABC STREET	
	bank		
FIRST STREET			
	bakery		temple

Worksheet

Complete the Map

Take turns!



Worksheet

Complete the Map



Student B

Directions: Make a conversation with your student A and write the numbers of the missing places on the map.

①	②	chemist's	SPEAR STREET	school		
hotel				temple	③	
MAIN STREET						
train station	④			⑤		

- library
- sport club
- florist's
- playground
- bank

Worksheet

Complete the Map



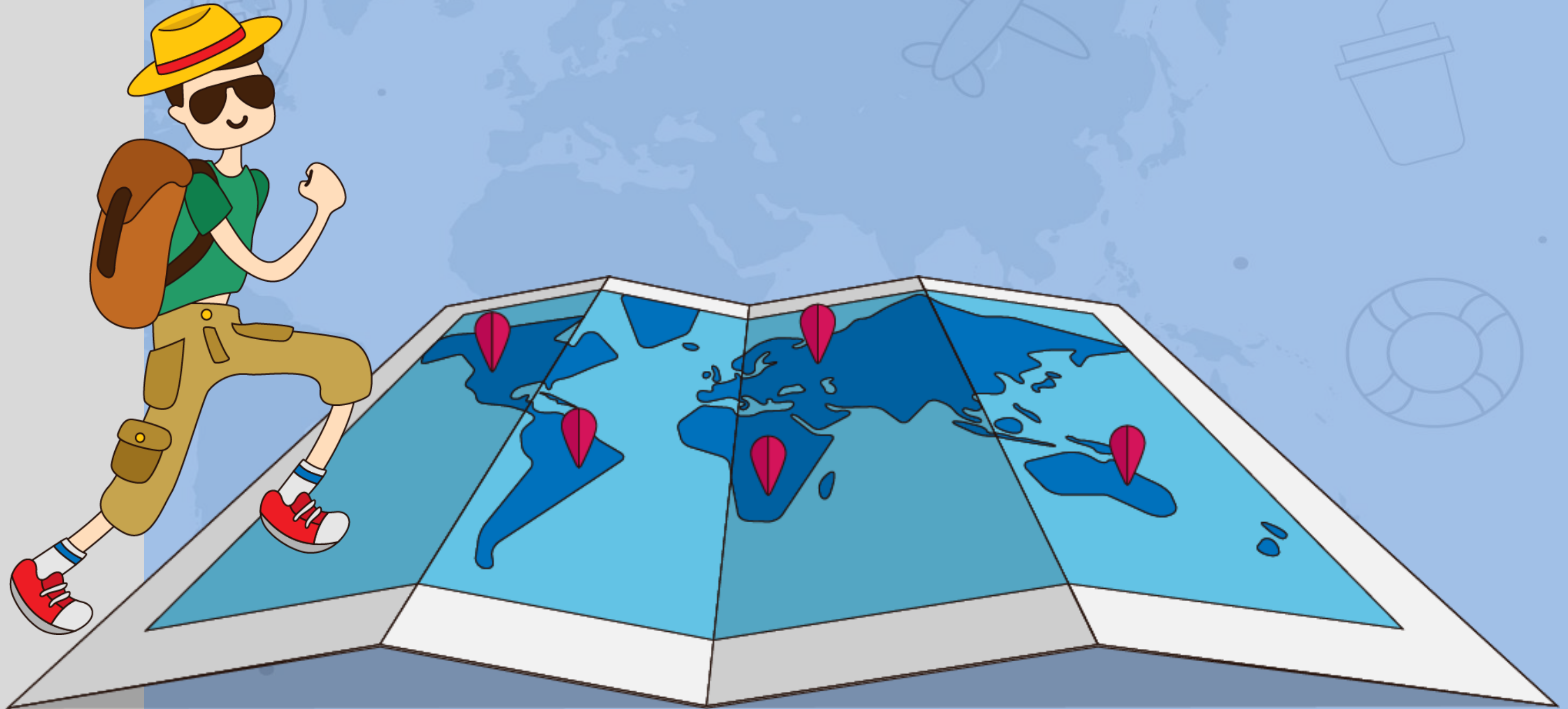
Student A

Directions: Tell your student B about the places on the map.

		chemist's	SPEAR STREET	school	
hotel				temple	
MAIN STREET					
train station					

Worksheet

Complete the Map



Worksheet

Complete the Map



Student A

Directions: Make a conversation with your student A and write the numbers of the missing places on the map.

police station		ABC STREET	②
①	bank		③
FIRST STREET			temple
④	⑤		bakery

- supermarket
- newsagent's
- chemist's
- library
- post office

Worksheet

Complete the Map



Student B

Directions: Make a conversation with your student A and write the numbers of the missing places on the map.

①	②	chemist's	SPEAR STREET	school	
hotel		temple		③	
MAIN STREET					
train station	④	⑤			

- ③ library
- ① sport club
- ④ florist's
- ⑤ playground
- ② bank

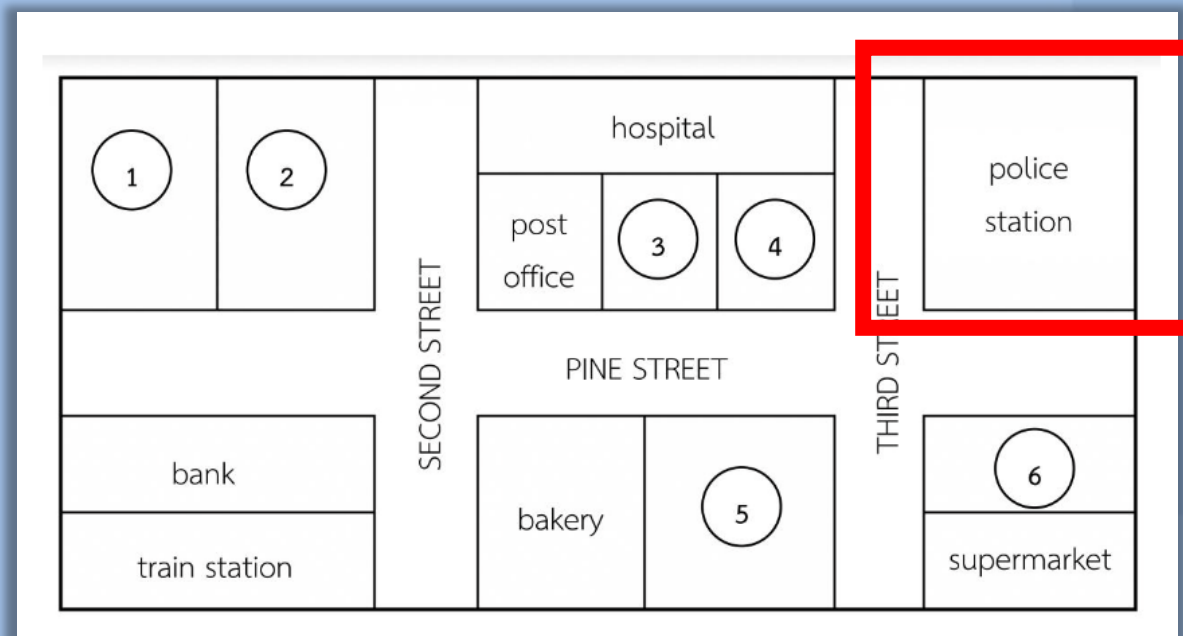
Asking for and giving a location



Q: Where is the police station ?

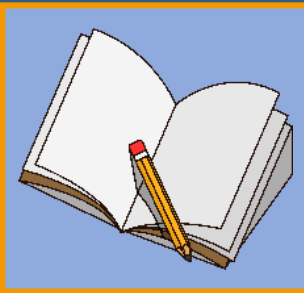


Q: Is there a police station around here?



A: It's across from the hospital





บทเรียนครั้งต่อไป

เรื่อง Asking for and Giving Directions (1)



สิ่งที่ต้องเตรียม

1. ใบงานที่ 1 Directions
2. แผนที่

 (สามารถดาวน์โหลดได้ที่ www.dltv.ac.th)

