

รายวิชา ภาษาอังกฤษ

รหัสวิชา อ23101 ชั้นมัธยมศึกษาปีที่ 3

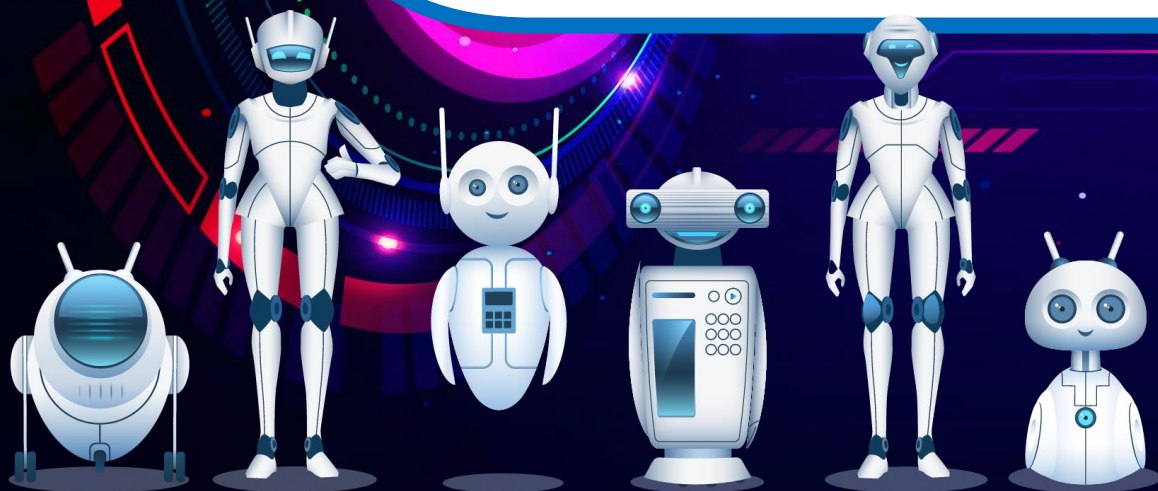
เรื่อง Future Is Here (1)

ครูผู้สอน ครูธีรวุฒิ ศรีสวัสดิ์

ครูสวรรณยา อุดรพรหม



Future Is Here (1)



Have you had **any**
machine at home ?

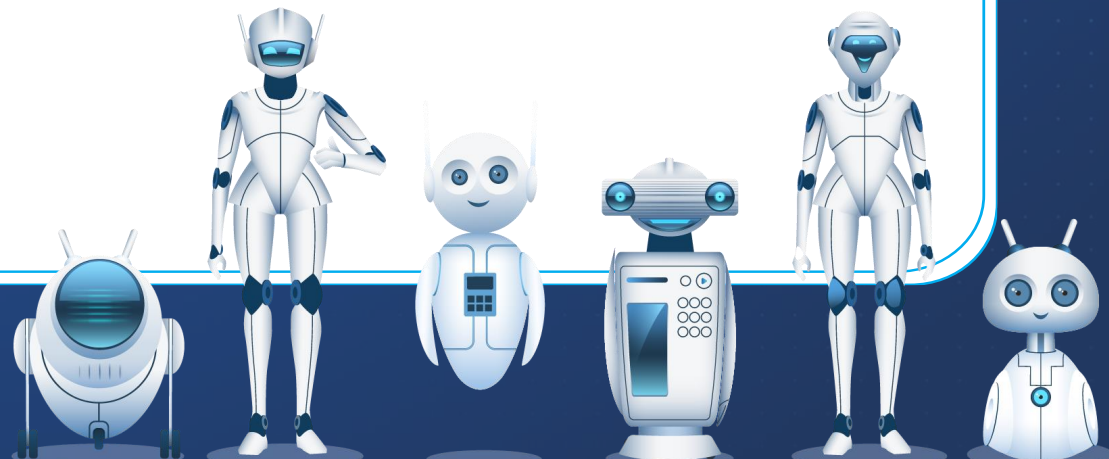


**What do you use
them for?**



จุดประสงค์การเรียนรู้

1. ออกเสียงคำศัพท์ที่ได้เรียนรู้ได้อย่างถูกต้อง
2. ตอบคำถามจากบทอ่านได้อย่างถูกต้อง

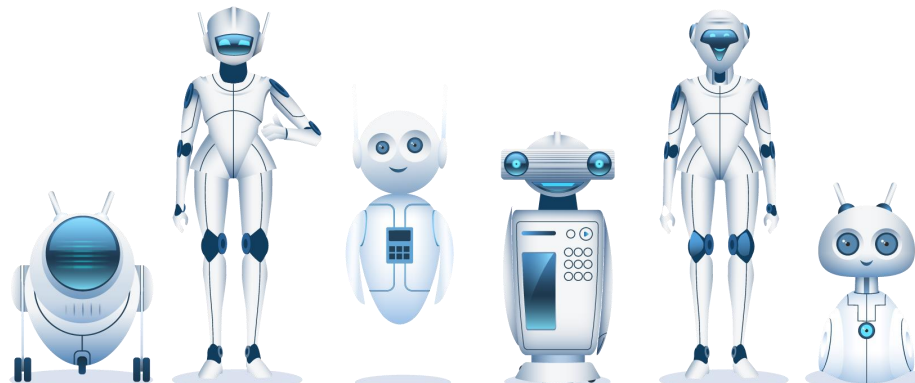


Vocabulary



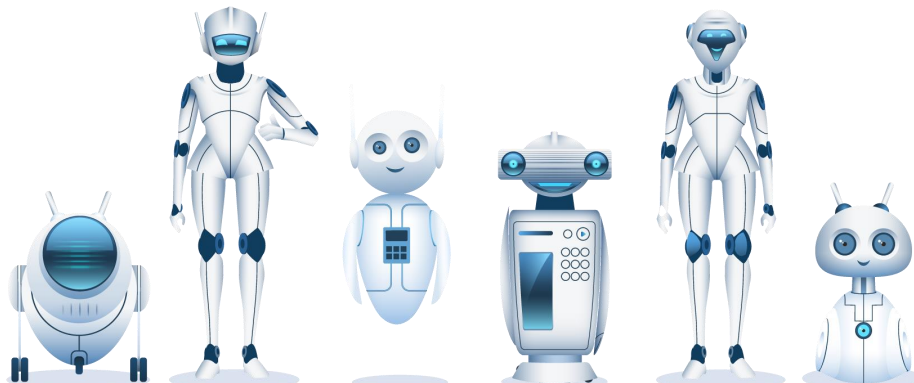
manufacturing (n)

the business of producing goods in large numbers, especially in factories



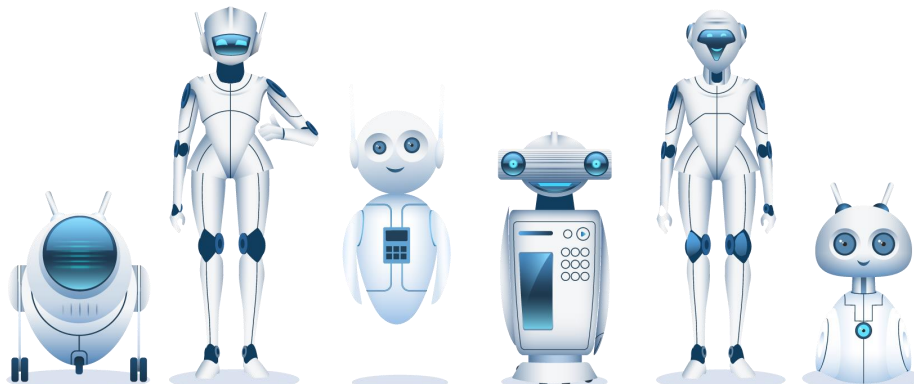
automotive (adj)

relating to road vehicles.



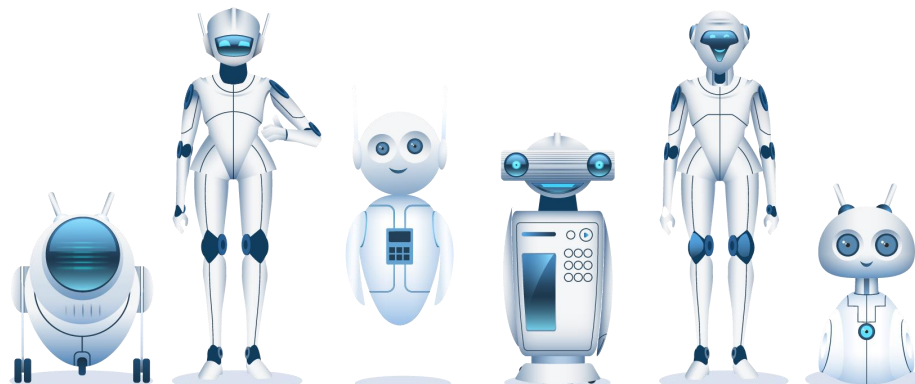
respond (v)

to say or do something as
a reaction to something



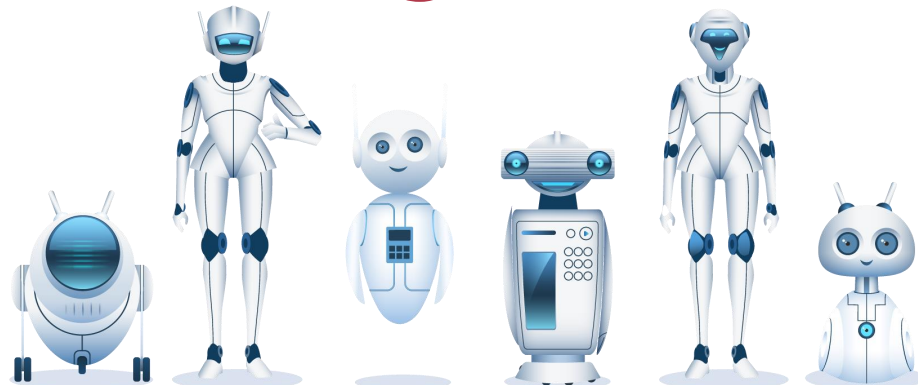
surface (n)

the outer or top part or layer of something.



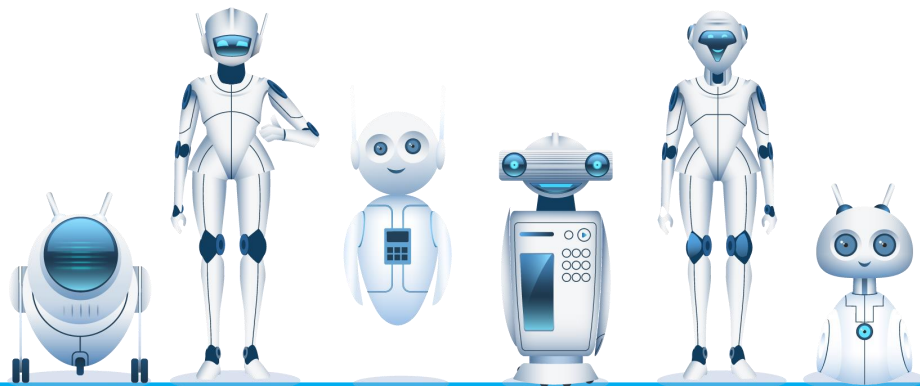
reaction (n)

behavior, a feeling or an action that is a direct result of something else



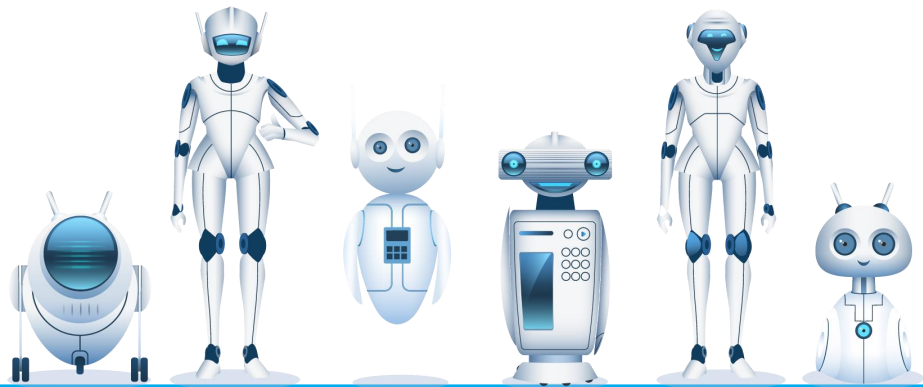
muscles (n)

a mass of tissue in the body,
often attached to bones.



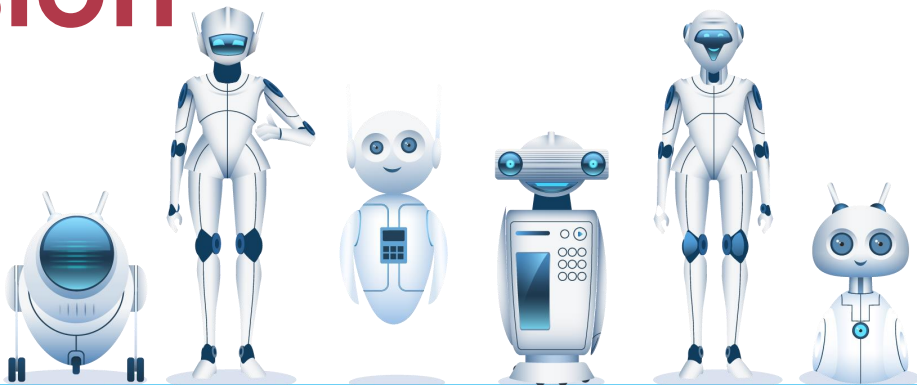
movement (n)

a change of position



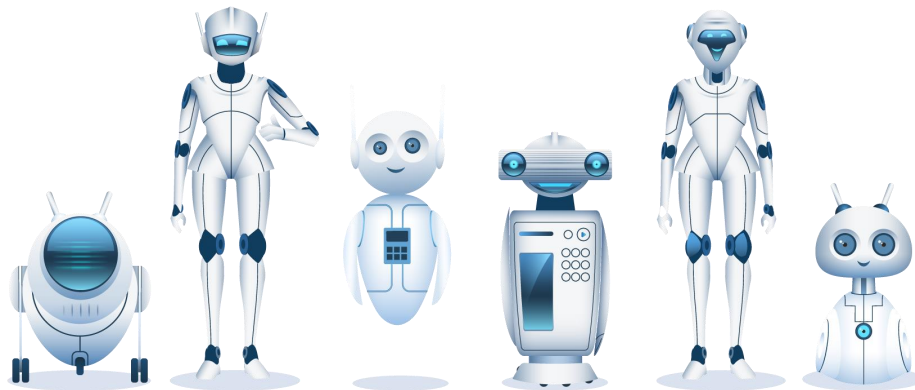
appropriate (adj)

suitable or right for a particular situation or occasion



command (n)

an order, especially one given by a soldier



Vocabulary Practice

Directions: Match the words with its definitions.

manufacturing

automotive

respond

surfaces

reaction

muscles

movement

appropriate

command

1. **muscles** a mass of tissue in the body, often attached to bones
2. **manufacturing** the business of producing goods in large numbers, especially in factories
3. **surfaces** the outer or top part or layer of something
4. **movement** a change of position
5. **automotive** relating to road vehicles
6. **appropriate** suitable or right for a particular situation
7. **respond** to say or do something as a reaction to something
8. **command** an order, especially one given by a soldier
9. **reaction** behavior, a feeling or an action that is a direct result of something else



What are **machines you have
found in your daily life?**



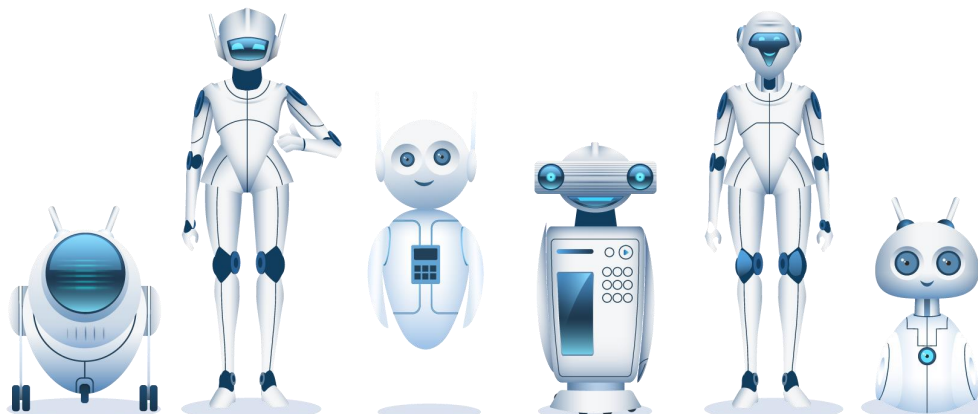
What are the similarities of
robots and humans in your
idea?



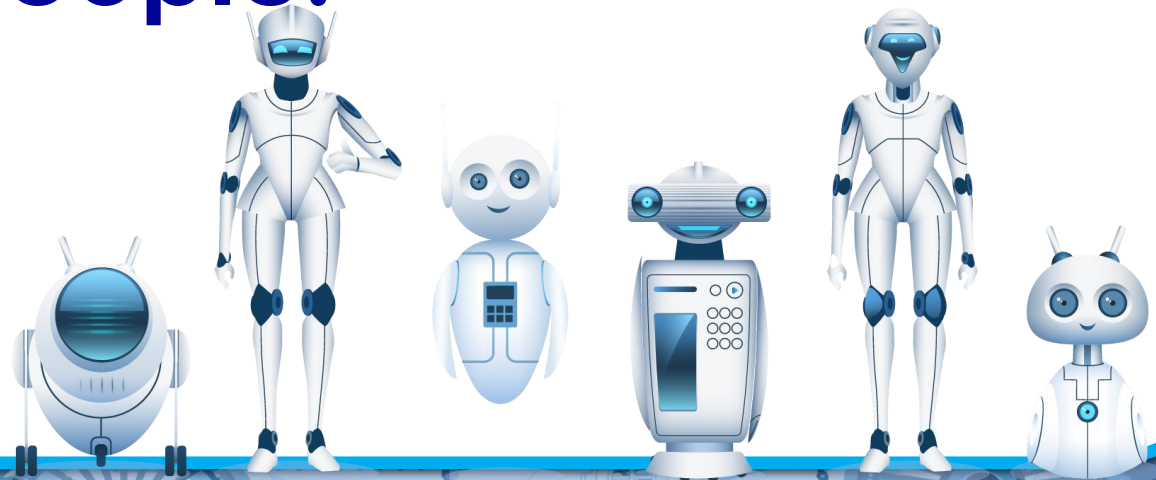
Machines Are Like Us

by Staff Writer

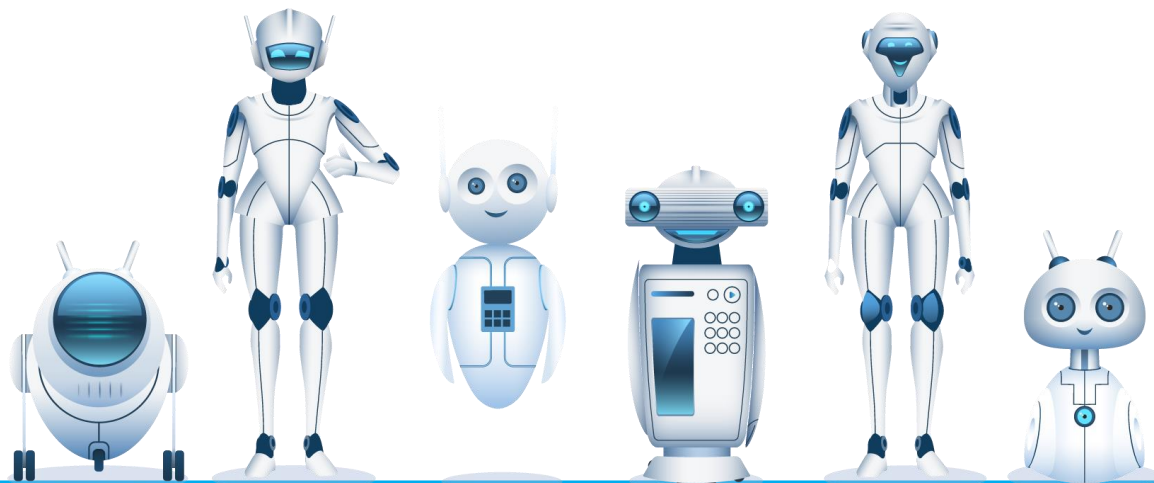
**Robots are important in many fields,
including the manufacturing,
automotive, and medical industries.**



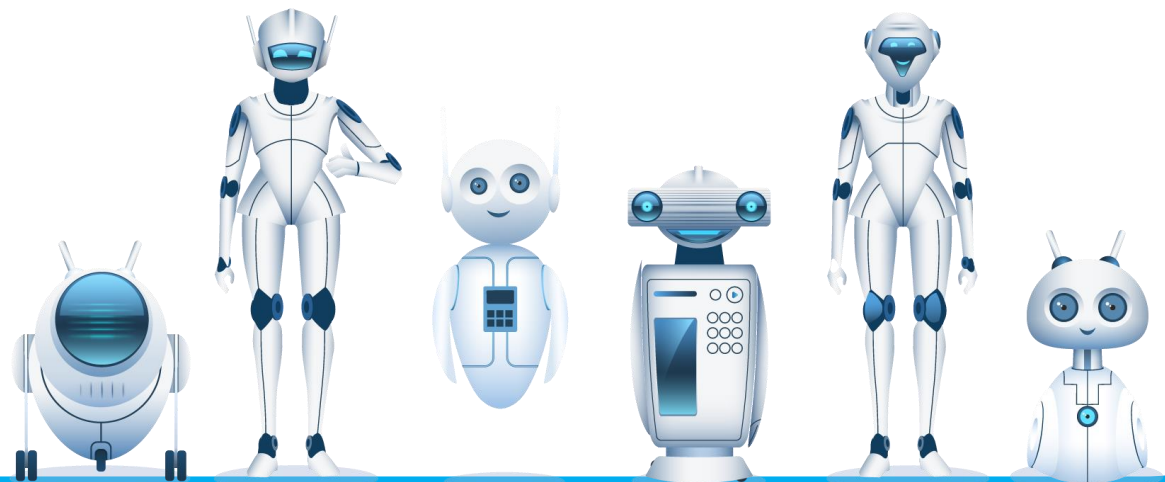
Most robots do not look exactly like humans, but they do share several qualities with people.



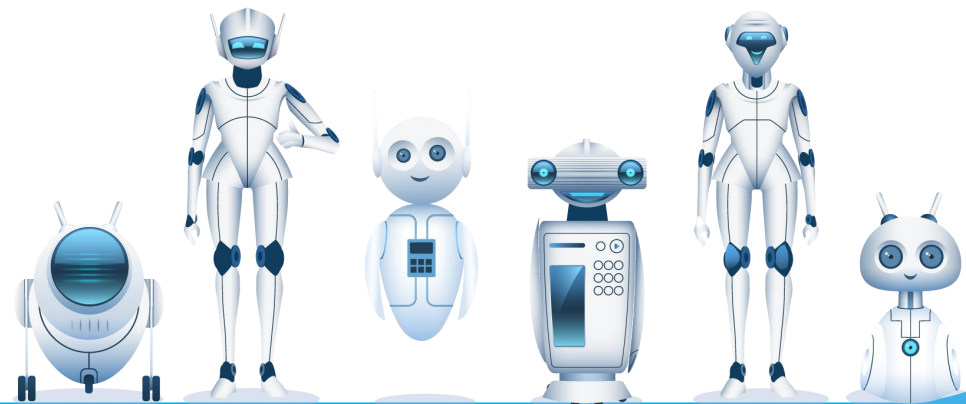
To start, a person may sense the surrounding world using eyes, ears, nose, tongue, and skin that responds to touch.



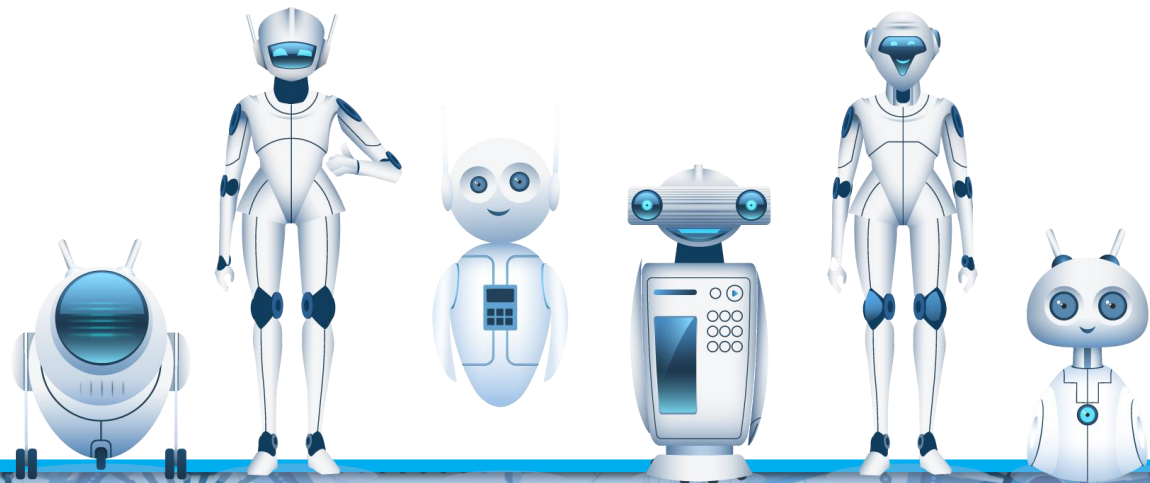
A robot may have sensors that respond to light, sounds, pressure, and chemicals in the air or on surfaces.



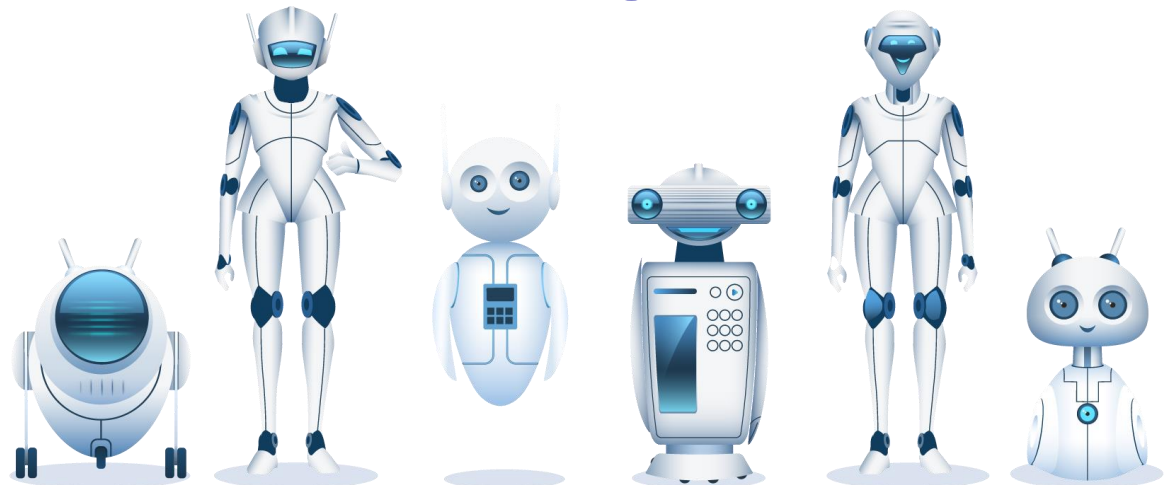
Next, a human has a brain that responds to this sense information and controls reactions.



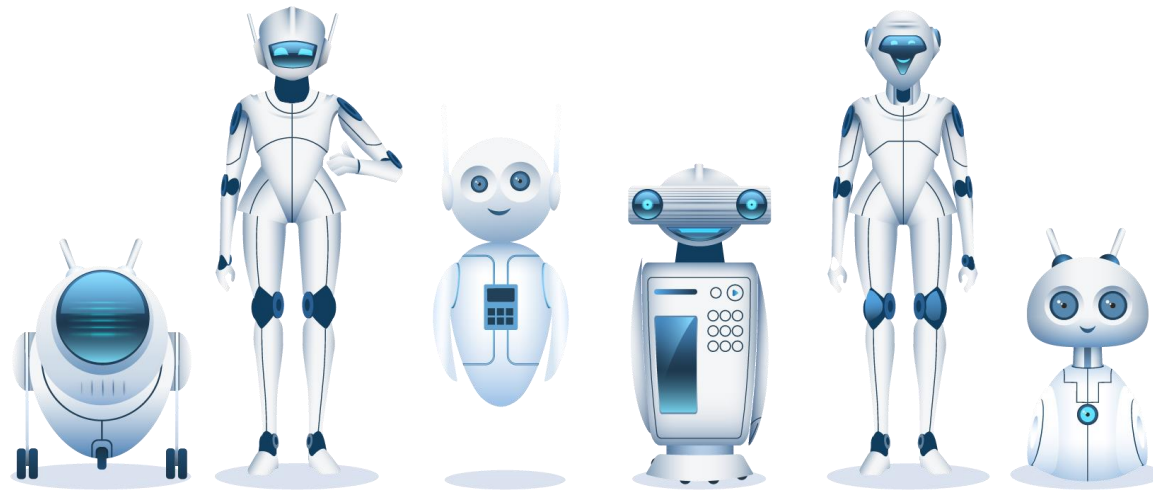
A robot has a control system and programs that are designed to respond to similar information.

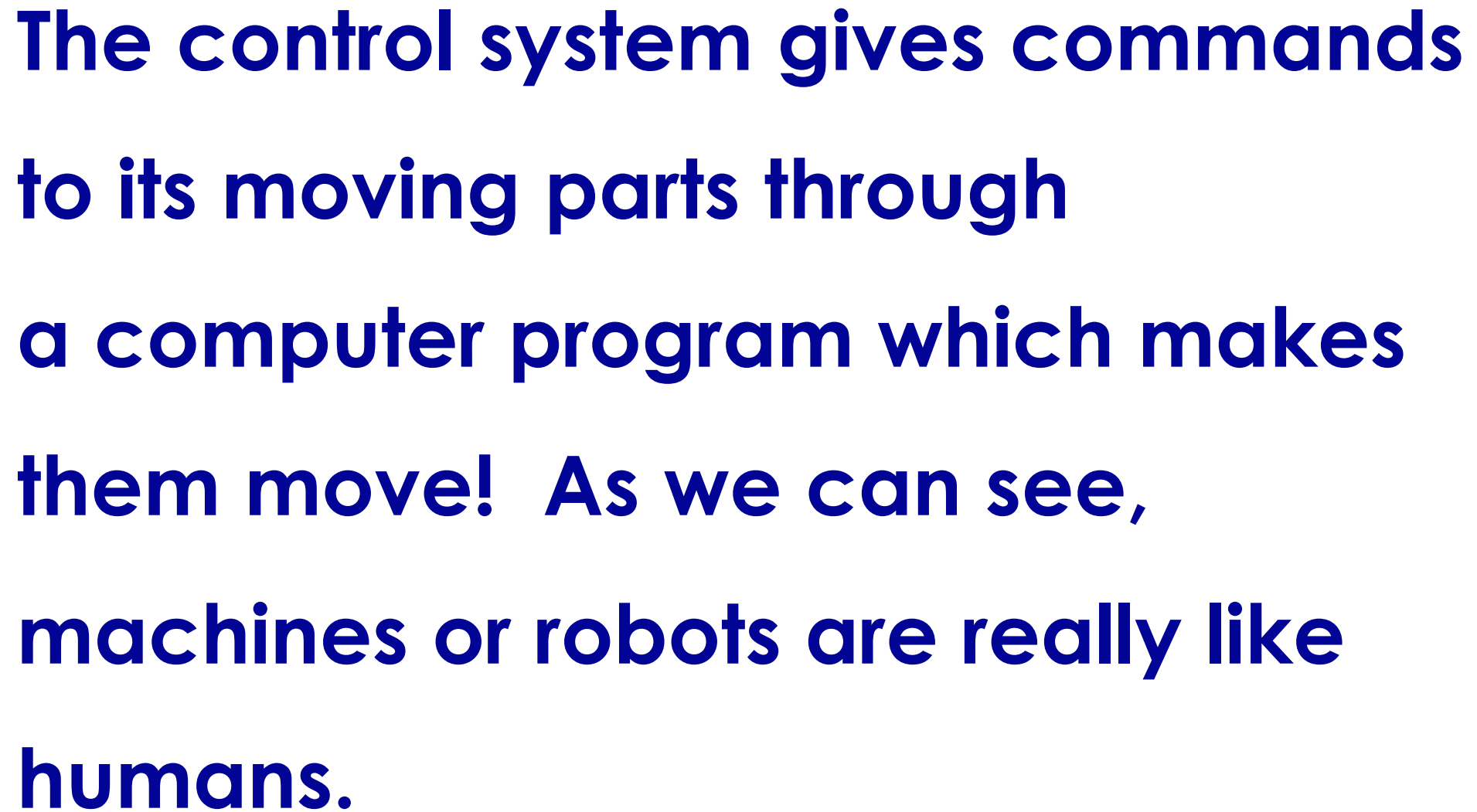


Finally, the human brain gives commands to the muscles using the nervous system that can give them movement.



**A robot's computer "brain" decides
on appropriate reactions for the robot
"body."**



The background of the slide is a dark blue color with a pattern of various mechanical gears, cogs, and parts in a lighter blue shade. The text is centered within a white rounded rectangle that has a blue border.

The control system gives commands to its moving parts through a computer program which makes them move! As we can see, machines or robots are really like humans.

Q & A



Directions: Read the passage and answer the following questions.

Part I: Questions

1. What areas can machines be used with?

They can be used with the areas of the manufacturing, automotive, and medical industries.

2. What do machines use sensors for?

They use the sensors for responding to light, sounds, pressure, and chemicals in the air or on surfaces.

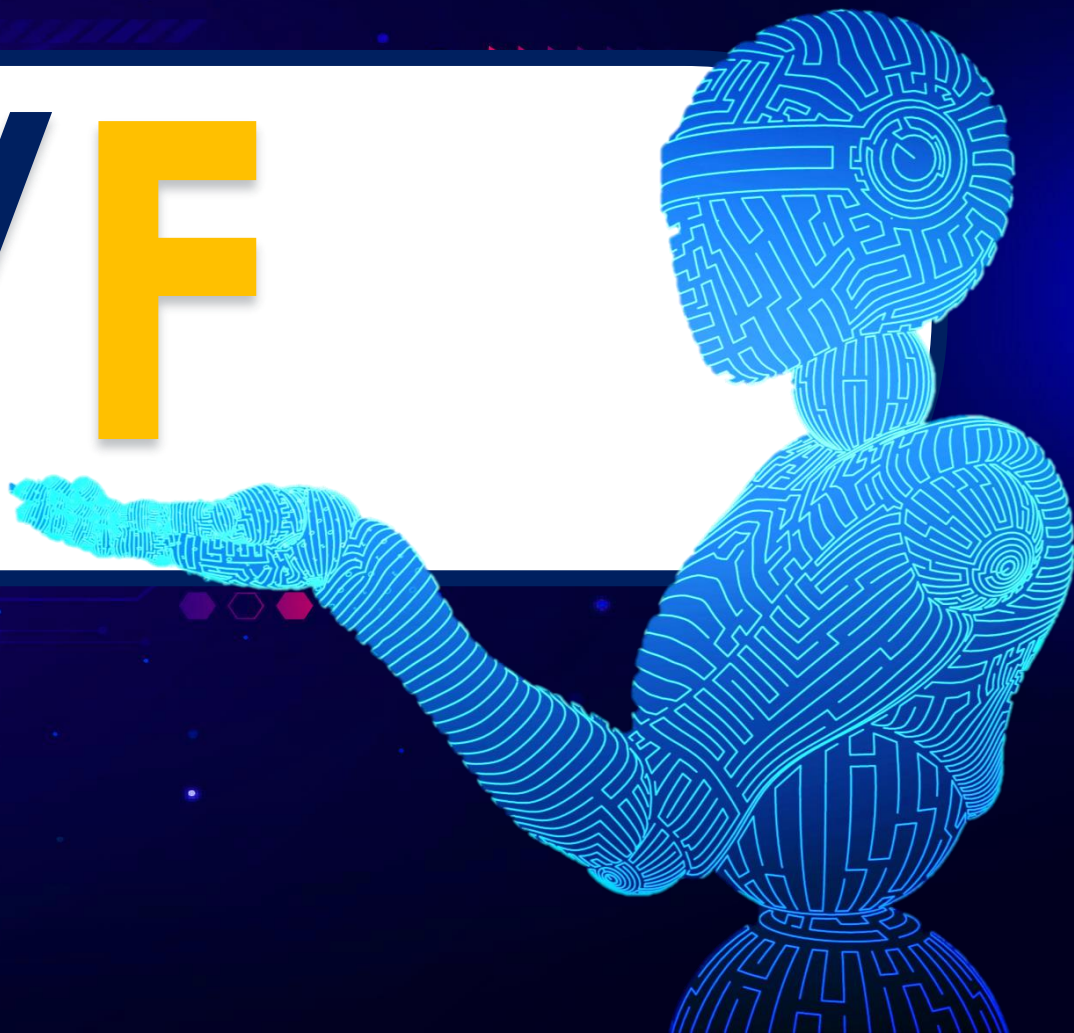
3. What gives humans movement?

The human brain gives commands to the muscles using the nervous system that can give them movement.

4. How many similarities of machines and humans are there in the passage?

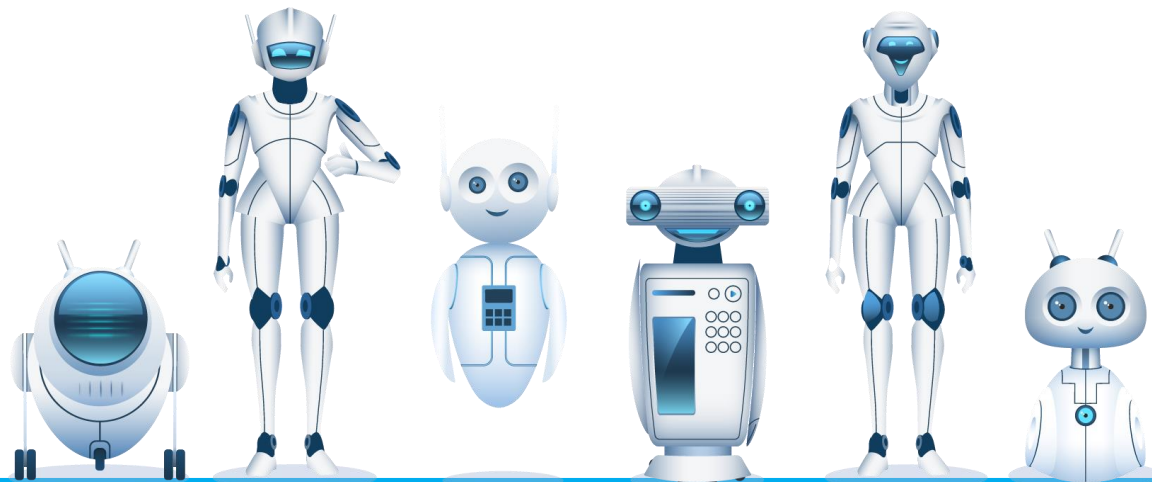
There are three similarities.

T / F



Directions: Decide if these statements are true or false based on the passage.

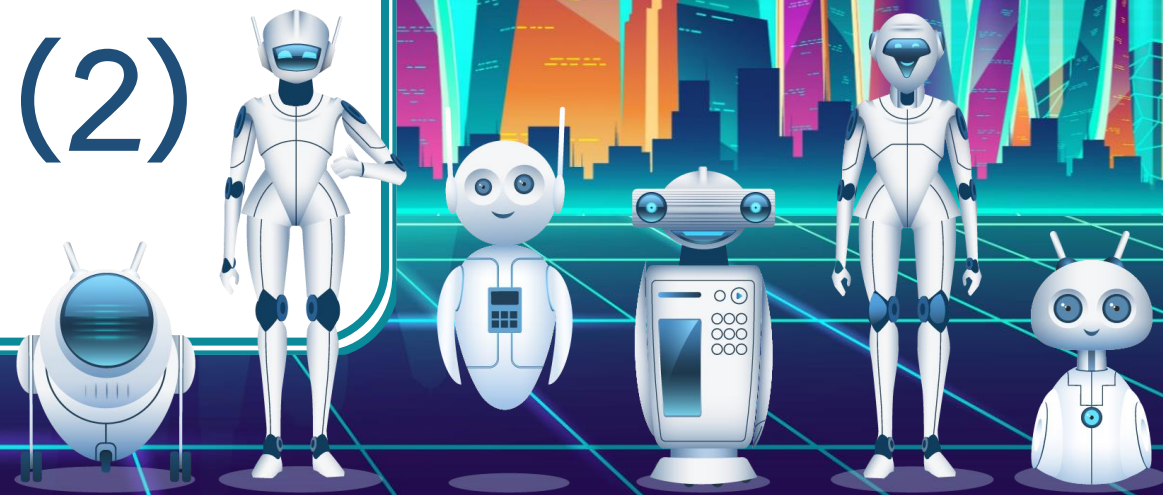
1. T Robots are essential in a lot of ways.
2. T People use organs to touch their surrounding world.
3. F The human brain gives commands to the machines.
4. F There is not a control system in machines.



บทเรียนครั้งต่อไป

เรื่อง

Future Is Here (2)



สิ่งที่ต้องเตรียม ใบงานเรื่อง

Future Is Here (2)

สามารถดาวน์โหลดได้ที่ www.dltv.ac.th

