

รายวิชา ภาษาอังกฤษ

รหัสวิชา อ22101

ชั้นมัธยมศึกษาปีที่ 2

Asking for and Giving Directions (2)

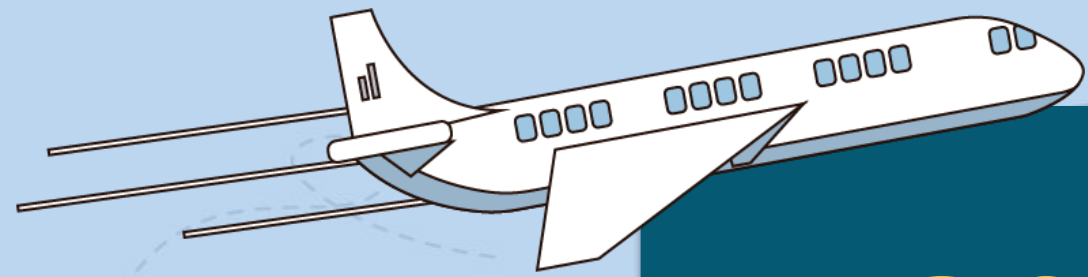
ครูผู้สอน ครูวัลลภ ใจหมั่น

ครูพรทิพย์ พงษ์ทอง



Asking for and Giving Directions (2)

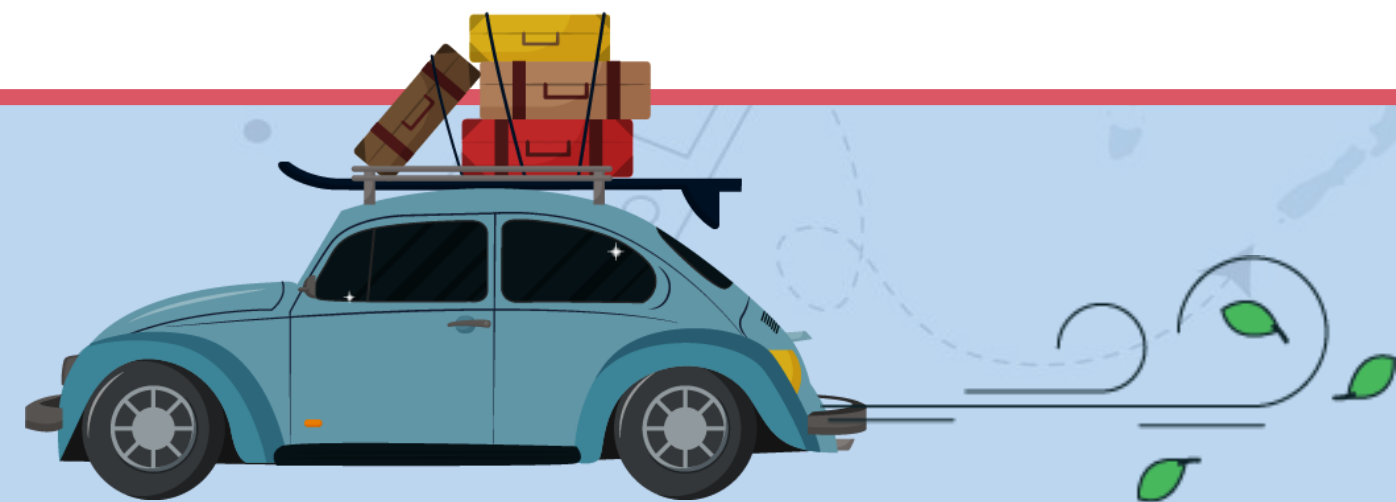




จุดประสงค์การเรียนรู้



1. ออกเสียงคำศัพท์ เกี่ยวกับการขอและให้ข้อมูลเกี่ยวกับตำแหน่งและทิศทางของสถานที่ต่าง ๆ ได้
2. พูดสนทนา แล้วให้ข้อมูลเกี่ยวกับเส้นทางไปสถานที่ต่าง ๆ ได้



Asking for and giving directions

1. newsagent
2. petrol station
3. chemist's
4. barber
5. florist's
6. playground

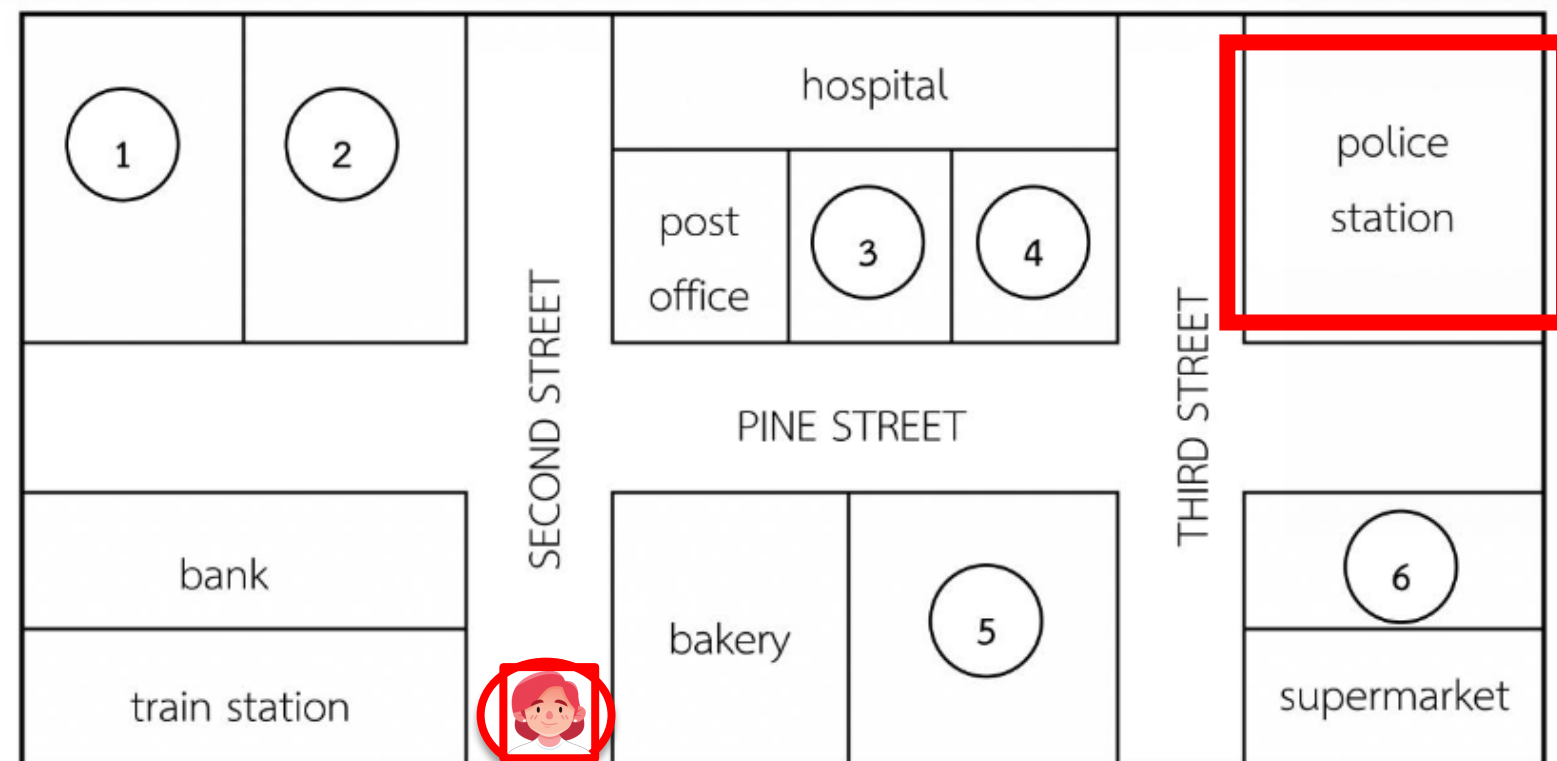


Q: How can I get to the police station ?



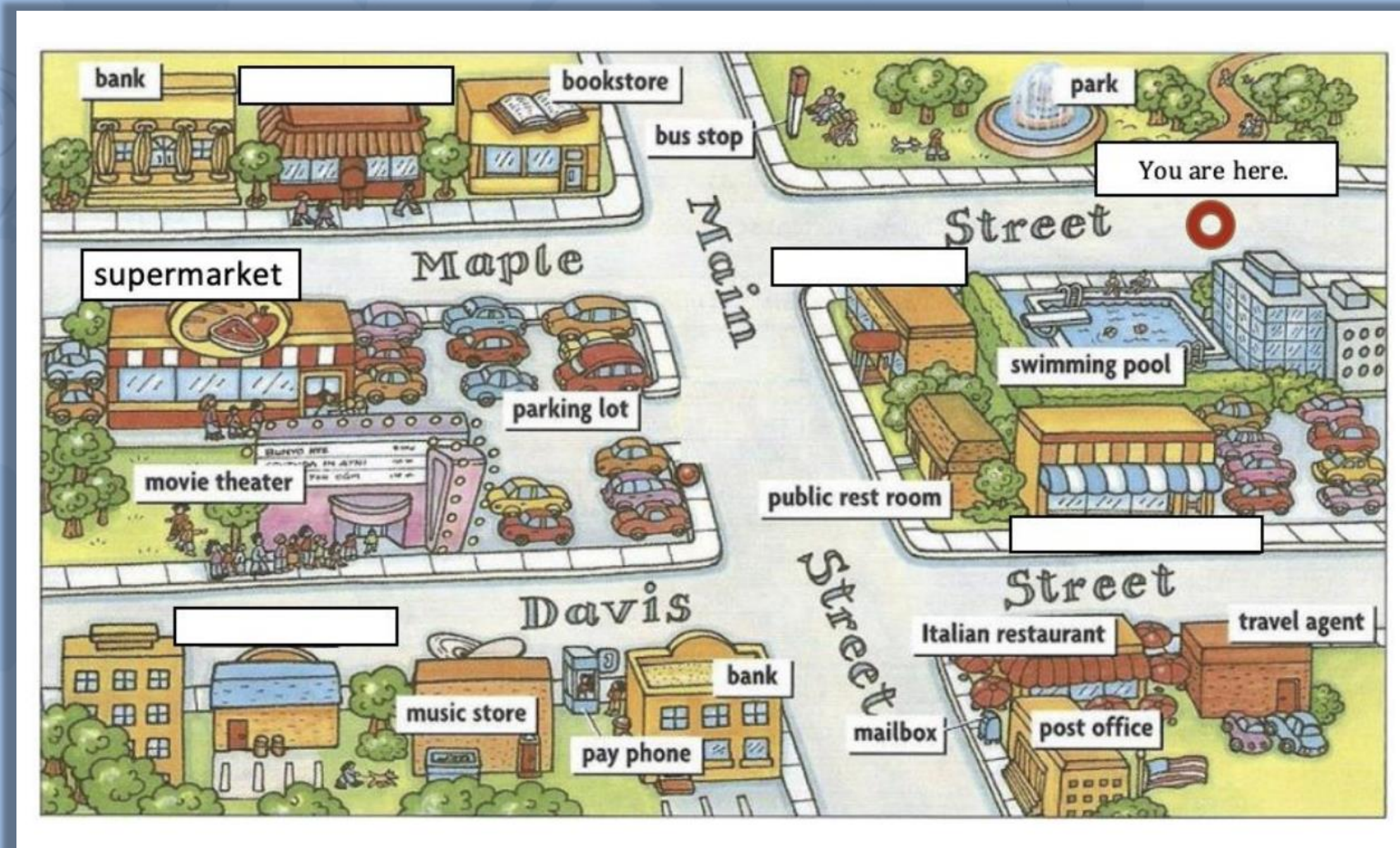
A: Go straight on Second Street. Turn right at the first corner. Go past the post office, chemist's and barber on Pine Street.

The police station is on your left, across from the playground.

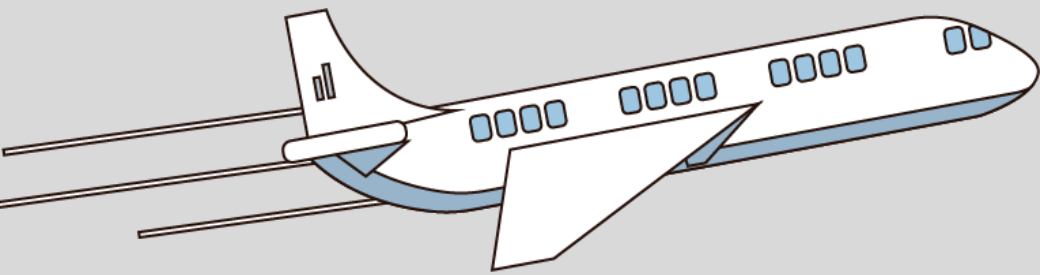


Where is ...?

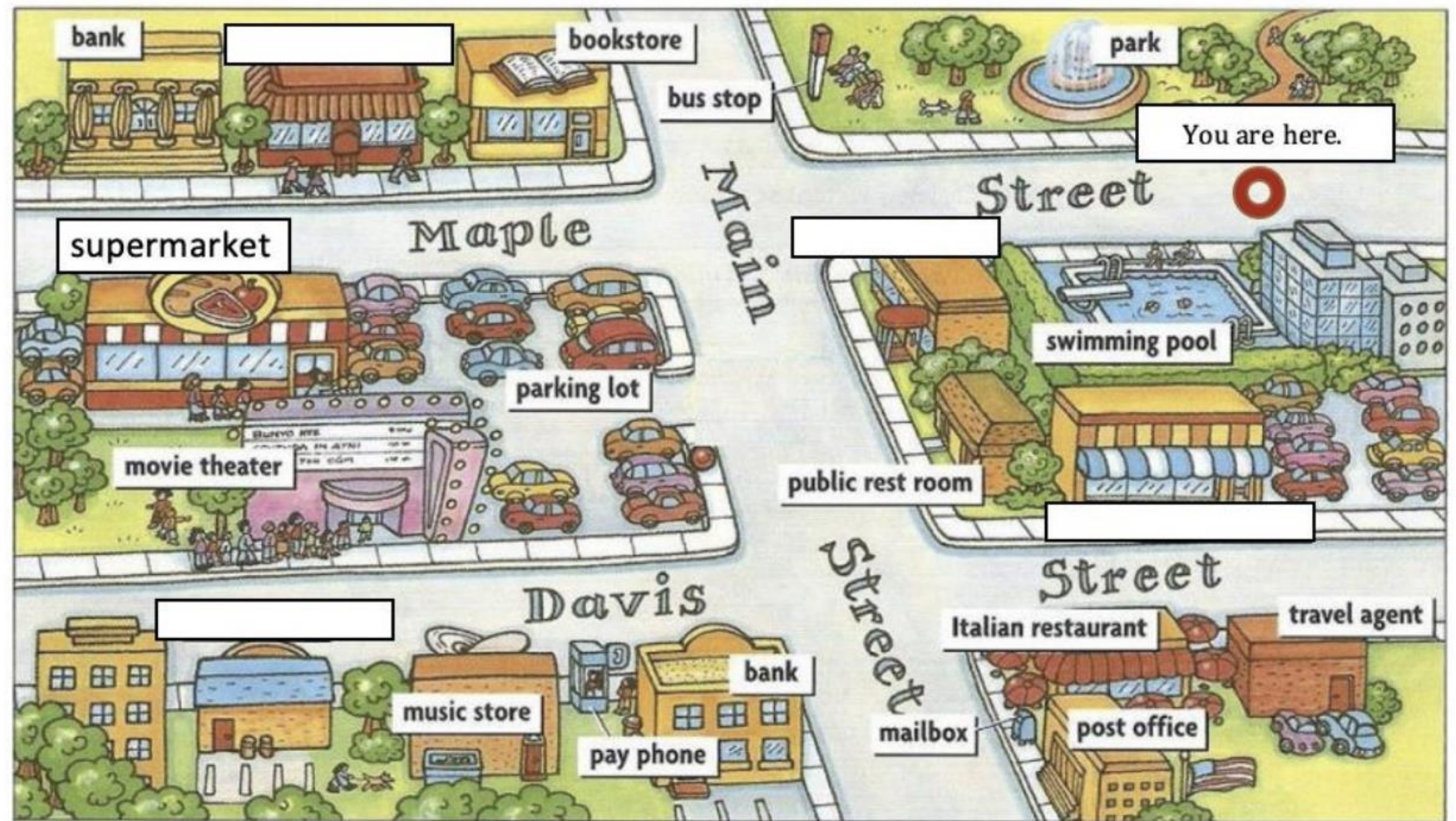
Worksheet



Directions: Talk to your partner. Draw a line to the place you want to go.



Worksheet: Where is ...?



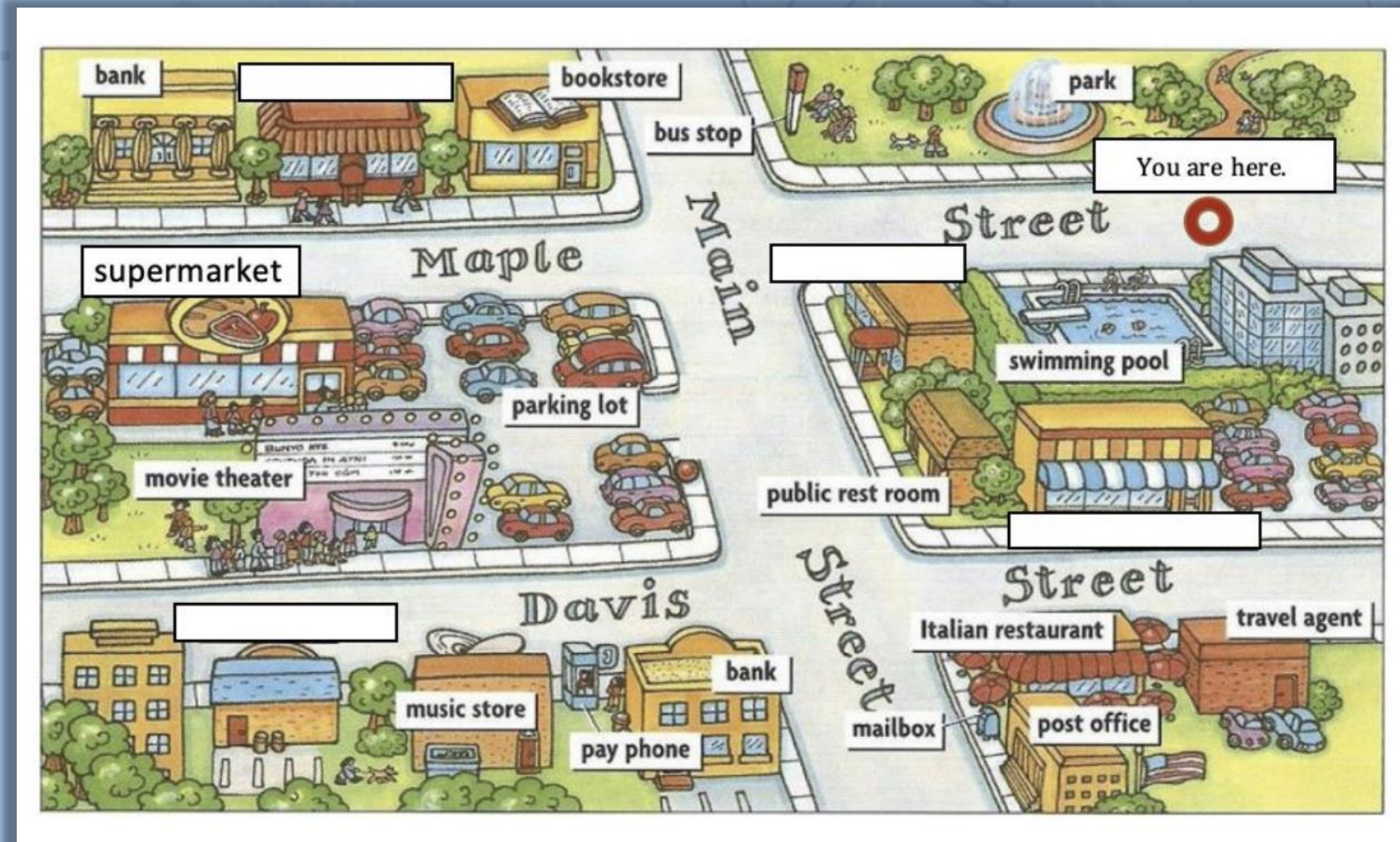
Worksheet

Where is ...?



Student A

Directions: Talk to your partner. Draw a line to the place you want to go.



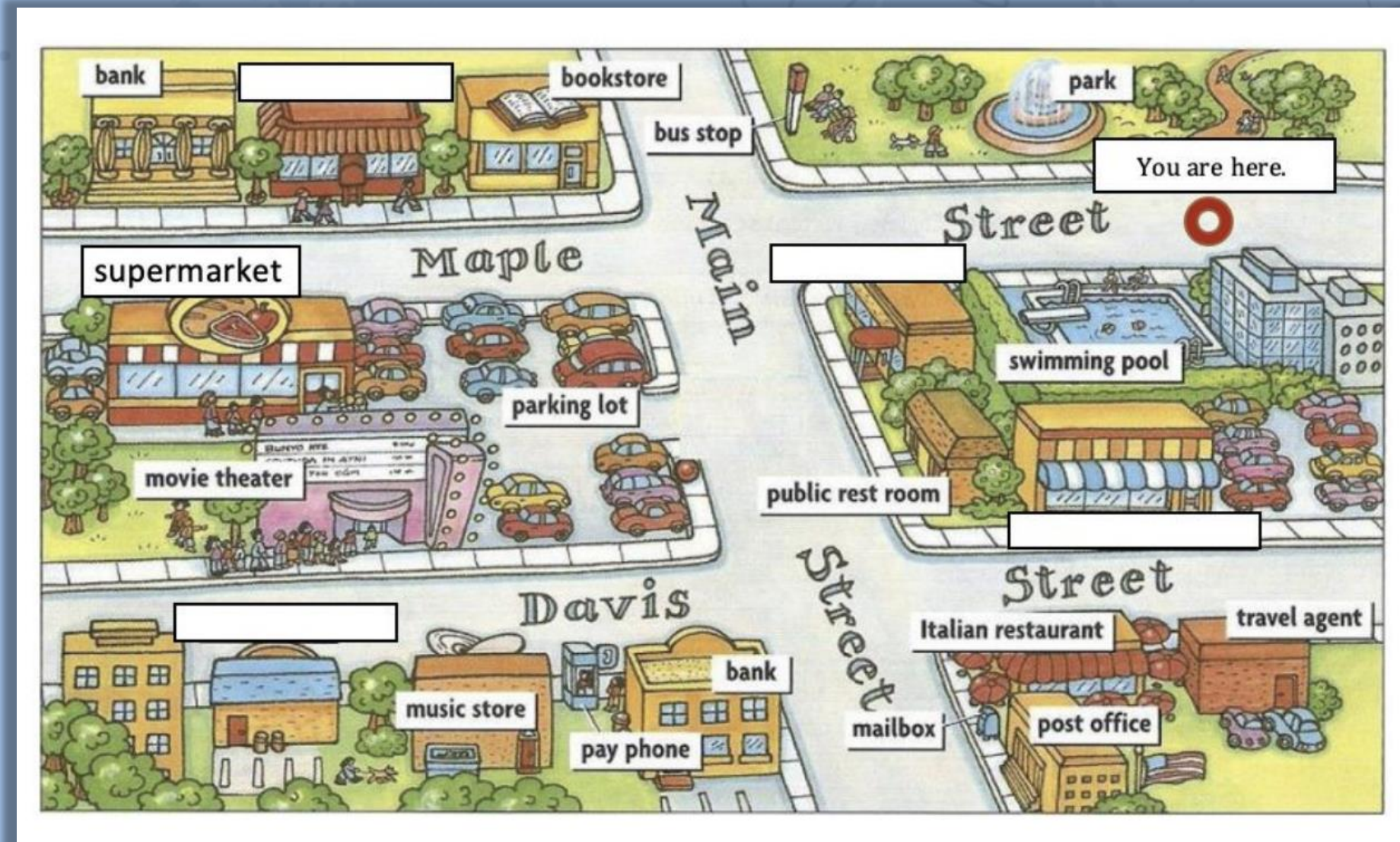
Worksheet

Where is ...?



Student B

Directions: Talk to your partner. Draw a line to the place you want to go.



Worksheet

Where is ...?



Student A

Situation: *You want to go to a newsagent's, but you don't know where it is. You ask a passerby how to get there.*

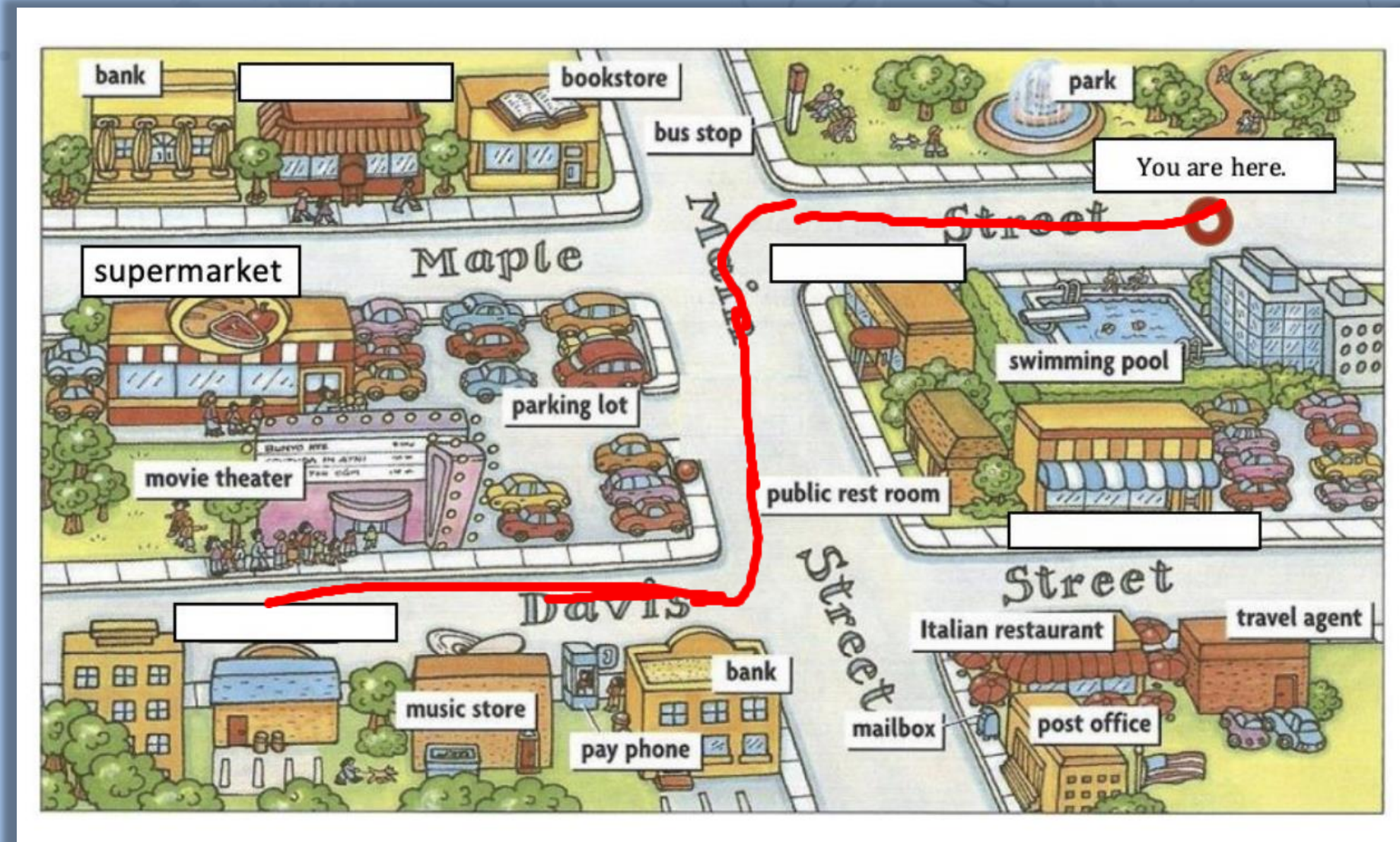
Worksheet

Where is ...?



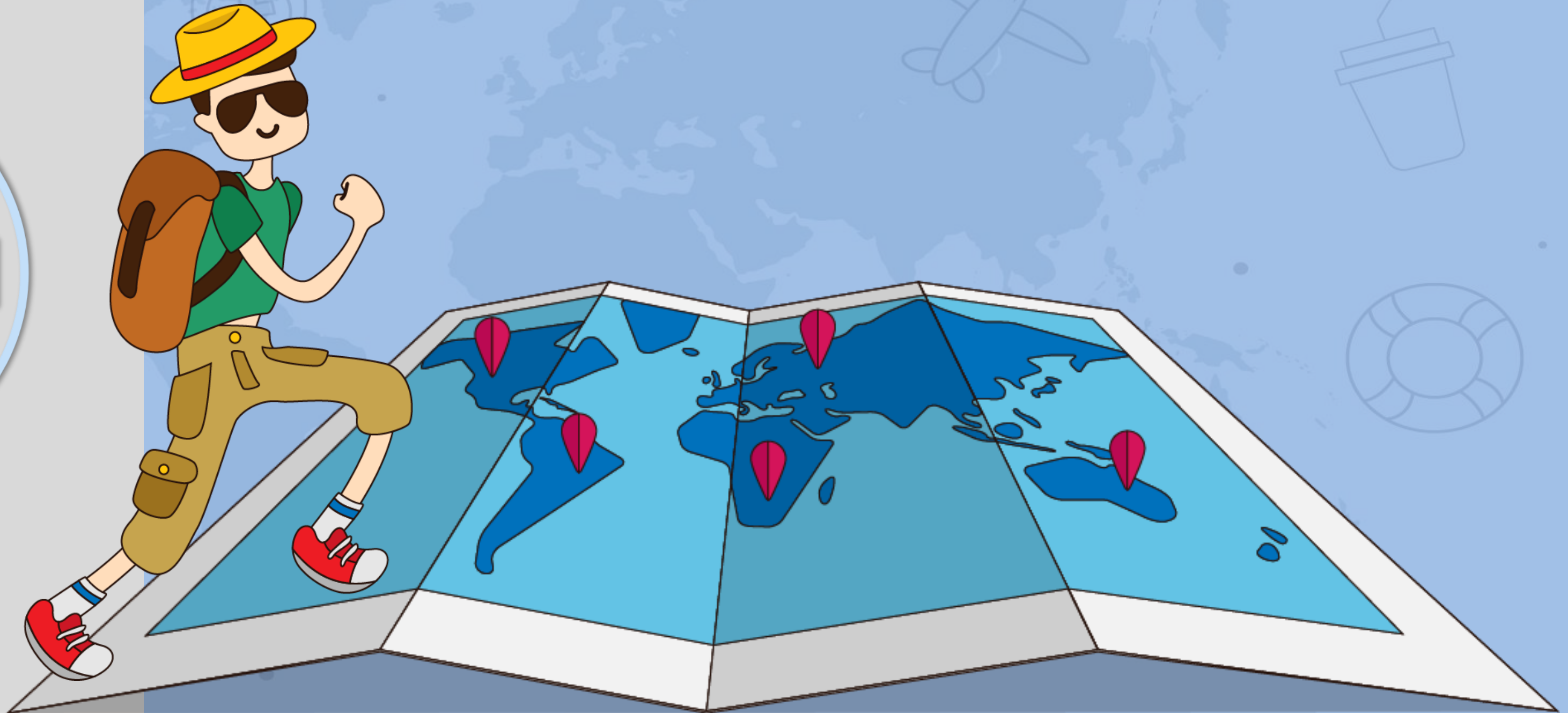
Student A

Directions: Talk to your partner. Draw a line to the place you want to go.



Worksheet

Where is ...?



Take turns!

Worksheet

Where is ...?



Student B

Situation: *You want to go to **the travel agent**, but you don't know where it is. You ask a passerby how to get there.*

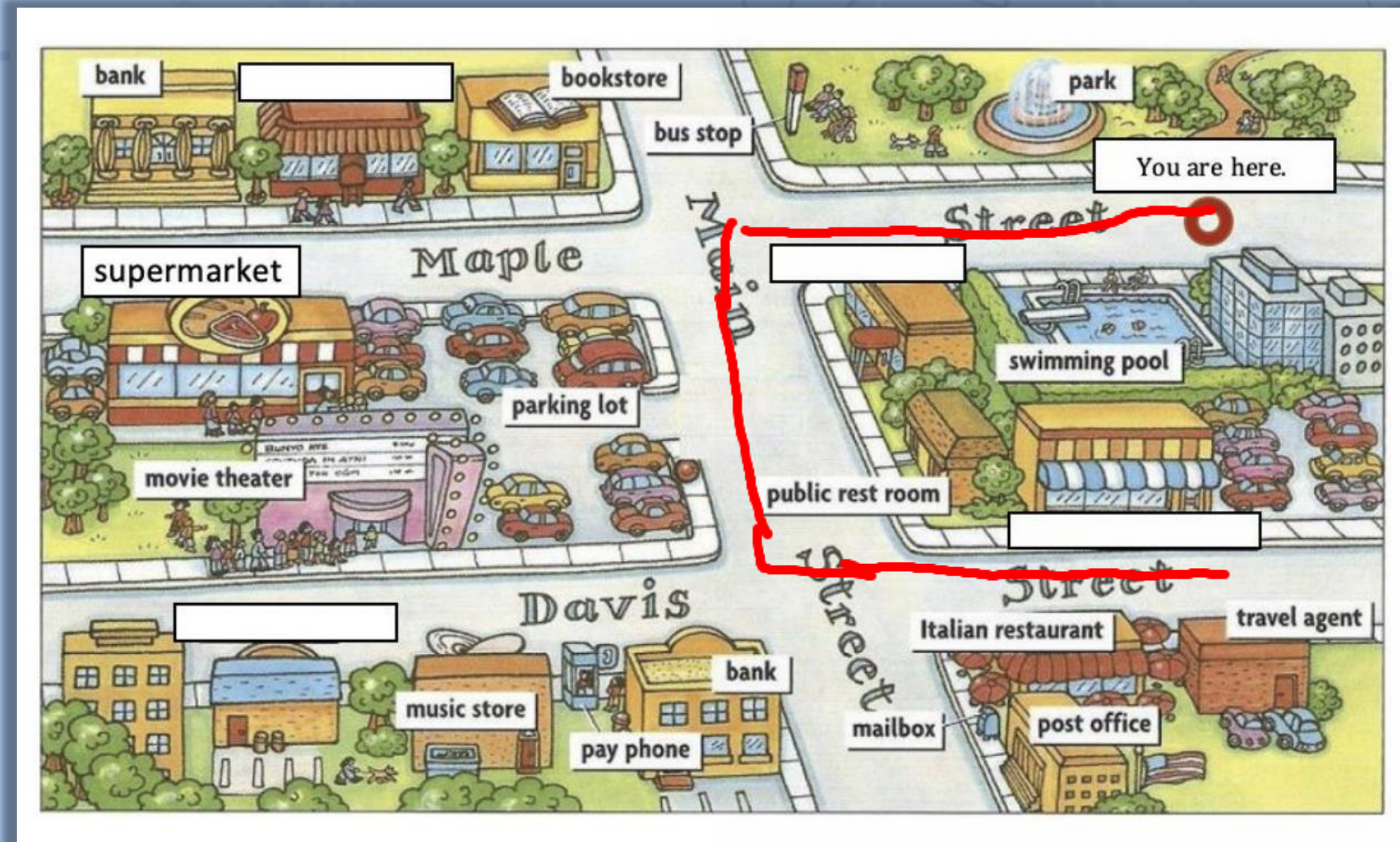
Worksheet

Where is ...?



Student B

Directions: Talk to your partner. Draw a line to the place you want to go.



Worksheet

Where is ...?



Student A

Directions: Talk to your partner. Draw a line to the place you want to go.



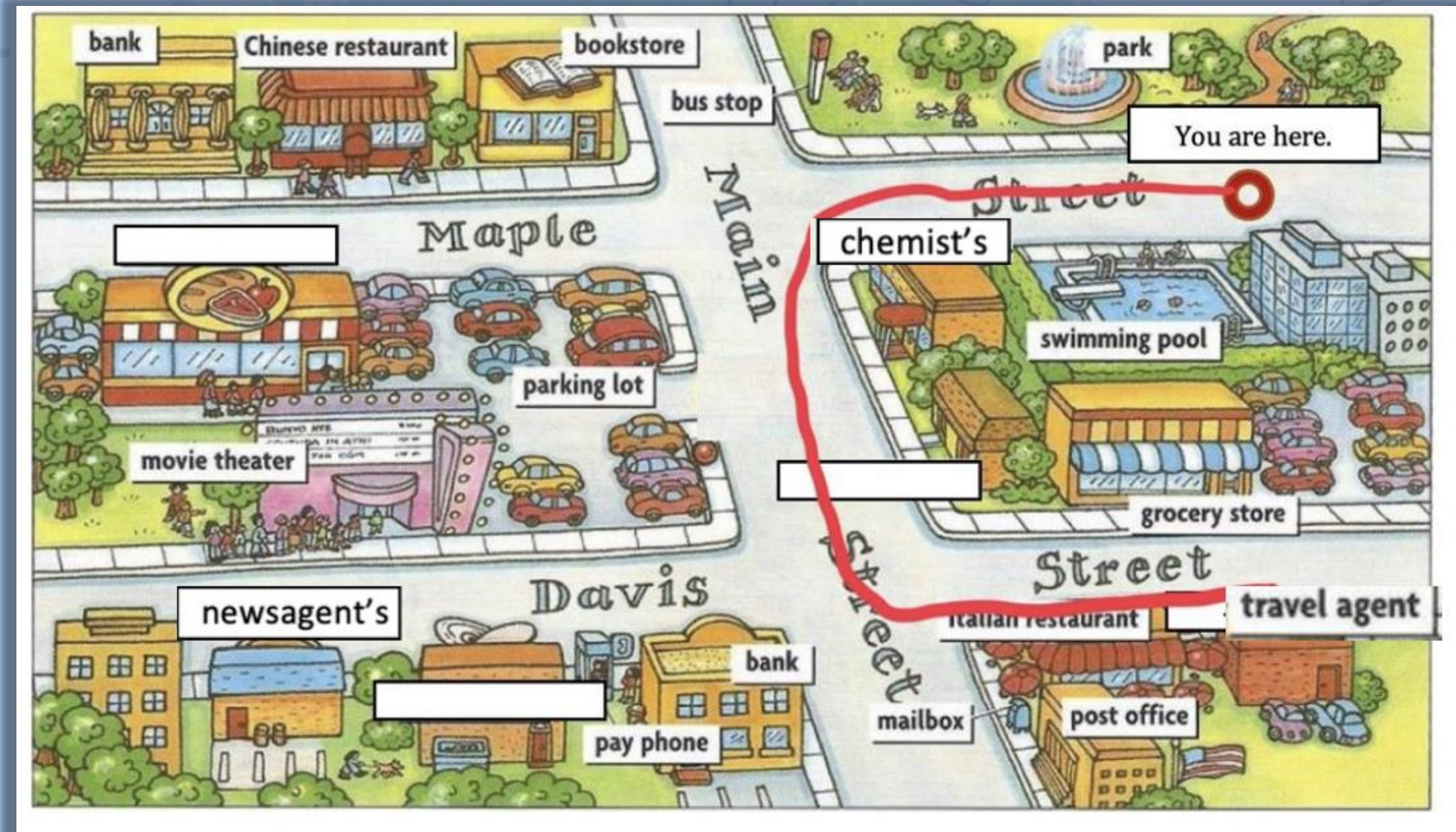
Worksheet

Where is ...?



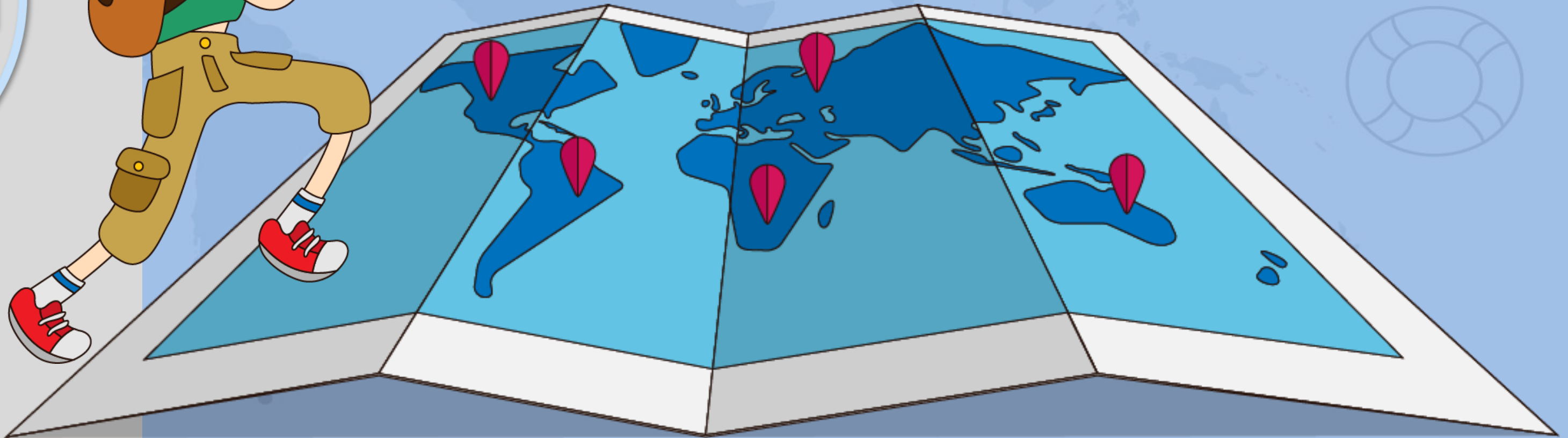
Student B

Directions: Talk to your partner. Draw a line to the place you want to go.



Worksheet

How Do I Get to ...?



Worksheet

How Do I Get to ...?

Directions: Draw a map to your house from school. Write the directions.



A Map to My House

How to get to my house:

Worksheet

How Do I Get to ...?

Directions: Talk to your partner and ask for directions from school to their house.
Draw a map to your partner's house from school.



A Map to _____'s House

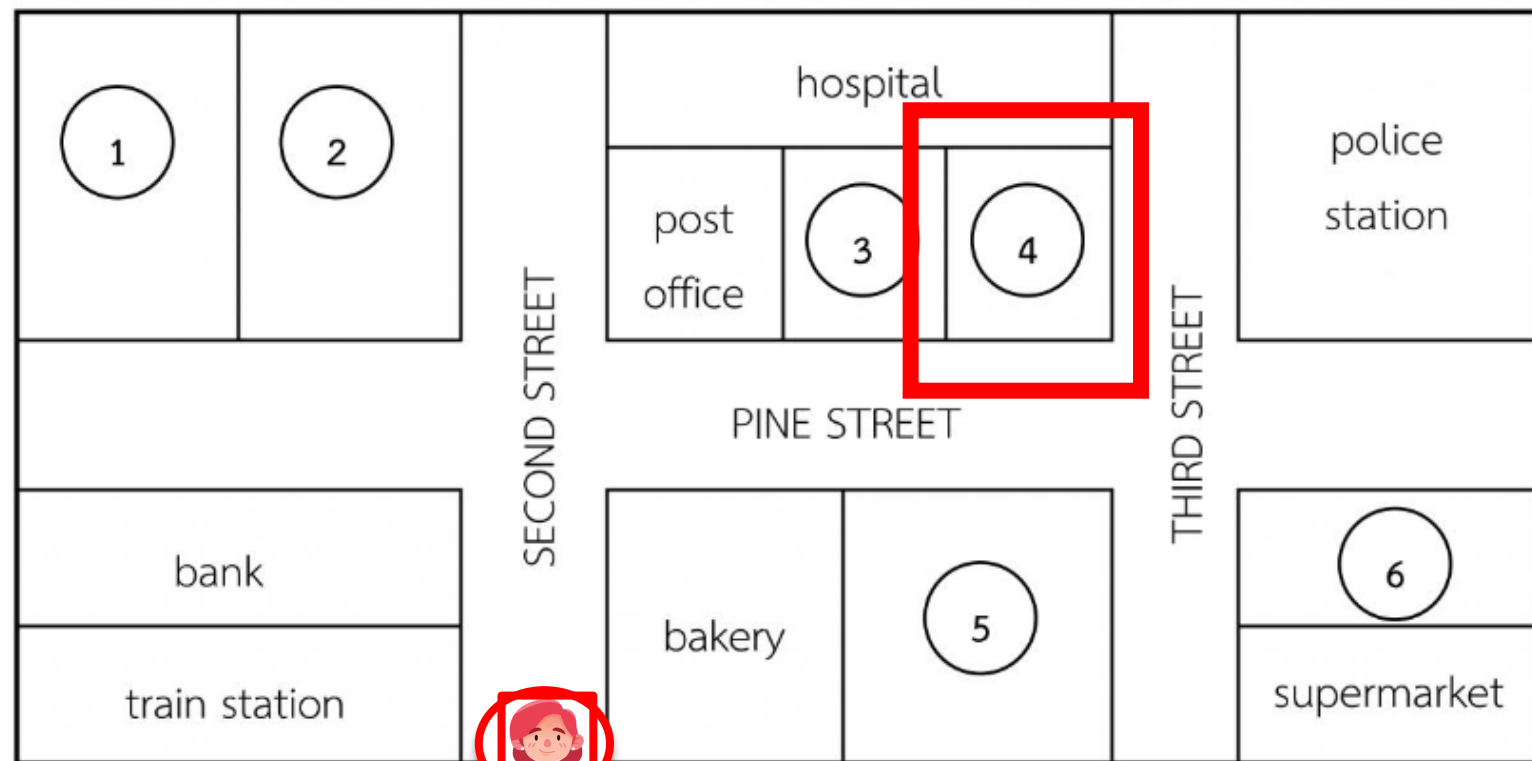
(add your friend's name here)

Asking for and giving directions

1. newsagent
2. petrol station
3. chemist's
4. barber
5. florist's
6. playground

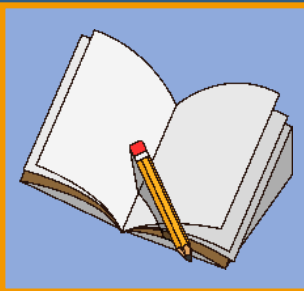


Q: How can I get to the barber ?



A: **Go straight** on Second Street. **Turn right** at the first corner. **Go past** the post office and chemist's on Pine Street. **The barber** is on your left, **across from the florist's**.





บทเรียนครั้งต่อไป

เรื่อง **My Ideal Town (1)**



สิ่งที่ต้องเตรียม

1. ใบความรู้ที่ 1 My Ideal Town
2. ใบงานที่ 1 My Ideal Town



(สามารถดาวน์โหลดได้ที่ www.dltv.ac.th)

